

Wendy L. Caron
3661 Charlevoix Avenue
Windsor, Ontario, Canada N9E 3B4
(519) 966-5254 / caronwendyl@sympatico.ca

May 1, 2010

Corinne MacDonald
CORS Secretary
Department of Industrial Engineering
Dalhousie University
Halifax, NS B3J 2X4

Dear Corinne,

**RE: Canadian Operational Research Society
Annual Membership Report 2009-2010**

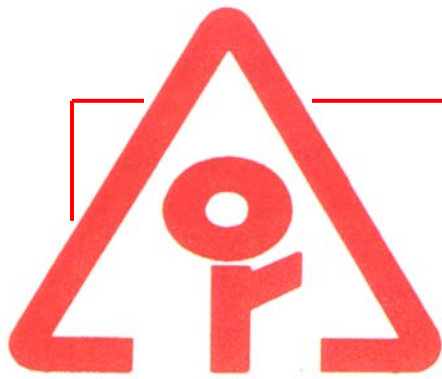
I am pleased to submit for the consideration of CORS Council a copy of the 2009-2010 Annual Membership Report for the Canadian Operational Research Society which documents the membership activity experienced by the Society over the past year. The report provides Council with the information it needs to assess the health and well-being of the Society; to monitor the effectiveness of membership processes and practices; and to identify areas where policy initiatives or changes may be required.

This report reveals that membership in CORS is at its lowest level in five years and that over the past two years more people have left the Society than joined. If the Canadian Operational Research Society is to continue to remain vital and to fulfil its mandate of promoting and safeguarding the existence of an OR community in Canada, this trend must be reversed. Suggested initiatives in this regard are provided in the Executive Summary. Additionally, the CORS Membership Survey undertaken in February – March 2010 provides some insight into the means to accomplish membership retention and I encourage CORS Council to act upon the Future Directions set out in the report summarizing the survey's findings.

Yours truly,



Wendy L. Caron
CORS Membership Services



CORS-SCRO

Annual Membership Report

2009-2010

**Canadian Operational
Research Society**

**Société Canadienne
de Recherche
Opérationnelle**

**Prepared by
Wendy L. Caron
CORS Membership Services
3661 Charlevoix Avenue
Windsor, Ontario, Canada N9E 3B4
(519) 966-5254 / caronwendyl@sympatico.ca**

	<i>Page</i>
Part 1: Introduction and Executive Summary	1
Part 2: Overview of Membership	5
Overall	5
Membership by Member Type	5
Membership by Section	7
Membership by Section and Member Type	11
Duration of Membership	13
Part 3: New Memberships	16
Overall	16
New Memberships by Member Type	16
New Memberships by Section	17
New Memberships by Section and Member Type	19
Related Miscellaneous Observations	21
Part 4: Discontinued Memberships	22
Overall	22
Discontinued Memberships by Member Type	22
Discontinued Memberships by Section	23
Discontinued Memberships by Section and Member Type	23
Duration of Cancelled CORS Memberships	23
Part 5: Payment Status of Membership	26
Overall	26
Method of Payment	26
Part 6: Membership Statistics by Section	29
Atlantic Section	29
Calgary Section	31
Edmonton Section	33
International Section	35
Kingston Section	37
Montreal Section	39
Ottawa and Ottawa Student Sections	41
Quebec Section	43
Saskatoon	45
SW Ontario (including Waterloo Student) Section	47
Toronto and Toronto Student Sections	49
Vancouver and Vancouver Student Sections	51
Winnipeg Section	53

List of Tables

Table 1: CORS Membership 1998-2010	5
Table 2: CORS Membership by Member Type 2001-2010	6
Table 3: Percentage Distribution of CORS Membership by Member Type 2001-2010	7
Table 4: CORS Membership by Section 2001-2010	7

Table of Contents

Table 5: CORS Membership by Section and Member Type March 31, 2010	11
Table 6: Percentage Distribution of CORS Membership by Section and Member Type, March 31, 2010	11
Table 7: CORS Membership by Duration of Membership in the Society as of March 31, 2010	13
Table 8: New CORS Memberships 1998-2010	16
Table 9: New CORS Memberships by Member Type 2002-2010	17
Table 10: New CORS Memberships by Section 2002-2010	17
Table 11: New CORS Memberships in the 2009-2010 Membership Year By Section and Member Type	21
Table 12: Requests for a Paper Copy of the CORS-SCRO Bulletin by New CORS Members	21
Table 13: Discontinued CORS Memberships 2002-2010	22
Table 14: Discontinued CORS Memberships by Member Type 2004-2010	22
Table 15: Discontinued CORS Memberships by Section 2002-2010	23
Table 16: Discontinued CORS Memberships in the 2009-2010 Membership Year By Section and Member Type	24
Table 17: Duration of Memberships Cancelled in 2009-2010 Membership Year	24
Table 18: Payment Status of CORS Membership by Section March 31, 2010	26
Table 19: Method of Payment of Transactions Conducted in the 2009-2010 Membership Year	28

List of Graphs

Graph 1: CORS Membership 1998-2010	6
Graph 2: CORS Membership by Member Type 201-2010	8
Graph 3: Percentage Distribution of CORS Membership by Section March 31, 2010	9
Graph 4: CORS Membership by Section 2001-2010	10
Graph 5: CORS Membership by Section and Member Type March 31, 2010	12
Graph 6: Percentage Distribution of CORS Membership by Duration of Membership in the Society as of March 31, 2010	14
Graph 7: Comparison of CORS Memberships by Duration of Membership 2006, 2007, 2008, 2009 and 2010	15
Graph 8: New CORS Memberships by Member Type 2001-2010	18
Graph 9: Percentage Distribution of New CORS Memberships by Section for the 2009-2010 Membership Year	19
Graph 10: New CORS Memberships in the 2009-2010 Membership Year by Section and Member Type	20
Graph 11: Discontinued CORS Memberships in the 2009-2010 Membership Year by Section and Member Type	25
Graph 12: Payment Status of CORS Membership by Section as of March 31, 2010	27

Part 1: Introduction and Executive Summary

This report documents the membership activity experienced by the Canadian Operational Research Society over the past year and provides Council with the information it needs to assess the health and well-being of the Society; to monitor the effectiveness of its membership processes and practices; and to identify areas where policy initiatives or changes may be required. It also presents information on other membership related matters falling within the purview of the Membership Services provider.

The report is organized into six parts as follows:

Part 1 is this Introduction and Executive Summary.

Part 2 provides an overview of the CORS membership including information and graphs on its distribution by member type and section.

Part 3 examines new membership activity experienced by the Society over the past year.

Part 4 details memberships discontinued by the Society.

Part 5 reviews the payment status of the membership at the commencement of the 2010-2011 membership year. Information pertaining to method of payment and method of contact is also presented.

Part 6 provides a comprehensive snapshot of the membership within each local section of CORS. For ease of reporting and to present a consistent representation of sections, Student sections have been combined with their associated area section.

It should be noted that the information presented in this report has been compiled on the basis of the CORS' membership year, April 1 – March 31 of the next year, and not the calendar year. Also, a close examination of the figures in Parts II, III, and IV may reveal some apparent inaccuracies in the net gain and/or loss of memberships in some sections. This is accounted for by reinstated memberships, members changing membership categories, and members transferring from one section to another. The margin of error is not, however, considered significant enough to discount or invalidate the analysis of the figures.

- At the end of the 2009-2010 membership year (March 31, 2010), total membership in the Canadian Operational Research Society was 419 of which 289 or 69% were Members, 17 or 4% Retired Members, 106 or 25% Student Members, and 7 or 2% Emeritus Members.
- For the second year in a row, more people left the Society than joined with CORS experiencing a decrease in total membership of 25. Membership is at its lowest level in five years.
- Eighty-eight per cent (88%) of the decrease in overall membership is attributed to the decrease in the number of Student members in the Society which declined by 22 over the previous year.
- The Toronto Section constitutes the largest section in the Society with 97 members or 23% of total membership. The next largest sections are Montreal and SW Ontario both with 51 members or 12% of the membership.
- The only three sections not experiencing a decrease in membership were Vancouver, Toronto, and Kingston. Calgary's numbers remain unchanged from last year and have been stable the past three years, albeit at their lowest level in the past ten years. The Atlantic section lost 2 members bringing its total membership to 28, the section's lowest level ever.
- The section with the most CORS Members is Toronto with 59 or 20% of the Members in the Society. Montreal and SW Ontario are the next largest sections in terms of Members each with 34 or 12%.
- While Toronto has the most Members, the total number remains unchanged from last year. The sections with the biggest gain in Members were Edmonton (4), SW Ontario (4) and Montreal (3). The International section experienced the largest loss in Members at 8.
- Most of the 17 Retired Members in the Society (29%) are in the Ottawa section with the Vancouver section accounting for another 4 (24%) and Toronto another 3 (18%).
- Toronto remains the section with the largest number of Student Members at 34 or 32% of the student membership. These students are enrolled in programs at either McMaster University, the University of Toronto, and York University. Although only having 9% of the total number of Students, the Vancouver Section experienced the largest gain in student members the past year increasing their number by 6. These students attend either the University of British Columbia or Simon Fraser University.
- Thirty-eight per cent (38%) of the current membership (164) has been in the Society for two years or less with an additional 10% holding their memberships for between 3-4 years.
- The number of people joining the society during the 2009-2010 membership year was 85, 18 less than in the previous period. Eighty-five new members is the fewest number of people attracted to the Society since 2004.
- Included in the number of new memberships are 15 memberships (10 Member and 5 Student) which were reinstated, i.e. individuals who rejoined the Society after having let their memberships lapse. The actual number of 'new' members, i.e. individuals with no previous association with CORS is, therefore 70. Efforts of CORS Council to encourage previous members to rejoin the Society have, therefore, been beneficial.
- The number of new Members joining the Society in the 2009-2010 membership year was 32; eleven fewer than the previous year. The number of new Students joining CORS was 53 only 2 less than in 2008-2009.
- The CORS Diploma program with its membership requirement has proven over the years to be an effective means of Student member recruitment. From 2004 to 2008, the number of new Student members was on average about 70 with the average number of Diplomas issued

being almost 50. Over the past two years, the number of Diplomas issued has been 32 in 2008-2009 and 18 in 2009-2010; the lowest level ever. It is not surprising that a corresponding decrease in the number of students joining CORS has been witnessed. Diploma Coordinators should, therefore, be encouraged to promote the program with renewed vigour.

- The Toronto section (including Toronto Student) accounted for the most new memberships with 26 or 30%. Hosting INFORMS/CORS 2009 Toronto may be responsible for the number of new members joining the section. The Montreal and Vancouver sections were successful in attracting 13 and 10 new members respectively.
- During the 2009-2010 membership year a total of 110 memberships were discontinued, 8 less than in the previous membership year.
- Of the discontinued memberships, 47 or 43% were Members, 2 or 2% were Retired Members, and 54 or 56% were Student Members.
- The number of discontinued Member memberships decreased over last year by 15 returning to a level more in keeping with that experienced from 2005-2008. The five year high of discontinued Members in 2008-2009 may have been an anomaly.
- Sixty one Student memberships were discontinued in 2009-2010, 7 or 13% more than the previous year. How to retaining Students as members in the Society after they have graduated is something that needs to be explored.
- The most discontinued memberships occurred in the Toronto sections (26) and in Montreal (18).
- Seventy-six or 69% of the memberships cancelled in the 2009-2010 membership year had been held for two years or less. This is an increase in terms of both absolute number and percentage over last year when 65 or 55% of the memberships cancelled had been held for two years or less. An encouraging observation is that the number of discontinued Members in this category no longer accounts for 50% of the total as it did in 2008-2009. In 2009-2010 it was 31%.
- At the commencement of the 2010-2011 membership year 209 or nearly half (50%) of the CORS membership had renewed. At the same time last year, 44% had renewed. The observed improvement could be attributable to a minor change in the invoicing process – the ListServ reminder to renew was sent out on March 29th instead of on April 1st, allowing those prompted by the message to renew to be captured in year-end statistics. Twenty-seven membership renewals were received and processed on March 29th.
- Of the 399 banking transactions conducted on behalf of CORS by Membership Services in the processing of membership renewals and new memberships, 21% of the membership preferred to pay their fees by cheque, 25% by MasterCard and 54% by Visa. Twenty-four percent of the contact was by mail, a notable decrease over the previous year when 37% of the contact was by mail, and 75% was web-based.

At 419, membership in CORS is at its lowest level in five years. Although there have been minor fluctuations in total membership over the past several years, a level in the mid four hundreds has been consistently maintained; the average being 439. This level seems to represent a reasonable and attainable membership level. It is important therefore, to reduce the trend observed over the past two years of more people leaving the Society than joining.

In terms of retention, the departure of Members must be stemmed by ensuring that membership retains its value for all members. The CORS Membership Survey undertaken in February – March 2010 provides some insight into the means to accomplish this and CORS Council should act upon the Future Directions set out in the report summarizing the survey's findings. With respect to recruitment, contacting and the encouraging former Members to rejoin the Society has yielded some success and should continue.

Overall

As shown in Table 1, total membership in the Canadian Operational Research Society at the end of the 2009-2010 membership year (March 31, 2010) was 419. This represents a decrease in membership of 25 over the previous year and the lowest membership level in five years. Indeed, it is just a few members shy of being the lowest in 12 years. Since 2004, although there have been minor fluctuations in total membership (refer to Graph 1), a level in the mid four hundreds has been consistently maintained; the average being 439. This level seems to represent a reasonable and attainable membership level. It is important therefore, to reduce the trend observed over the past two years of more people leaving the Society than joining.

Table 1: CORS Membership 1998-2010*

Membership Year*	Total Membership	Change in Membership	Growth Rate
1997- 1998	468		
1998-1999	446	-22	-4.7%
1999-2000	471	25	5.6%
2000-2001	464	-7	-1.5%
2001-2002	538	74	15.9%
2002-2003	610	72	13.4%
2003-2004	415	-195	-32%
2004-2005	450	35	8.4%
2005-2006	442	-8	-1.8
2006-2007	442	0	0
2007-2008	462	20	4.52%
2008-2009	444	-18	-3.9%
2009-2010	419	-25	-5.6%

* The CORS membership year is from April 1st to March 31st of the following year. The figures presented in this table represent, therefore, the number of the members in the Society at the end of each membership year, i.e. as of March 31st.

** The volatility in the numbers over the 2000-2003 period is accounted for by policy decisions relating to complimentary memberships being included with conference registrations (CORS National as well as SCOPE) and CORS contracting a membership services provider in December 2002. The implications of the former was the ballooning of membership numbers from 2001-2003 and of the latter, the rationalization of the database over the 2003-2004 membership year which resulted in the elimination of lapsed memberships, changes in membership administrative processes, and policy changes relating to conference memberships.

Membership by Member Type

The distribution of CORS membership by member type is presented by absolute number in Table 2, by percentage of total membership in Table 3 and graphically in Graph 2. Currently, 289 or 69% of the membership are Members, 17 or 4% Retired Members, 106 or 25% Student Members, and 7 or 2% Emeritus Members. A close examination of the distribution of the membership by member type reveals that the decrease in membership is primarily attributed to a

Overview of the Membership

decrease in the number of Student Members in the Society which declined from 122 in 2009 to 106 in 2010, a decrease of 22. This is in sharp contrast to the previous year when most of the decrease in membership was experienced in the Member sector and the student population remained unchanged. This past year, the number of Members decreased slightly, by 2, and the Retired members increased by 1. Renewed efforts should be made to recruit student members to the Society by encouraging CORS members in academia to promote the benefits of membership to their students; Coordinators should more actively promote the CORS Diploma at their institutions; and the most effective means of disseminating information to and communicating this target group explored.

Graph 1: CORS Membership 1998-2010

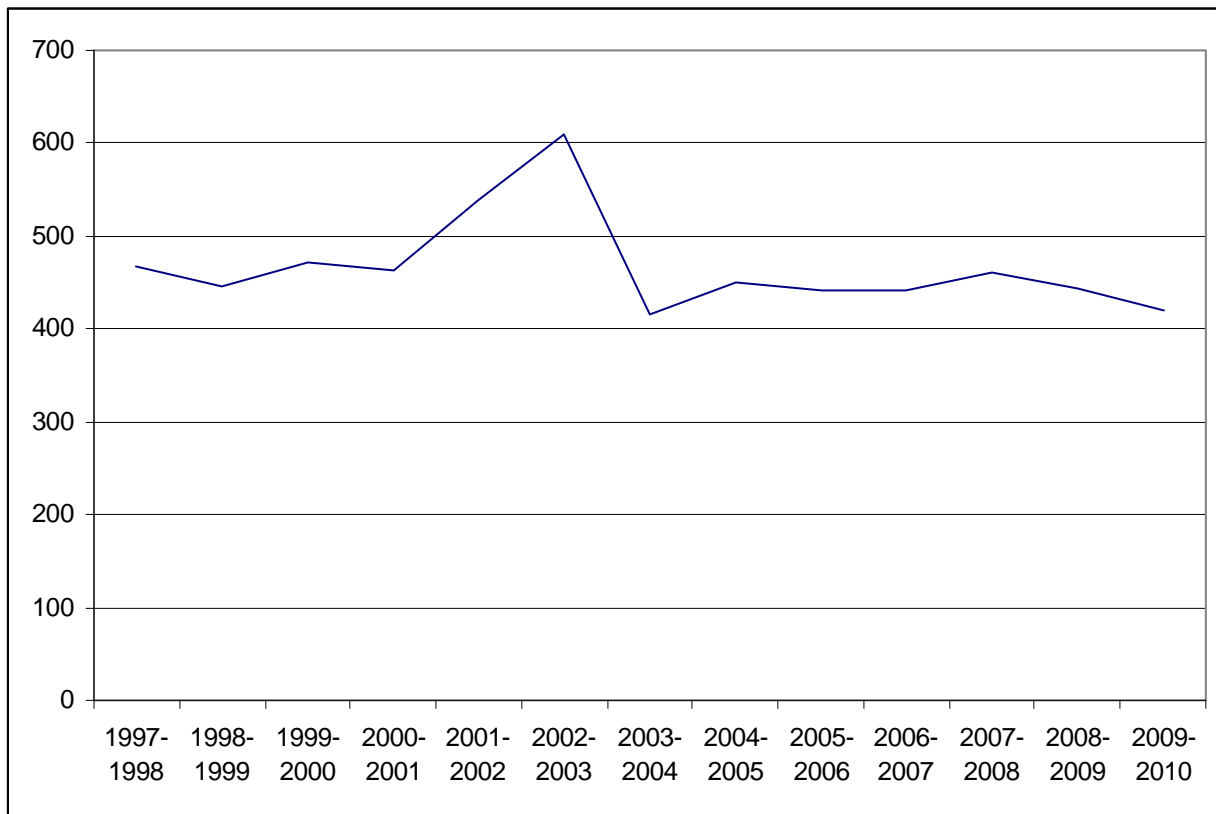


Table 2: CORS Membership by Member Type 2001-2010

<i>Member Type</i>	<i>2000-2001</i>	<i>2001-2002</i>	<i>2002-2003</i>	<i>2003-2004</i>	<i>2004-2005</i>	<i>2005-2006</i>	<i>2006-2007</i>	<i>2007-2008</i>	<i>2008-2009</i>	<i>2009-2010</i>
Member	344	372	418	295	306	288	278	310	291	289
Retired Member	24	23	25	25	21	20	20	17	18	17
Student Member	96	143	167	95	118	129	137	128	128	106
Emeritus Member	-	-	-	-	5	5	7	7	7	7
Total	464	538	610	415	450	442	442	462	444	419

Overview of the Membership

Table 3: Percentage Distribution of CORS Membership by Member Type 2001-2010

<i>Member Type</i>	<i>2000-2001</i>	<i>2001-2002</i>	<i>2002-2003</i>	<i>2003-2004</i>	<i>2004-2005</i>	<i>2005-2006</i>	<i>2006-2007</i>	<i>2007-2008</i>	<i>2008-2009</i>	<i>2009-2010</i>
Member	74%	69%	69%	71%	68%	65%	63%	67%	66%	69%
Retired Member	5%	4%	4%	6%	5%	5%	5%	4%	4%	4%
Student Member	21%	27%	27%	23%	26%	29%	31%	28%	29%	25%
Emeritus Member					1%	1%	2%	2%	1%	2%
Total	100%	100%	100%	100%	100%	100%	100%	100%	100%	100%

Membership by Section

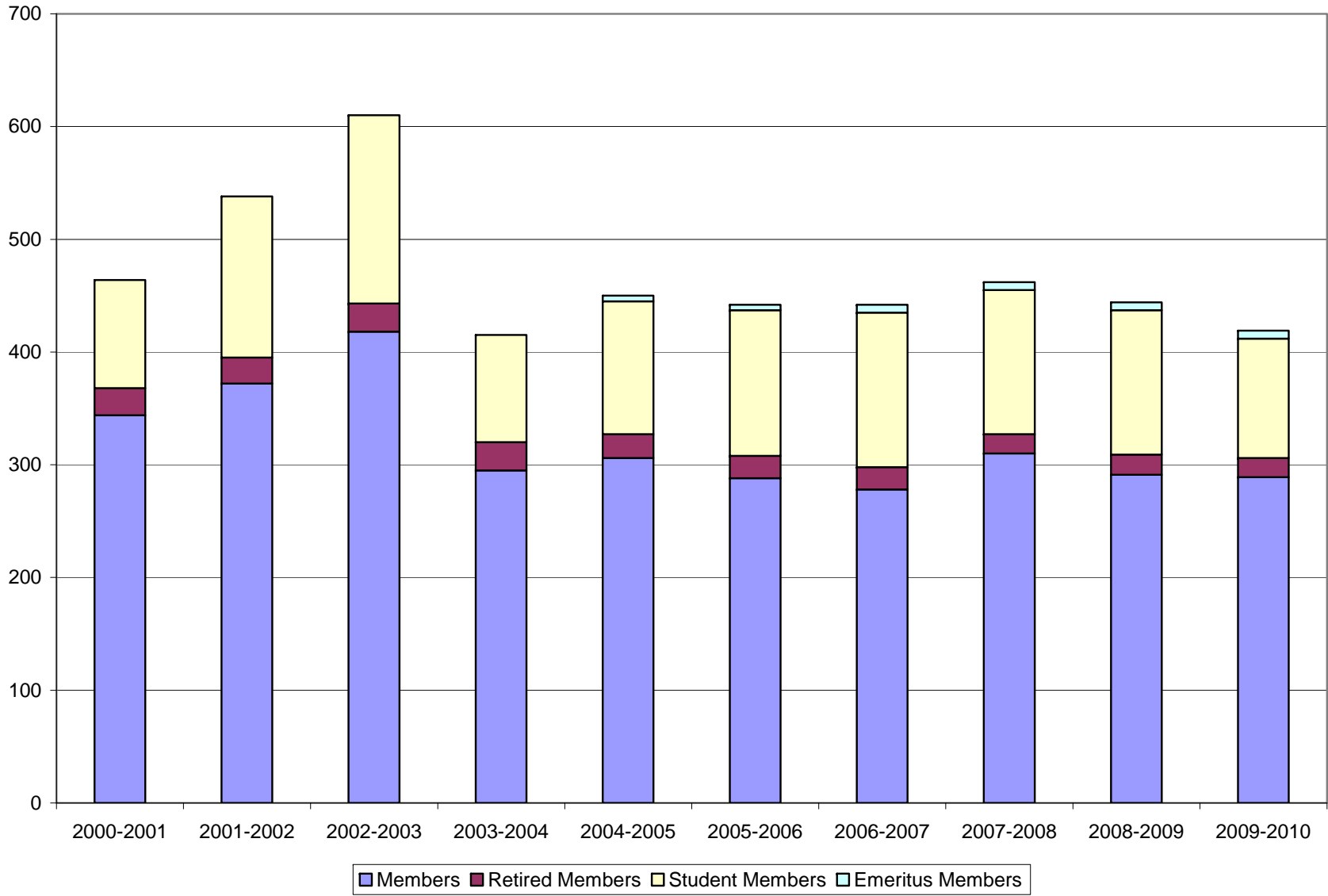
The distribution of the Society's membership by section from 2001 - 2010 is presented in Table 4. The percentage distribution of the membership by section at the end of the 2009-2010 membership year is provided in Graph 3. Graph 4 graphically represents membership by section from a historical perspective. For the purposes of consistency and to aid comparison, unless specifically identified by name, the Toronto Student and Waterloo Student sections have been amalgamated with their regional sections. A detailed review and analysis of the membership within each section is provided in Part 6.

Table 4: CORS Membership by Section 2001-2010

<i>Section</i>	<i>2000-2001</i>	<i>2001-2002</i>	<i>2002-2003</i>	<i>2003-2004</i>	<i>2004-2005</i>	<i>2005-2006</i>	<i>2006-2007</i>	<i>2007-2008</i>	<i>2008-2009</i>	<i>2009-2010</i>
Atlantic	34	43	43	33	38	42	36	30	30	28
Calgary	28	27	32	32	29	32	28	24	24	24
Complimentary	5	5	5	5	0	0	0	0	0	0
Edmonton	35	40	58	36	28	16	20	13	20	18
International	43	75	87	38	41	22	17	32	33	25
Kingston	11	10	10	12	15	15	15	17	11	12
Montreal	45	79	80	39	46	46	38	53	56	51
National	10	1	1	1	1	1	1	1	1	1
Ottawa Student*	4	4	3	3	11	11	5	11	13	0
Ottawa	50	50	54	35	40	33	25	31	34	41
Quebec	28	49	41	24	26	24	24	26	30	25
Saskatoon	14	17	14	9	9	10	11	10	10	9
SW Ontario	31	26	42	37	34	44	61	47	33	37
Toronto	61	55	67	56	56	52	61	71	63	63
Toronto Student	15	13	21	11	29	50	51	41	32	34
Vancouver	27	25	28	24	25	25	28	31	27	34
Vancouver Student*	11	10	16	9	10	8	9	4	4	0
Waterloo Student	6	3	4	7	7	8	10	18	20	14
Winnipeg	6	6	4	4	5	3	2	2	3	3
Total	464	538	610	415	450	442	442	462	444	419

* In 2010, the decision was made to officially amalgamate these Sections with their regional sections.

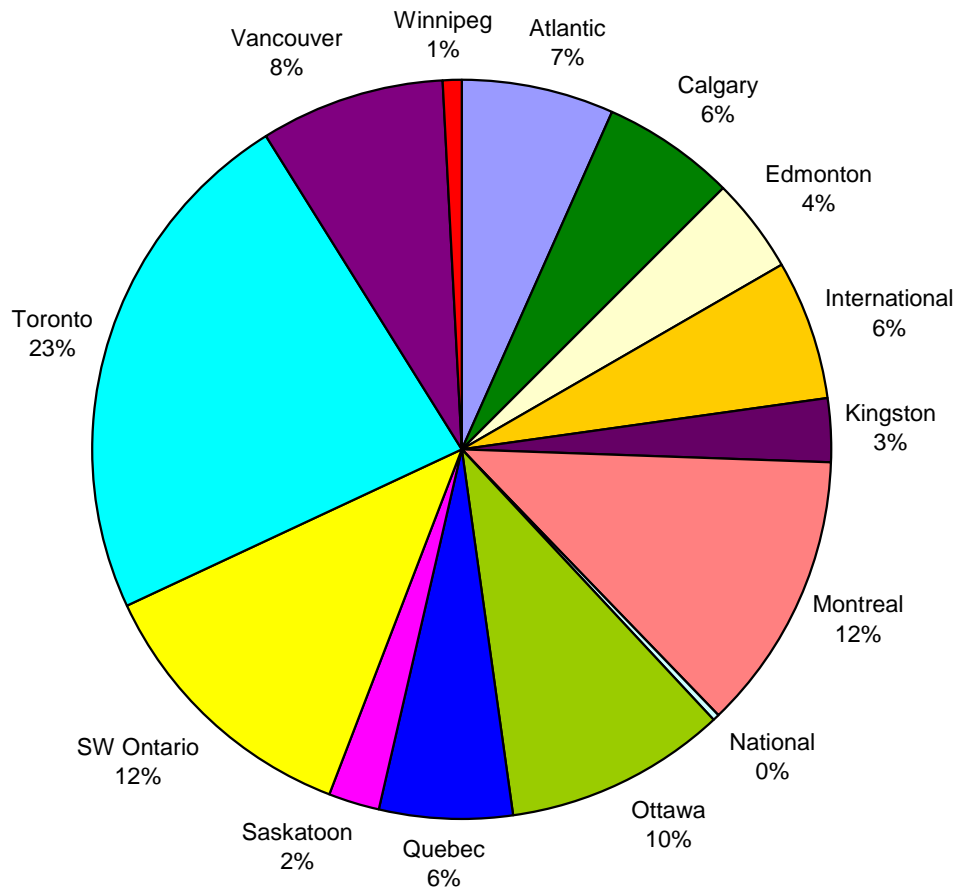
Graph 2: CORS Membership by Member Type 2001-2010



Overview of the Membership

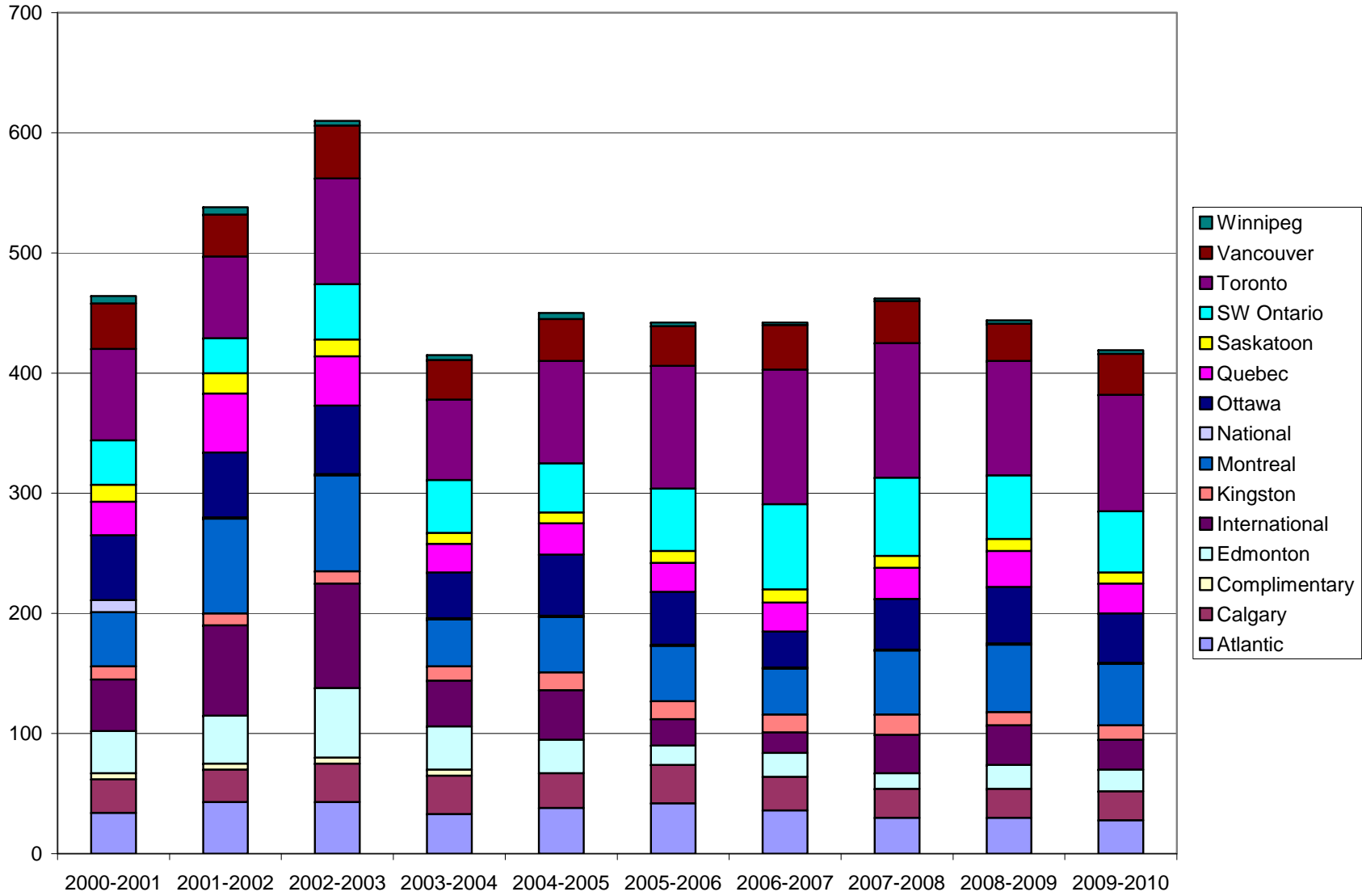
The Toronto Section constitutes the largest section in the Society with 97 members or 23% of total membership. The next largest sections are Montreal and SW Ontario both with 51 members or 12% of the membership. The only three sections not experiencing a decrease in membership were Vancouver, Toronto, and Kingston. Calgary's numbers remain unchanged from last year and have been stable the past three years, albeit at their lowest level in the past ten years. The Atlantic section lost 2 members bringing its total membership to 28, the sections lowest level ever.

Graph 3: Percentage Distribution of CORS Membership by Section March 31, 2010²



² For the purposes of consistency and to aid comparison, the Toronto Student and Waterloo Student sections have been amalgamated with their regional section.

Graph 4: CORS Membership by Section 2001-2010



Membership by Section and Member Type

The distribution of the Society's membership by section and member type as of March 31, 2010 is presented in Table 5 and Graph 5. The percentage distribution of the membership by section and member type is provided in Table 6. Refer to Part 6 for a detailed and historical analysis of the membership by section and member type.

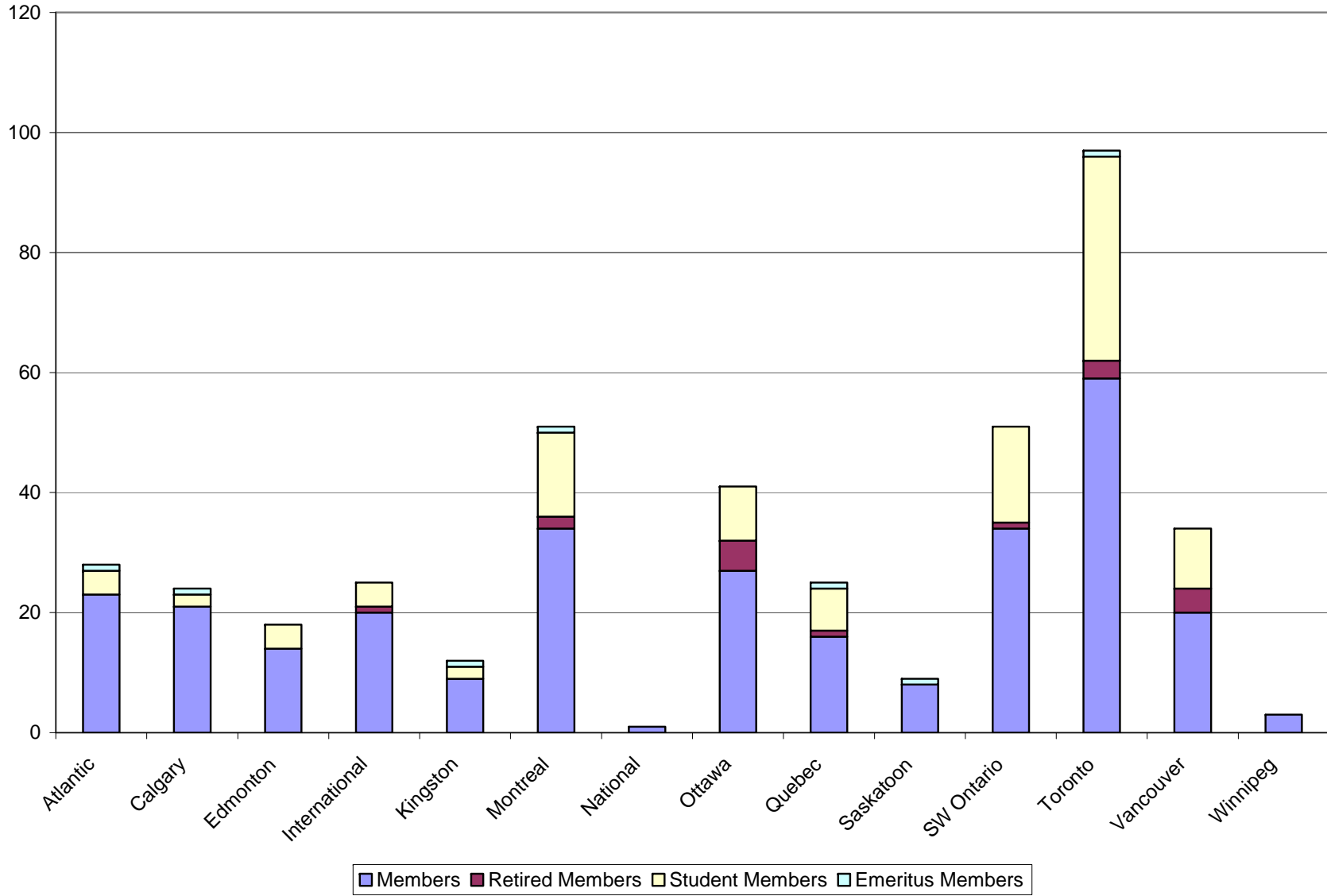
Table 5: CORS Membership by Section and Member Type March 31, 2010

<i>Section</i>	<i>Member</i>	<i>Retired</i>	<i>Student</i>	<i>Emeritus</i>	<i>Total</i>
Atlantic	23	0	4	1	28
Calgary	21	0	2	1	24
Edmonton	14	0	4	0	18
International	20	1	4	0	25
Kingston	9	0	2	1	12
Montreal	34	2	14	1	51
National	1	0	0	0	1
Ottawa	27	5	9	0	41
Quebec	16	1	7	1	25
Saskatoon	8	0	0	1	9
SW Ontario	34	1	16	0	51
Toronto	59	3	34	1	97
Vancouver	20	4	10	0	34
Winnipeg	3	0	0	0	3
Total	289	17	106	7	419

Table 6: Percentage Distribution of CORS Membership by Section and Member Type March 31, 2010

<i>Section</i>	<i>Member</i>	<i>Retired</i>	<i>Student</i>	<i>Emeritus</i>	<i>Total</i>
Atlantic	8%	0%	4%	14%	7%
Calgary	7%	0%	2%	14%	6%
Edmonton	5%	0%	4%	0%	4%
International	7%	6%	4%	0%	6%
Kingston	3%	0%	2%	14%	3%
Montreal	12%	12%	13%	14%	12%
National	0%	0%	0%	0%	0%
Ottawa	9%	29%	8%	0%	10%
Quebec	6%	6%	7%	14%	6%
Saskatoon	3%	0%	0%	14%	2%
SW Ontario	12%	6%	15%	0%	12%
Toronto	20%	18%	32%	14%	23%
Vancouver	7%	24%	9%	0%	8%
Winnipeg	1%	0%	0%	0%	1%
Total	100%	100%	100%	100%	100%

Graph 5: CORS Membership by Section and Member Type March 31, 2010



The section with the most CORS Members is Toronto with 59 or 20% of the Members in the Society. Montreal and SW Ontario are the next largest sections in terms of Members each with 34 or 12%. While Toronto has the most Members, the total number remains unchanged from last year. The sections with the biggest gain in Members are Edmonton (4), SW Ontario (4) and Montreal (3). The International section experienced the largest loss in Members at 8. Most of the 17 Retired Members in the Society (29%) are in the Ottawa section with the Vancouver section accounting for another 4 (24%) and Toronto another 3 (18%). Toronto remains the section with the largest number of Student Members at 34 or 32% of the student membership. These students are enrolled in programs at either McMaster University, the University of Toronto, and York University. Although only having 9% of the total number of Students, the Vancouver Section experienced the largest gain in student members the past year increasing their number by 6. Eighty-eight per cent of the decrease in overall membership is attributed to the decrease in the number of Student members. Montreal's student population decreased by 7 with Edmonton, Quebec, and SW Ontario each decreasing by 6. Emeritus Members are distributed throughout the country. No Emeritus memberships were awarded during the last year.

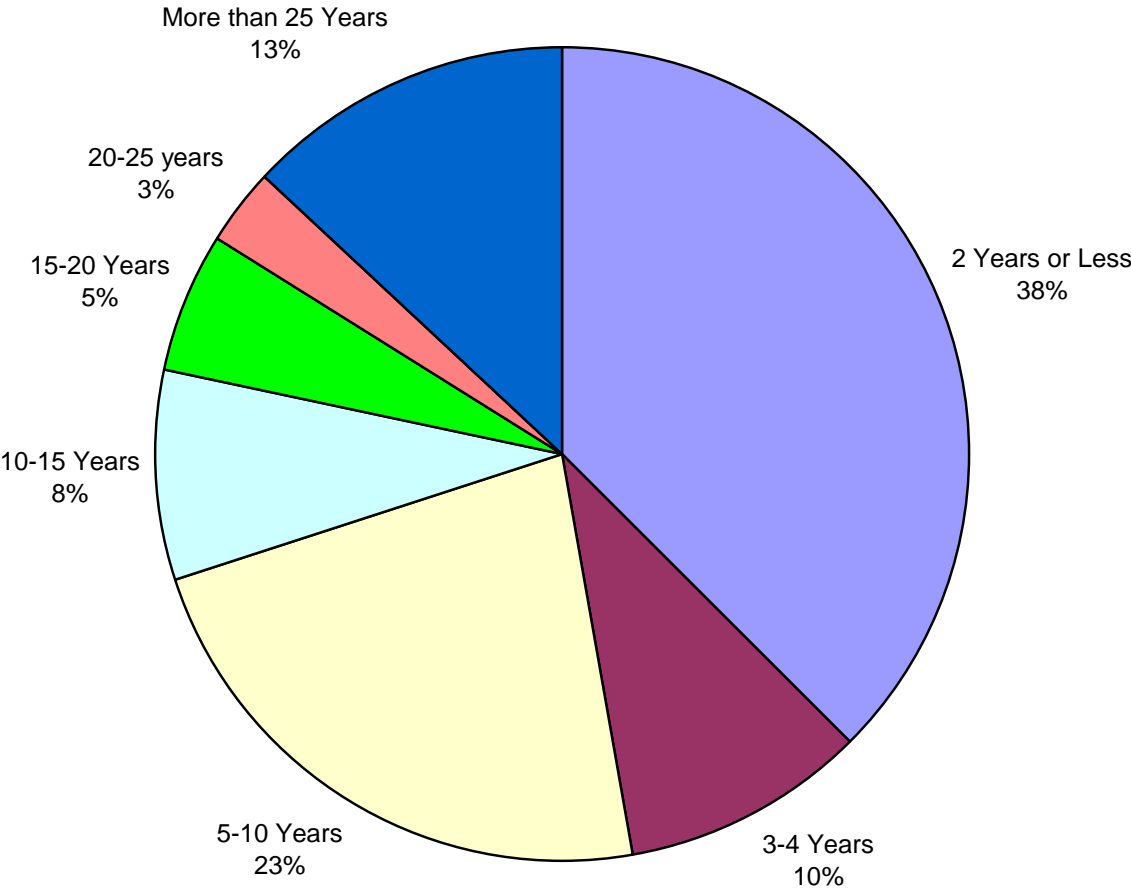
Duration of Membership

Table 7 and Graph 6 provide a snapshot of the CORS membership on the basis of how long an individual has retained membership in the Society. Thirty-eight per cent (38%) of the current membership (164) has been in the Society for two years or less. With 48% of the membership having held their memberships for four years or less retention of these members is essential to the continued vitality of the Society. The proportion of members in the 3-4 year category has increased slightly from 9% to 10% showing that there has been a modicum of success in retention in this category. As Graph 7 reveals there has been a drop in the number of people who have held their memberships for 5-10 years, decreasing as a proportion from 27% to 23% over last year. This is collaborated in Table 16 which shows that 16 individuals who had been in the Society between 5-10 years discontinued their memberships in 2009-2010. The observed increase in the 10-15 year category is, however, evidence that some members are retaining their memberships and continuing their progression from one category to the next.

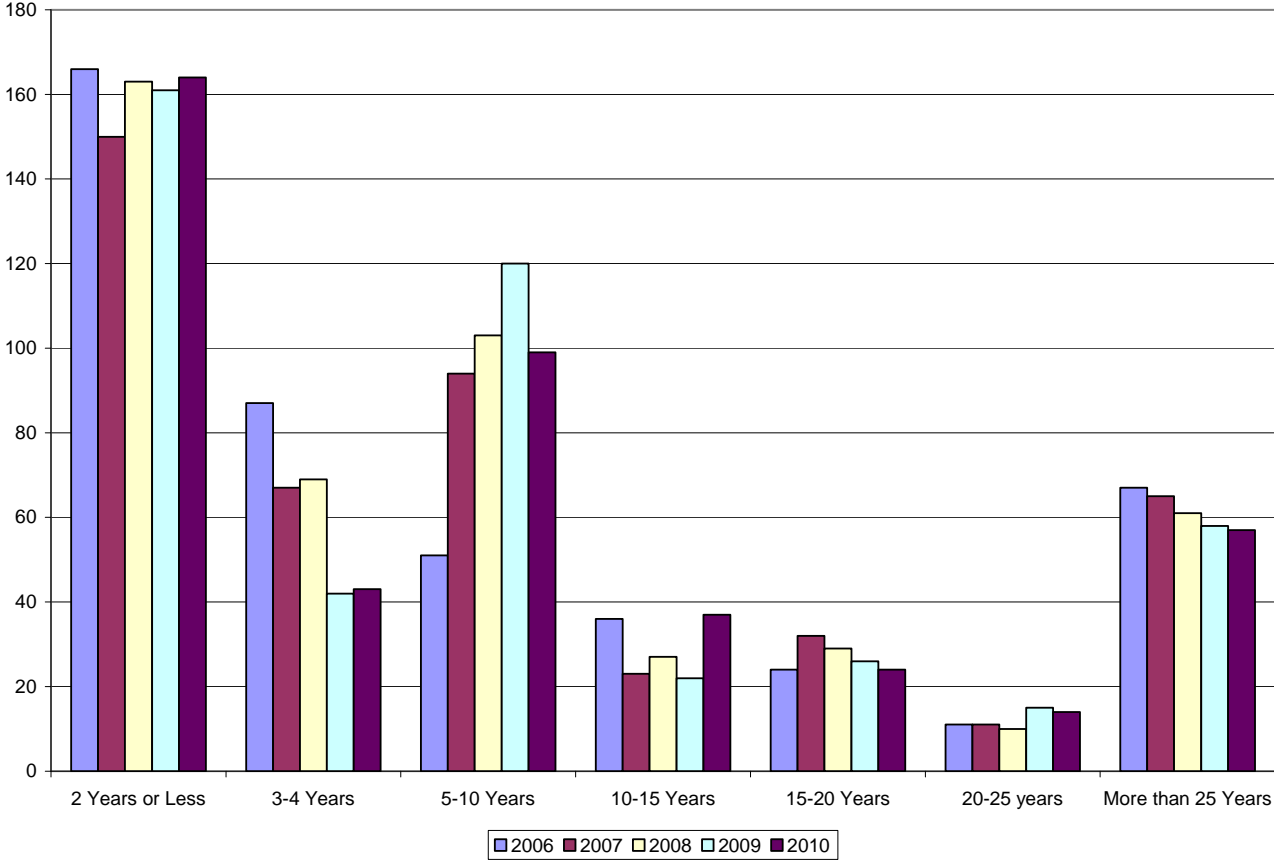
Table 7: CORS Membership by Duration of Membership in the Society as of March 31, 2010

<i>Duration of Membership</i>	<i>Member</i>	<i>Retired</i>	<i>Student</i>	<i>Emeritus</i>	<i>Total</i>
2 Years or Less	77	0	87	0	164
3 -4 Years	32	0	11	0	43
5-10 Years	85	2	11	1	99
10-15 Years	36	1	0	0	37
15-20 Years	24	0	0	0	24
20-25 years	14	0	0	0	14
More than 25 Years	37	14	0	6	57
Total	289	17	106	7	419

Graph 6: Percentage Distribution of CORS Membership by Duration of Membership in the Society as of March 31, 2010



Graph 7: Comparison of CORS Membership by Duration of Membership
2006, 2007, 2008, 2009 and 2010



Overall

As shown in Table 8, the number of people joining the society during the 2009-2010 membership year was 85, 18 less than in the previous period. Eighty-five new members is the fewest number of people attracted to the Society since 2004 and represents the second year in a row where the number of people joining the Society has decreased over the previous year. Included in the number of new memberships are 15 memberships (10 Member and 5 Student) which were reinstated, i.e. individuals who rejoined the Society after having let their memberships lapse. The actual number of ‘new’ members, i.e. individuals with no previous association with CORS is, therefore 70. Efforts of CORS Council to encourage previous members to rejoin the Society have, therefore, been beneficial. For the sake of consistency and comparison, reinstated memberships have been included with the new memberships as was the case in previous years.

Table 8: New CORS Memberships 1998-2010*

<i>Year</i>	<i>Total # New Members</i>
1997-1998	41
1998-1999	36
1999-2000	91
2000-2001	115
2001-2002	156
2002-2003	231
2003-2004	73
2004-2005	133
2005-2006	99
2006-2007	87
2007-2008	128
2008-2009	103
2009-2010	85

* The implications of the March 2003 CORS Council decision to cease the practice of offering one year complimentary memberships to Non CORS members attending the National Conference are reflected in the new membership figures for the subsequent membership years. The price differential in registration fees for Members and Non Members attending the CORS National Conference still encourages some people to join the Society. The decrease in new members joining the Society over in the 2006-2007 membership year may be accounted for by no subsidy in registration fees for CORS Members being offered at CORS 2006 Montreal.

New Memberships by Member Type

As shown in Table 9, the number of new Members joining the Society in the 2009-2010 membership year was 32; eleven fewer than the previous year. The number of new Students joining CORS was 53 only 2 less than in 2008-2009. The CORS Diploma program with its membership requirement has proven over the years to be an effective means of Student member recruitment. From 2004 to 2008, the number of new Student members was on average about 70 with the average number of Diplomas issued being almost 50. Over the past two years, the

Table 9: New CORS Memberships by Member Type 2002-2010

<i>Section</i>	<i>2001-2002</i>	<i>2002-2003</i>	<i>2003-2004</i>	<i>2004-2005</i>	<i>2005-2006</i>	<i>2006-2007</i>	<i>2007-2008</i>	<i>2008-2009</i>	<i>2009-2010</i>
Member	86	119	31	57	27	23	51	46	32
Retired Member	0	3	0	3	1	0	0	2	0
Student Member	70	109	42	73	71	64	77	55	53
Total	156	231	73	133	99	87	128	103	85

number of Diplomas issued has been 32 in 2008-2009 and 18 in 2009-2010; the lowest level ever. It is not surprising that a corresponding decrease in the number of students joining CORS has been witnessed. Diploma Coordinators should, therefore, be encouraged to promote the program with renewed vigour.

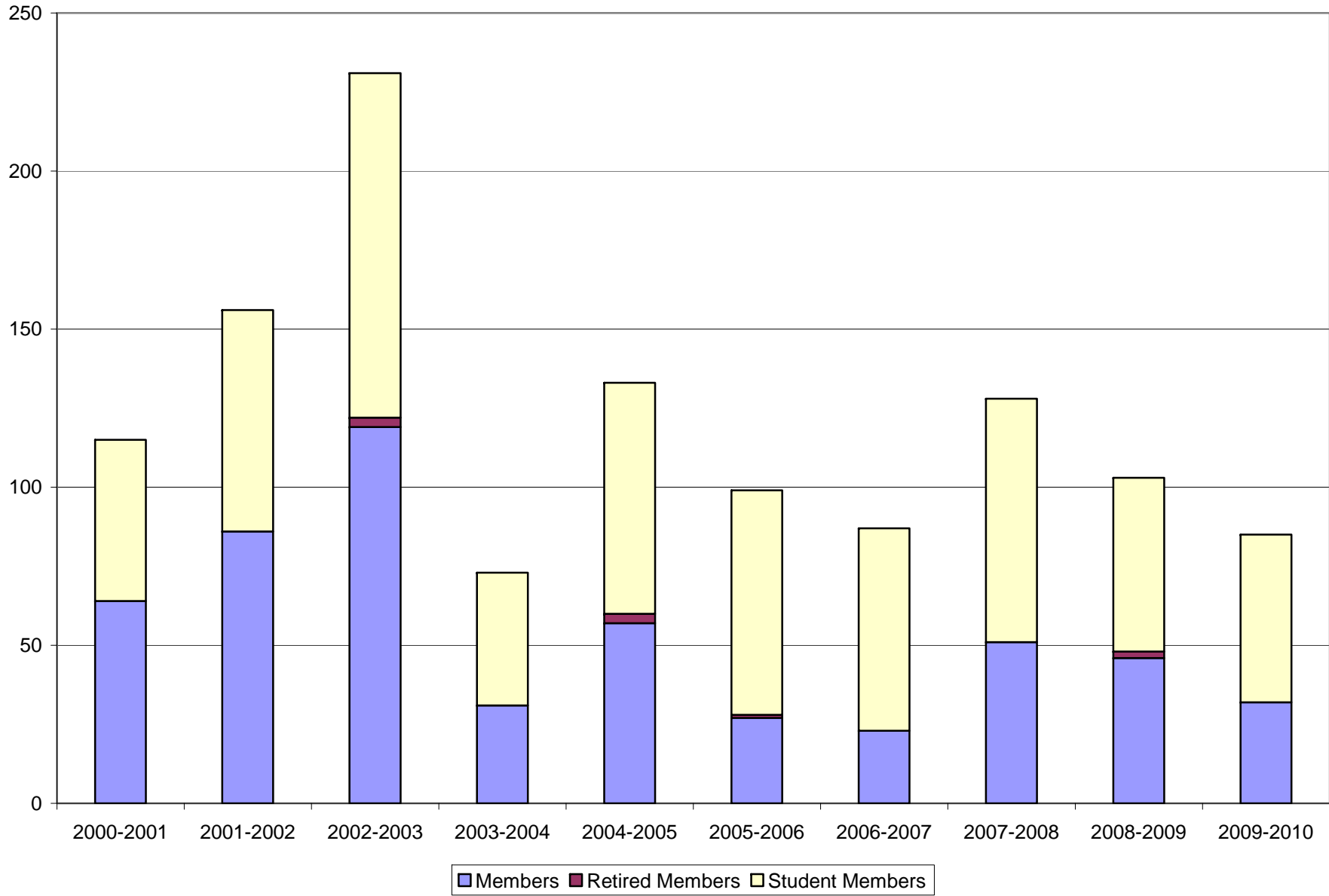
New Memberships by Section

A distribution of the new memberships by section over the past several membership years is presented in Table 10 and graphically for the 2009-2010 membership year in Graph 9. The Toronto section (including Toronto Student) accounted for the most new memberships with 26 or 30%. Hosting INFORMS/CORS 2009 Toronto may be responsible for the number of new

Table 10: New CORS Memberships by Section 2002-2010*

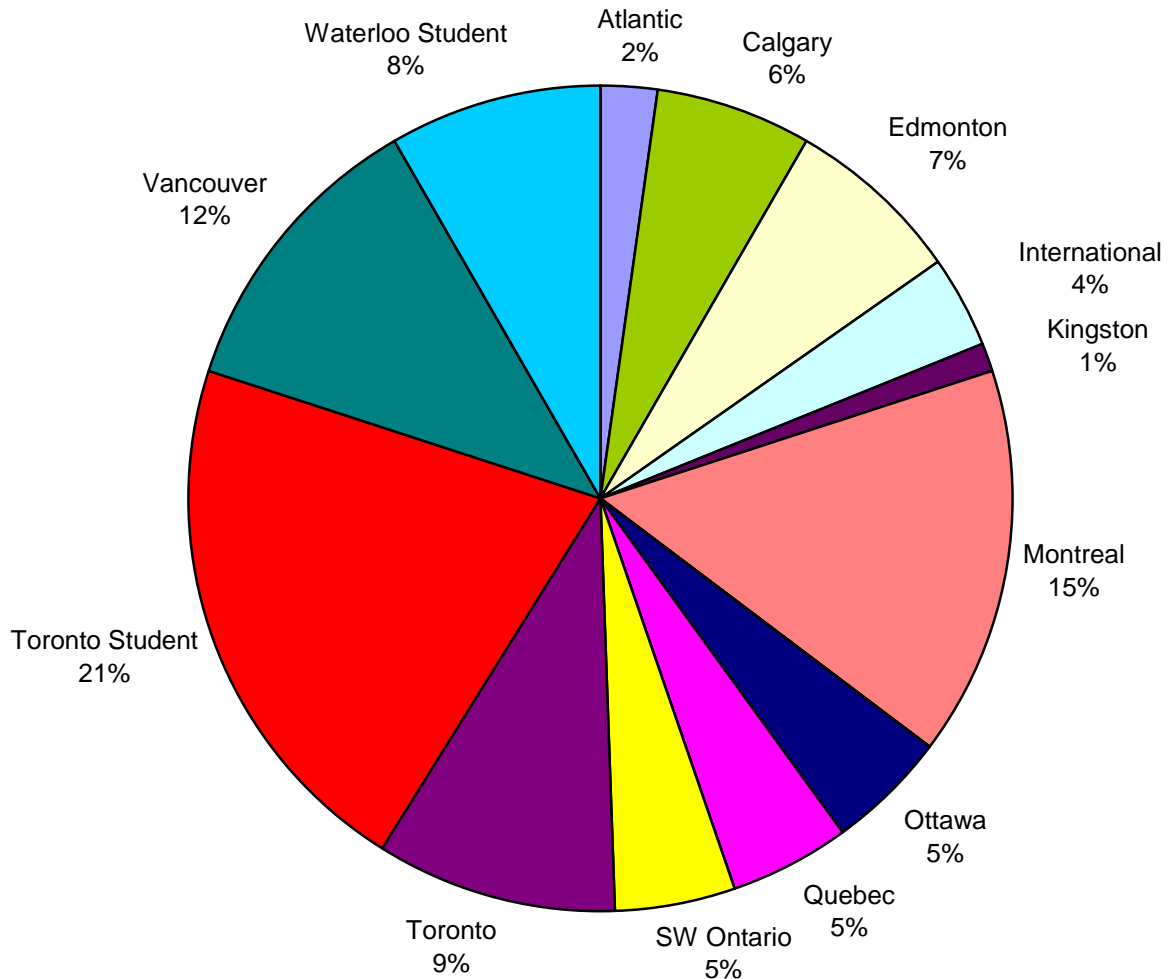
<i>Section</i>	<i>2001-2002</i>	<i>2002-2003</i>	<i>2003-2004</i>	<i>2004-2005</i>	<i>2005-2006</i>	<i>2006-2007</i>	<i>2007-2008</i>	<i>2008-2009</i>	<i>2009-2010</i>
Atlantic	16	8	4	12	10	3	6	4	2
Calgary	1	11	0	6	2	2	2	3	5
Edmonton	6	42	9	12	9	9	4	12	6
International	42	33	9	17	5	1	10	9	3
Kingston	0	1	3	3	1	2	3	0	1
Montreal	39	18	5	12	7	2	21	9	13
National	0	0	0	0	0	0	0	0	0
Ottawa Student	1	2	4	8	7	2	8	7	0
Ottawa	8	15	3	6	0	0	4	7	4
Quebec	26	8	5	5	2	0	7	8	4
Saskatoon	3	1	0	2	1	1	1	2	0
SW Ontario	3	26	9	6	13	24	14	4	4
Toronto	2	18	5	9	5	10	14	10	8
Toronto Student	0	19	5	23	31	19	20	12	18
Vancouver	4	8	4	1	0	4	5	3	10
Vancouver Student	2	15	4	6	3	5	1	2	0
Waterloo Student	0	5	3	1	3	3	8	10	7
Winnipeg	3	1	1	4	0	0	0	1	0
Total	156	231	73	133	99	87	128	103	85

Graph 8: New CORS Memberships by Member Type 2001-2010



members joining the section. The Montreal and Vancouver sections were successful in attracting 13 and 10 new members respectively.

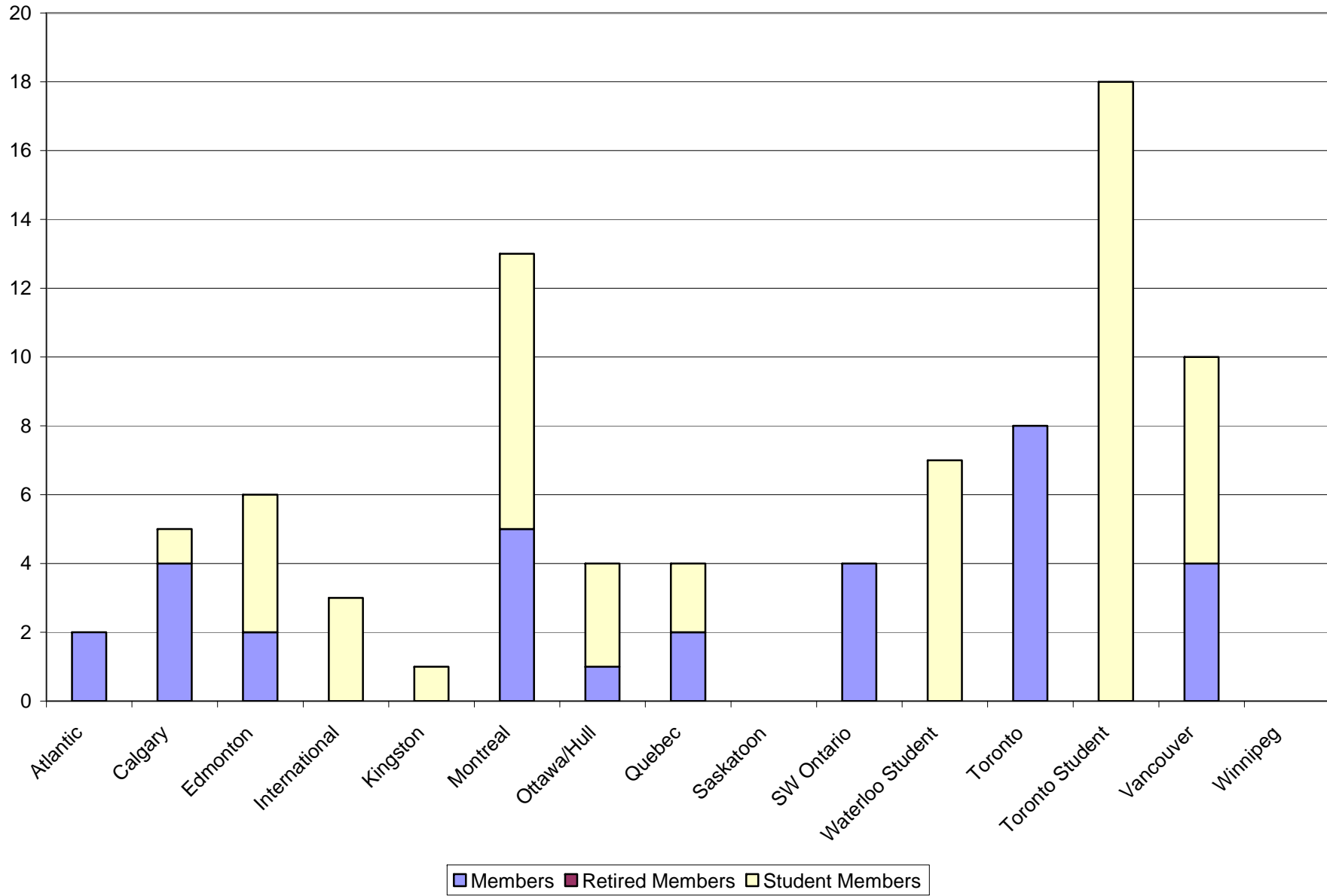
Graph 9: Percentage Distribution of New CORS Memberships by Section for the 2009-2010 Membership Year



New Memberships by Section and Member Type

The distribution of new memberships for the 2009-2010 membership year by section and member type is provided in Table 11 and Graph 10.

Graph 10: New CORS Memberships in the 2009-2010 Membership Year by Section and Member Type



**Table 11: New CORS Memberships in the 2009-2010 Membership Year
By Section and Member Type**

<i>Section</i>	<i>Member</i>	<i>Retired Member</i>	<i>Student</i>	<i>Total</i>
Atlantic	2	0	0	2
Calgary	4	0	1	5
Edmonton	2	0	4	6
International	0	0	3	3
Kingston	0	0	1	1
Montreal	5	0	8	13
Ottawa	1	0	3	4
Quebec	2	0	2	4
Saskatoon	0	0	0	0
SW Ontario	4	0	0	4
Toronto	8	0	0	8
Toronto Student	0	0	18	18
Vancouver	4	0	6	10
Waterloo Student	0	0	7	7
Winnipeg	0	0	0	0
Total	32	0	53	85

Related Miscellaneous Observations

When a person submits an application for membership to the Society, they are asked to indicate their preference for receiving the CORS-SCRO Bulletin. Table 12 reveals that of the 85 people joining the Society last year, 12 or 14% made specific requests to receive a paper copy of the publication. Overall, at the end of the 2009-2010 membership year, the number of specific requests for a paper copy of the Bulletin was 97 or 23% of the total membership by 67 Members, 6 Retired Members, and 24 Student Members. Only 1 fewer paper copy of the Bulletin was required than in the previous year.

Table 12: Requests for a Paper Copy of the CORS-SCRO Bulletin by New CORS Members

<i>Year</i>	<i>Member</i>	<i>Retired Member</i>	<i>Student Member</i>	<i>Total</i>
2004-2005	12	1	24	37
2005-2006	11	0	24	35
2006-2007	9	0	10	19
2007-2008	8	0	16	24
2008-2009	3	0	8	11
2009-2010	2	0	10	12

Overall

Membership in CORS is discontinued if a member is six months in arrears for the current membership year, at a member's request, or if a member's contact information is determined to be invalid. The number of discontinued memberships by year is presented in Table 13. It shows that during the 2009-2010 membership year a total of 110 memberships were discontinued, 8 less than in the previous membership year. Ninety-four per cent of the discontinued members were the result of cancellations due to members being in arrears or choosing not to renew and 6% due to invalid addresses. The latter were primarily student members who moved and did not bother to update their contact information.

Table 13: Discontinued CORS Memberships 2002-2010

	<i>2001- 2002</i>	<i>2002- 2003</i>	<i>2003- 2004</i>	<i>2004- 2005</i>	<i>2005- 2006</i>	<i>2006- 2007</i>	<i>2007- 2008</i>	<i>2008- 2009</i>	<i>2009- 2010</i>
Mail Returned	16	63	21	6	19	10	26	10	7
Cancelled	70	91	263	98	103	86	100	108	103
Total	86	154	284	104	122	96	126	118	110

Discontinued Memberships by Member Type

As shown in Table 14, of the 110 memberships discontinued over the past year, 47 or 43% were Members, 2 or 2% were Retired Members, and 54 or 56% were Student Members. The number of discontinued Member memberships decreased over last year by 15 returning to a level more in keeping with that experienced from 2005-2008. The five year high of discontinued Members in 2008-2009 may have been an anomaly. Sixty one Student memberships were discontinued in 2009-2010, 7 or 13% more than the previous year.

Table 14: Discontinued CORS Memberships by Member Type 2004-2010

<i>Member Type</i>	<i>2003- 2004</i>	<i>2004- 2005</i>	<i>2005- 2006</i>	<i>2006- 2007</i>	<i>2007- 2008</i>	<i>2008- 2009</i>	<i>2009- 2010</i>
Member	164	51	55	44	41	62	47
Retired Member	1	4	5	4	4	2	2
Student Member	119	49	62	48	81	54	61
Total	284	104	122	96	126	118	110

Discontinued Memberships by Section

The distribution of discontinued memberships by Section since 2001 is provided in Table 15. The most discontinued memberships occurred in the Toronto sections (26) and in Montreal (18).

Table 15: Discontinued CORS Memberships by Section 2002-2010

	2001-2002	2002-2003	2003-2004	2004-2005	2005-2006	2006-2007	2007-2008	2008-2009	2009-2010
Atlantic	5	7	15	9	5	9	10	4	4
Calgary	3	5	11	9	3	6	6	3	5
Complimentary	0	0	0	5	0	0	0	0	0
Edmonton	6	20	40	20	19	4	10	4	8
International	11	19	57	14	23	5	1	10	10
Kingston	1	2	2	1	2	3	2	7	0
Montreal	4	17	40	7	8	10	8	7	18
National	9	0	0	0	0	0	0	0	0
Ottawa	6	14	22	3	16	14	5	9	10
Quebec	6	14	21	3	4	0	4	5	10
Saskatoon	1	4	5	1	0	1	2	1	1
SW Ontario	14	13	13	9	11	8	31	20	11
Toronto	10	23	37	14	24	24	38	35	26
Vancouver	7	15	20	6	6	11	9	13	7
Winnipeg	3	1	1	3	1	1	0	0	0
Total	86	154	284	104	122	96	126	118	110

Discontinued Memberships by Section and Member Type

Discontinued memberships by section and member type for the 2009-2010 membership year is presented in Table 16 and in Graph 11.

Duration of Cancelled CORS Memberships

While gaining insight into the magnitude and member type of those who do not renew their CORS memberships has value, an important piece of information that is not obvious from the statistics alone is how long the membership is held before that decision is made. The duration of the memberships cancelled in the 2009-2010 membership year by member type is provided in Table 17. Table 17 reveals that 76 or 69% of the memberships cancelled in the 2009-2010 membership year had been held for two years or less. This is an increase in terms of both absolute number and percentage over last year when 65 or 55% of the memberships cancelled had been held for two years or less. An encouraging observation is that the number of discontinued Members in this category no longer accounts for 50% of the total as it did in 2008-2009. In 2009-2010 it was 31%. The discontinuation of Student memberships once again accounts for the majority in this category at 67% albeit at a lower proportion than observed

**Table 16: Discontinued CORS Memberships in the 2009-2010 Membership Year
By Section and Member Type**

<i>Section</i>	<i>Member</i>	<i>Retired Member</i>	<i>Student Member</i>	<i>Total</i>
Atlantic	1	1	2	4
Calgary	5	0	0	5
Edmonton	2	0	6	8
International	7	0	3	10
Kingston	0	0	0	0
Montreal	4	1	13	18
Ottawa	5	0	5	10
Quebec	3	0	7	10
Saskatoon	1	0	0	1
SW Ontario	1	0	10	11
Toronto	11	0	15	26
Vancouver	7	0	0	7
Winnipeg	0	0	0	0
Total	47	2	61	110

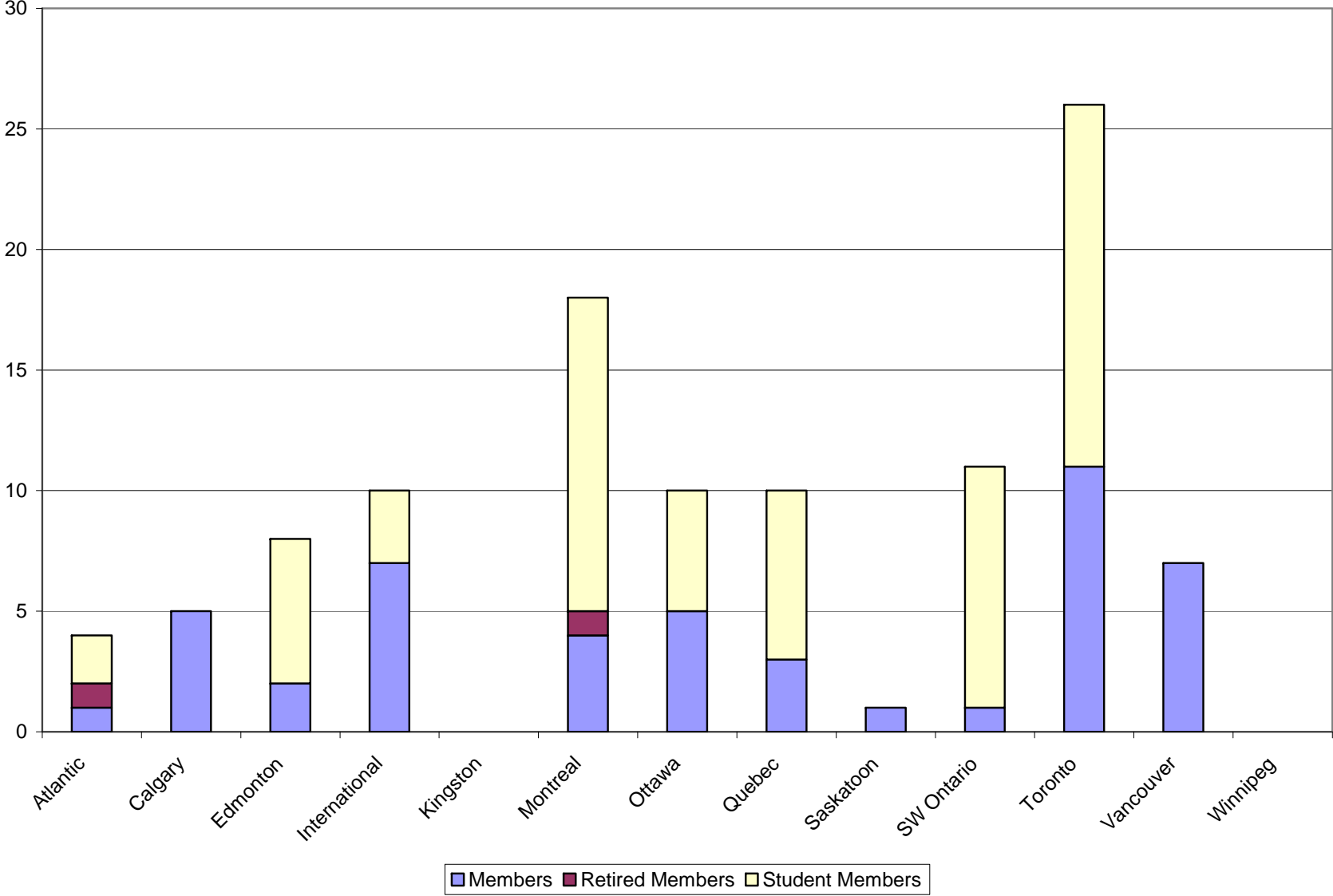
Table 17: Duration of CORS Memberships Cancelled in 2009-2010 Membership Year

<i>Category</i>	<i>Member</i>	<i>Retired Member</i>	<i>Student Member</i>	<i>Total</i>
2 Years or Less	24	1	51	76
3-4 Years	7	1	8	16
5-10 Years	10		2	12
10-15 Years	0		0	0
15-20 years	3		0	3
20-25 Years	2		0	2
More than 25 years	1		0	1
Total	47	2	61	110

in the mid 2000s. Generally, it is the pattern that very few students retain their memberships after completing their program of studies. The number of members not renewing their memberships in the 5-10 year categories appears to have slowed with the number decreasing from 16 in 2008-2009 to 12 in the current year. The number of members in the 10-15 year categories discontinuing with the Society was zero compared to 7 last year. A few life-long committed Members did not renew their memberships.

Ensuring that membership retains its value for all members is important. The CORS Membership Survey undertaken in February – March 2010 provides some insight into the means to accomplish this. The survey findings reveal that members join the society primarily for the following reasons: pride and loyalty to the Canadian OR community, to take advantage of networking opportunities and for professional development. Local section events promoting these activities should be supported both administratively and fiscally.

Graph 11: Discontinued CORS Memberships in the 2009-2010 Membership Year by Section and Member Type



Overall

A snap shot of the membership at the end of the 2009-2010 membership year in terms of the number of membership renewals processed before the payment due date of April 1, 2010 is provided in Table 18. At the commencement of the 2010-2011 membership year 209 or nearly half (50%) of the CORS membership had renewed. At the same time last year, 44% had renewed. The observed improvement could be attributable to a minor change in the invoicing process – the ListServ reminder to renew was sent out on March 29th instead of on April 1st, allowing those prompted by the message to renew to be captured in year-end statistics. Twenty-seven membership renewals were received and processed on March 29th. Refer to Graph 12 to easily identify those sections where efforts should be made to encourage renewals in an attempt to improve membership retention.

Table 18: Payment Status of CORS Membership by Section March 31, 2010

Section	Memberships Renewed	Fees Due for Current Year	Total # of Members
Atlantic	16	12	28
Calgary	12	12	24
Edmonton	6	12	18
International	13	12	25
Kingston	3	9	12
Montreal	22	29	51
National	0	1	1
Ottawa	27	14	41
Quebec	14	11	25
Saskatoon	5	4	9
SW Ontario	21	30	51
Toronto	55	42	97
Vancouver	14	20	34
Winnipeg	1	2	3
Total	209	210	419

Method of Payment

Over the 2009-2010 membership year, about 400 banking transactions were conducted on behalf of CORS by Membership Services in the processing of membership renewals and new memberships. Table 19 provides an indication of how the membership prefers to pay their fees – 21% by cheque, 25% by MasterCard and 54% by Visa. The number of members paying by cheque decreased over last year. Twenty-four percent of the contact was by mail, a notable decrease over the previous year when 37% of the contact was by mail, and 75% was web-based. Not all of the credit card transactions were submitted online; about 16 were submitted by mail.

Graph 12 : Payment Status of CORS Membership by Section as of March 31, 2010

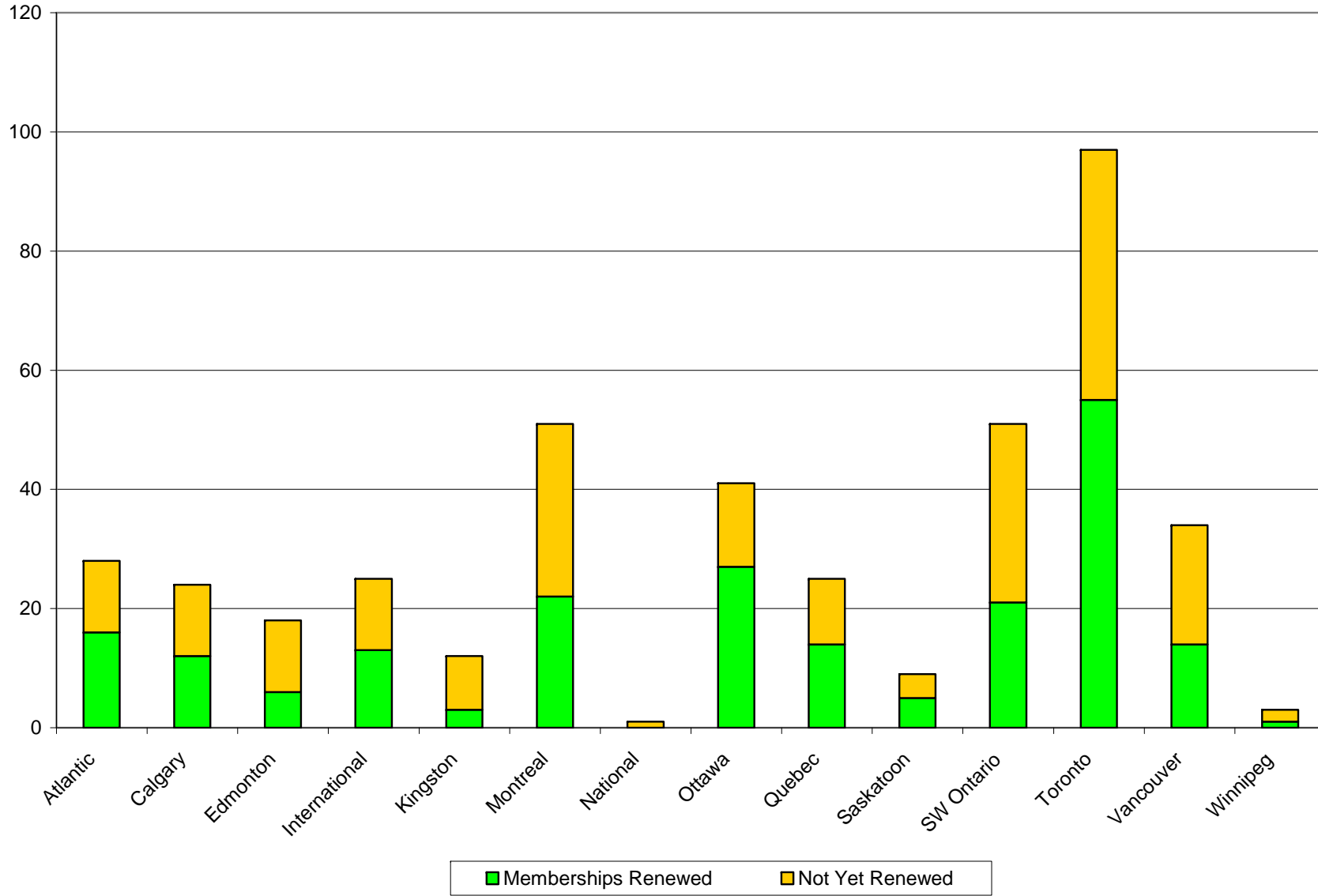


Table 19: Method of Payment of Transactions Conducted in the 2009-2010 Membership Year

<i>Method of Payment</i>	<i>Number</i>	<i>%</i>
Cheque	83	21%
MasterCard	99	25%
Visa	217	54%
Total	399	100%

Since the preferred method of contact by most CORS members is online, it is important that the membership has confidence in the security of the web-based forms. In a March 2010 report, Membership Services informed Council that a few members have raised the concern that when renewing their membership online the link is "http://" instead of "https://" and are concerned about the security of the online payment. Despite assurances have been received from Windsor IT Services that all CORS online forms are secure and encrypted by a SSL even though the https/lock graphic does not appear, the forms were developed over ten years ago and are outdated. CORS Council dealt with the matter by the following Action Item:

Action Item: Vinh will discuss this issue with Wendy and bring the issue forward at a later meeting, prior to the next renewal cycle.

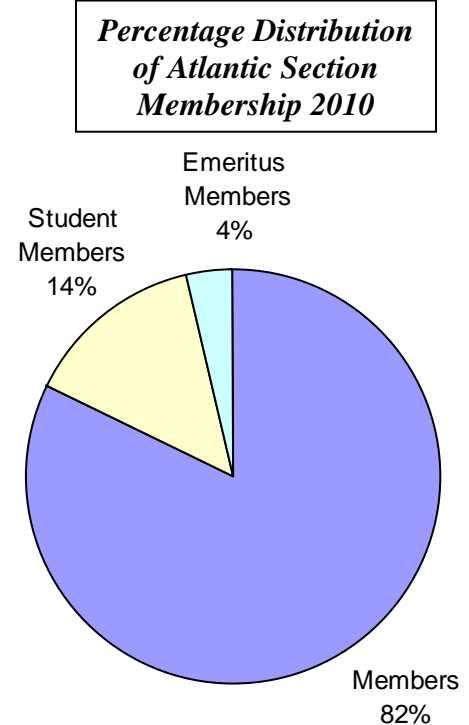
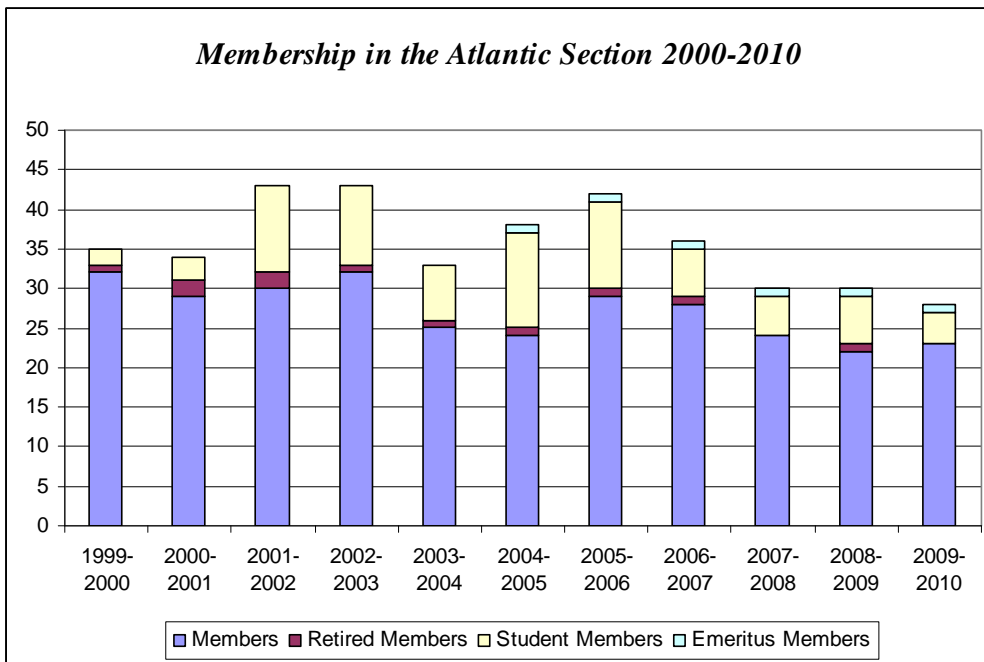
Part 6: Membership Statistics by Section

Atlantic Section

In terms of total number, membership in the Atlantic section experienced a net loss over the previous year with the number of discontinued memberships exceeding new memberships by 2. Total membership is at its lowest level in ten years. The number of Members experienced a net gain of 1, the former Retired Member decided the time had come not to renew and no new Students joined the section.

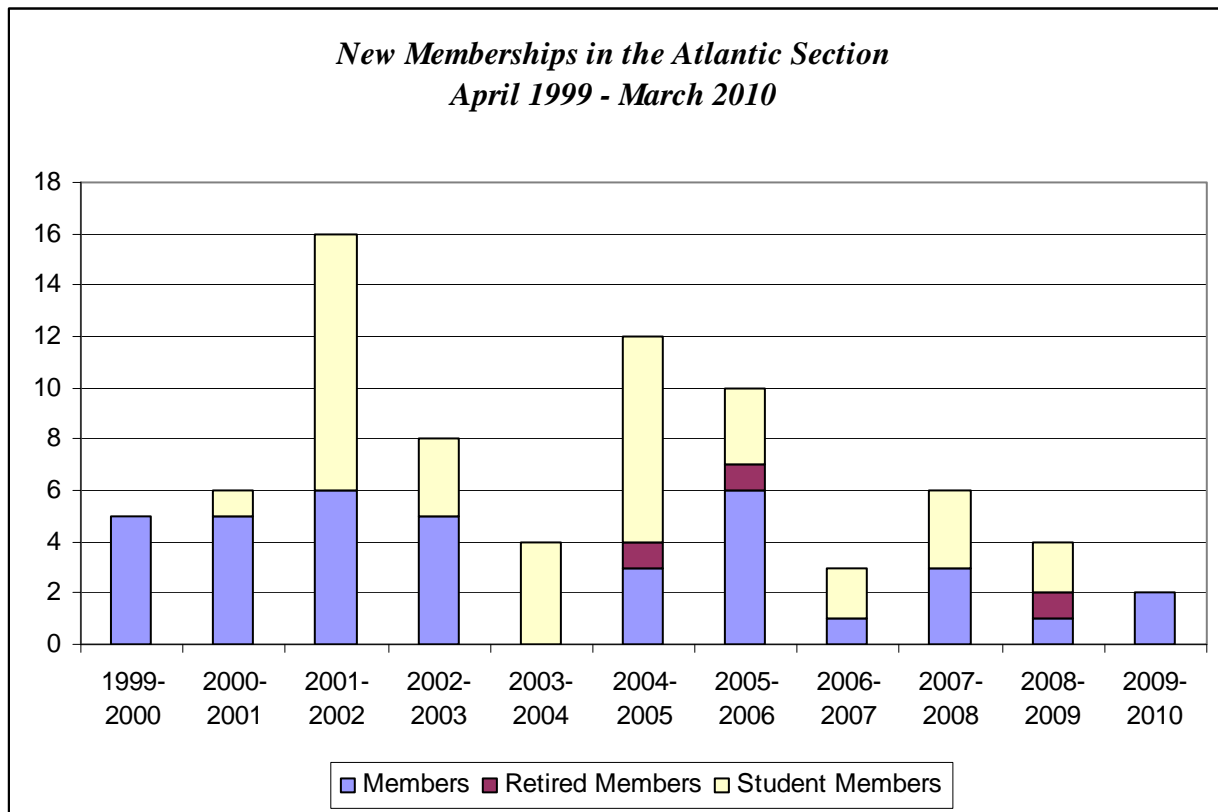
**Membership in the Atlantic Section by Member Type
2000-2010**

<i>Member Type</i>	<i>1999-2000</i>	<i>2000-2001</i>	<i>2001-2002</i>	<i>2002-2003</i>	<i>2003-2004</i>	<i>2004-2005</i>	<i>2005-2006</i>	<i>2006-2007</i>	<i>2007-2008</i>	<i>2008-2009</i>	<i>2009-2010</i>
Member	32	29	30	32	25	24	29	28	24	22	23
Retired Member	1	2	2	1	1	1	1	1	0	1	0
Student Member	2	3	11	10	7	12	11	6	5	6	4
Emeritus Member	-	-	-	-	-	-	1	1	1	1	1
Total	35	34	43	43	33	38	42	36	30	30	28



*New Memberships in the Atlantic Section by Member Type
April 1999 – March 2010*

<i>Member Type</i>	<i>1999-2000</i>	<i>2000-2001</i>	<i>2001-2002</i>	<i>2002-2003</i>	<i>2003-2004</i>	<i>2004-2005</i>	<i>2005-2006</i>	<i>2006-2007</i>	<i>2007-2008</i>	<i>2008-2009</i>	<i>2009-2010</i>
Member	5	5	6	5	0	3	6	1	3	1	2
Retired Member	0	0	0	0	0	1	1	0	0	1	0
Student Member	0	1	10	3	4	8	3	2	3	2	0
Total	5	6	16	8	4	12	10	3	6	4	2



*Discontinued Memberships in the Atlantic Section by Member Type
April 2002 – March 2009*

<i>Member Type</i>	<i>2002-2003</i>	<i>2003-2004</i>	<i>2004-2005</i>	<i>2005-2006</i>	<i>2006-2007</i>	<i>2007-2008</i>	<i>2008-2009</i>	<i>2009-2010</i>
Member	2	9	6	1	4	5	3	1
Retired Member	1	0	0	1	0	1	0	1
Student Member	4	6	3	3	5	4	1	2
Total	7	15	9	5	9	10	4	4

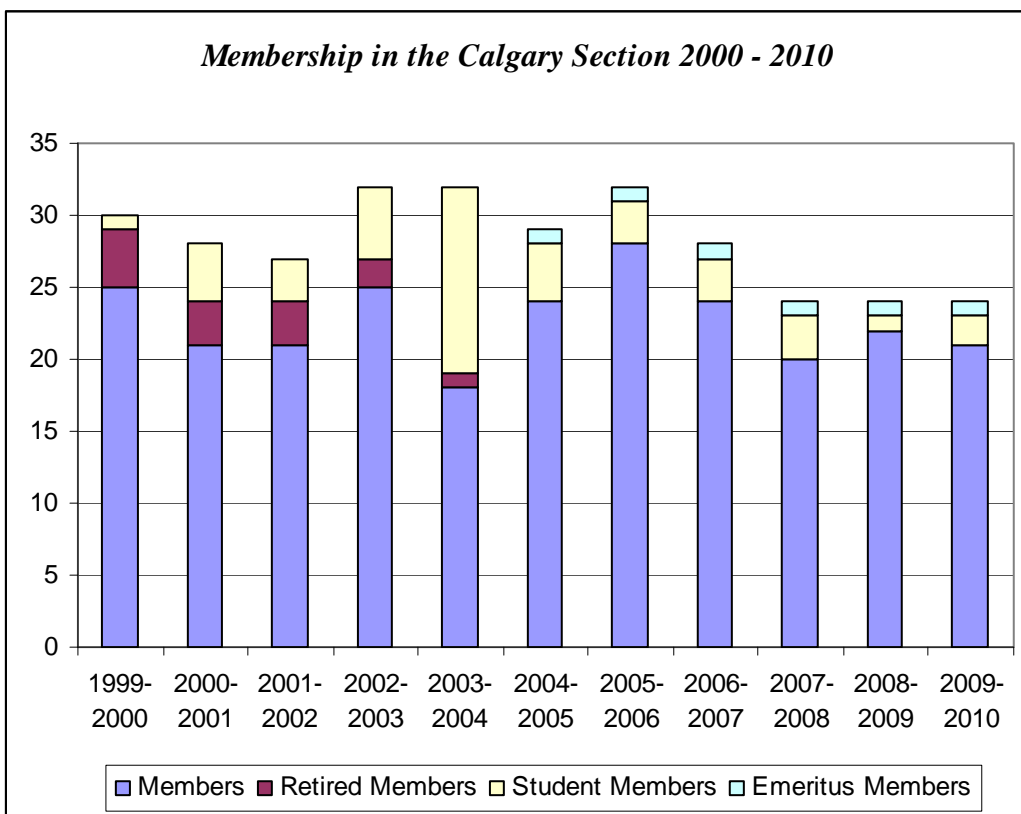
Membership Statistics by Section

Calgary Section

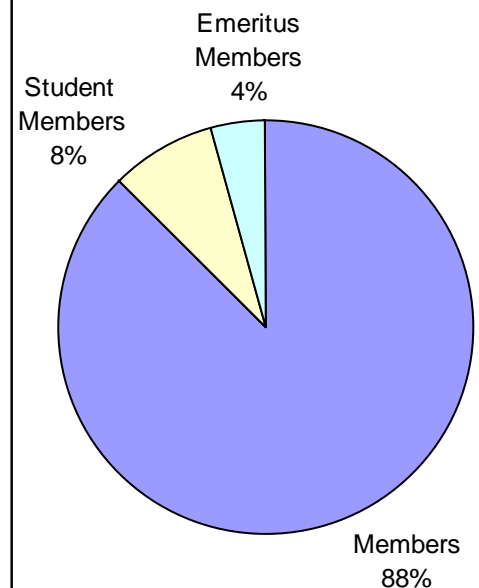
Although total membership in the Calgary section remains unchanged from last year, it experienced a net loss of 1 Member and a net gain one Student member. Four new Members joined the section but 5 chose not to renew. Student membership is almost non-existent at 2. In 2003, student membership was at an all time high of 13. Efforts to encourage students at the University of Calgary to obtain a CORS Diploma and take advantage of the benefits offer to students should be renewed in order to return student membership levels to those seen in 2003.

**Membership by Type in the Calgary Section by Member Type
2000--2010**

<i>Member Type</i>	<i>1999- 2000</i>	<i>2000- 2001</i>	<i>2001- 2002</i>	<i>2002- 2003</i>	<i>2003- 2004</i>	<i>2004- 2005</i>	<i>2005- 2006</i>	<i>2006- 2007</i>	<i>2007- 2008</i>	<i>2008- 2009</i>	<i>2009- 2010</i>
Member	25	21	21	25	18	24	28	24	20	22	21
Retired Member	4	3	3	2	1	0	0	0	0	0	0
Student Member	1	4	3	5	13	4	3	3	3	1	2
Emeritus Member						1	1	1	1	1	1
Total	30	28	27	32	32	29	32	28	24	24	24

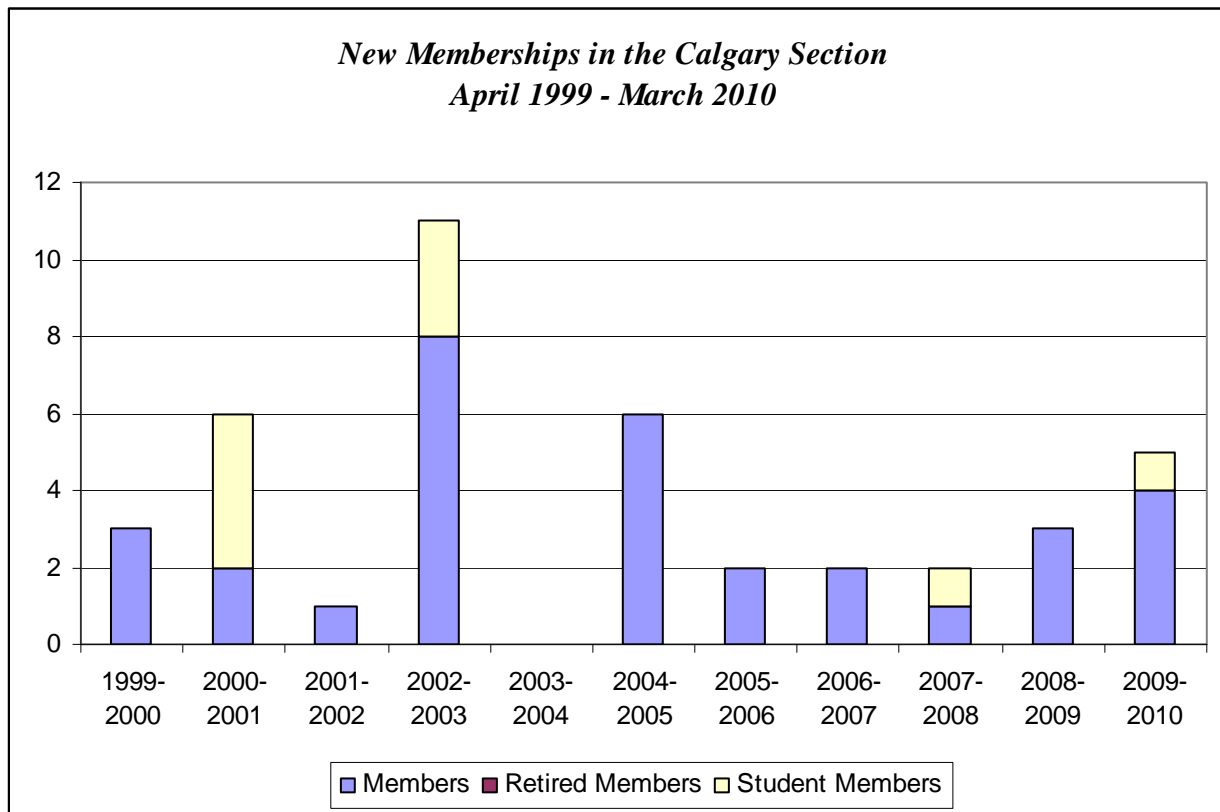


**Percentage Distribution
of Calgary Section
Membership 2010**



*New Memberships in the Calgary Section by Member Type
April 1999 – March 2010*

<i>Member Type</i>	<i>1999-2000</i>	<i>2000-2001</i>	<i>2001-2002</i>	<i>2002-2003</i>	<i>2003-2004</i>	<i>2004-2005</i>	<i>2005-2006</i>	<i>2006-2007</i>	<i>2007-2008</i>	<i>2008-2009</i>	<i>2009-2010</i>
Member	3	2	1	8	0	6	2	2	1	3	4
Retired Member	0	0	0	0	0	0	0	0	0	0	0
Student Member	0	4	0	3	0	0	0	0	1	0	1
Total	3	6	1	11	0	6	2	2	2	3	5



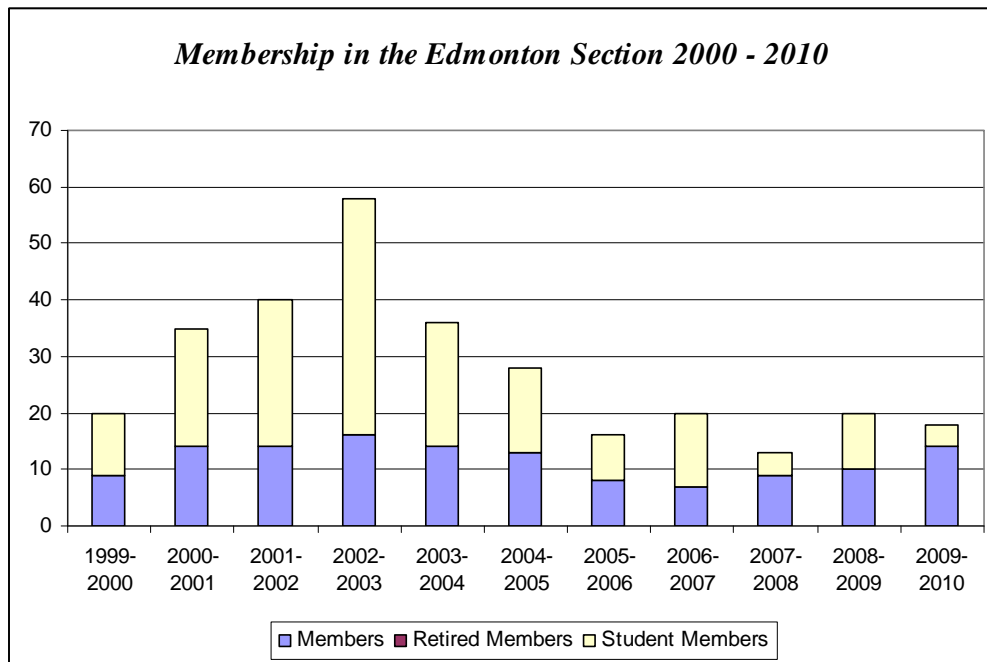
*Discontinued Memberships by in the Calgary Section by Member Type
April 2002 – March 2010*

<i>Member Type</i>	<i>2002-2003</i>	<i>2003-2004</i>	<i>2004-2005</i>	<i>2005-2006</i>	<i>2006-2007</i>	<i>2007-2008</i>	<i>2008-2009</i>	<i>2009-2010</i>
Member	2	8	0	1	6	6	1	5
Retired Member	2	1	0	0	0	0	0	0
Student Member	1	1	9	2	0	0	2	0
Total	5	11	9	3	6	6	3	5

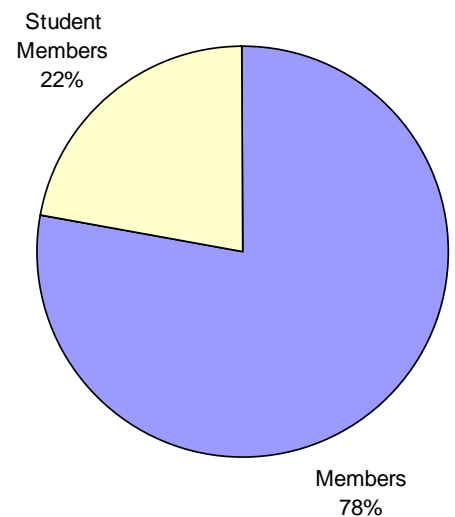
The Edmonton section experienced an overall net decrease in membership over the 2009-2010 with membership levels falling from 20 to 18. A net gain, however, was achieved in the number of Members which is currently at 14 or 78% of the total compared to last year's 50%. Two student members in this section renewed as Members upon the completion of their program but for the most part most Student members discontinued their memberships. The number of students in the Edmonton section peaked in 2002-2003 as a direct result of offering complimentary memberships to those participating in the SCOPE (Student Conference on Operations) held at the University of Alberta. Perhaps the numbers the past few years reflect the cyclical nature of degree programs with students joining at the beginning of their program and then two years later, graduating and letting their memberships lapse.

**Membership in the Edmonton Section by Member Type
2000-2010**

<i>Member Type</i>	<i>1999-2000</i>	<i>2000-2001</i>	<i>2001-2002</i>	<i>2002-2003</i>	<i>2003-2004</i>	<i>2004-2005</i>	<i>2005-2006</i>	<i>2006-2007</i>	<i>2007-2008</i>	<i>2008-2009</i>	<i>2009-2010</i>
Member	9	14	14	16	14	13	8	7	9	10	14
Retired Member	0	0	0	0	0	0	0	0	0	0	0
Student Member	11	21	26	42	22	15	8	13	4	10	4
Total	20	35	40	58	36	28	16	20	13	20	18

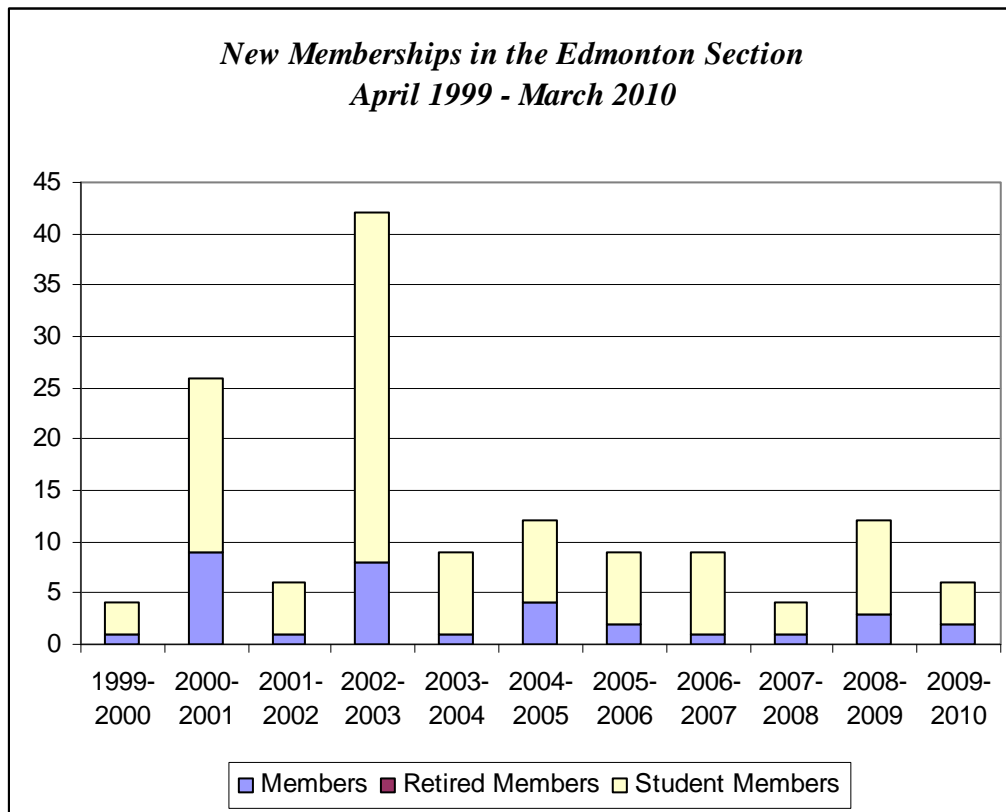


**Percentage Distribution
of Edmonton Section
Membership 2010**



*New Memberships in the Edmonton Section by Member Type
April 1999 - March 2010*

<i>Member Type</i>	<i>1999-2000</i>	<i>2000-2001</i>	<i>2001-2002</i>	<i>2002-2003</i>	<i>2003-2004</i>	<i>2004-2005</i>	<i>2005-2006</i>	<i>2006-2007</i>	<i>2007-2008</i>	<i>2008-2009</i>	<i>2009-2010</i>
Member	1	9	1	8	1	4	2	1	1	3	2
Retired Member	0	0	0	0	0	0	0	0	0	0	0
Student Member	3	17	5	34	8	8	7	8	3	9	4
Total	4	26	6	42	9	12	9	9	4	12	6



*Discontinued Memberships in the Edmonton Section by Member Type
April 2002 - March 2010*

<i>Member Type</i>	<i>2002-2003</i>	<i>2003-2004</i>	<i>2004-2005</i>	<i>2005-2006</i>	<i>2006-2007</i>	<i>2007-2008</i>	<i>2008-2009</i>	<i>2009-2010</i>
Member	8	4	5	7	2	1	1	2
Retired Member	0	0	0	0	0	0	0	0
Student Member	12	36	15	12	2	9	3	6
Total	20	40	20	19	4	10	4	8

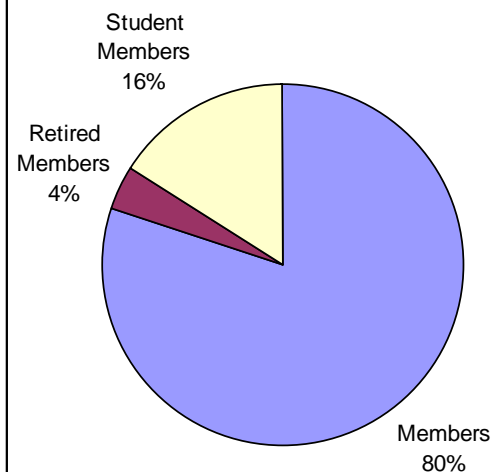
Membership in the International section decreased by 29% over the past year from 28 in 2008-2009 to 20 in 2009-2010. The reduced registration fee offered to CORS Members attending CORS/INFORMS Toronto and appears to be an incentive for international colleagues to join the Society. As reflected in the figures, however, these memberships are often not renewed. The peak in International members observed in the early 2000s was a consequence of free memberships offered as part of conference registrations. Numbers plummeted when the policy was discontinued in early 2004.

*Membership in the International Section by Member Type
2000-2010*

<i>Member Type</i>	<i>1999-2000</i>	<i>2000-2001</i>	<i>2001-2002</i>	<i>2002-2003</i>	<i>2003-2004</i>	<i>2004-2005</i>	<i>2005-2006</i>	<i>2006-2007</i>	<i>2007-2008</i>	<i>2008-2009</i>	<i>2009-2010</i>
Member	31	35	57	68	31	37	21	17	27	28	20
Retired Member	2	2	2	1	1	0	0	0	0	0	1
Student Member	8	6	16	18	6	4	1	0	5	5	4
Total	41	43	75	87	38	41	22	17	32	33	25

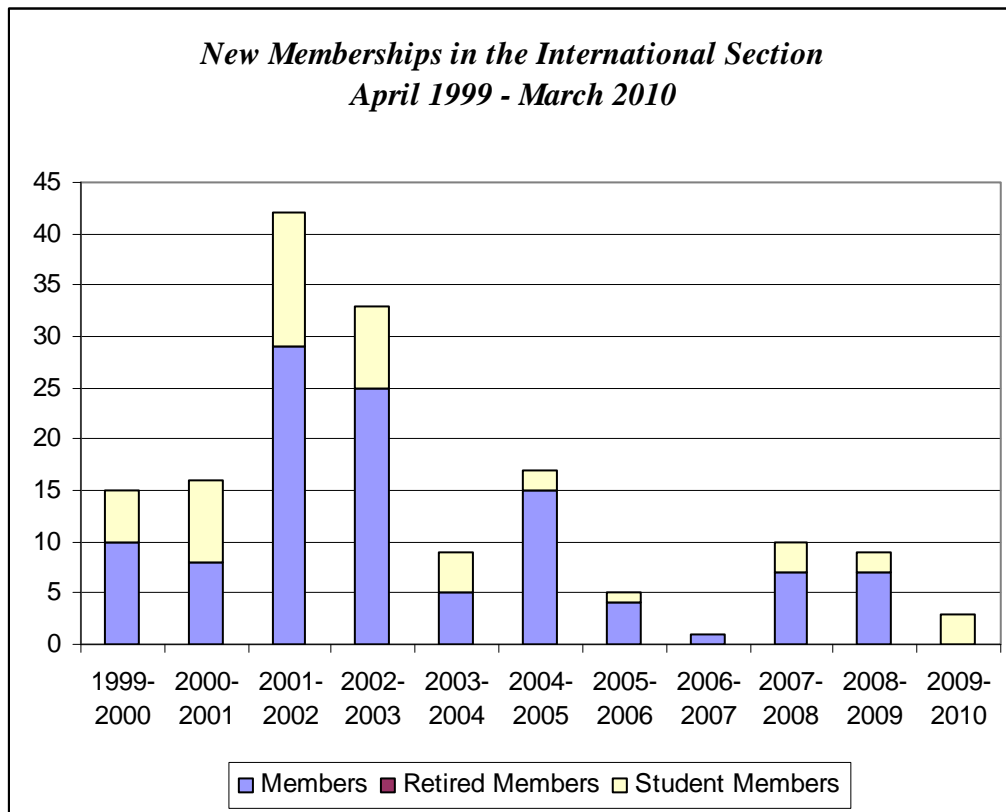


*Percentage Distribution
of International Section
Membership 2010*



*New Memberships in the International Section by Member Type
April 1999 – March 2010*

<i>Member Type</i>	<i>1999-2000</i>	<i>2000-2001</i>	<i>2001-2002</i>	<i>2002-2003</i>	<i>2003-2004</i>	<i>2004-2005</i>	<i>2005-2006</i>	<i>2006-2007</i>	<i>2007-2008</i>	<i>2008-2009</i>	<i>2009-2010</i>
Member	10	8	29	25	5	15	4	1	7	7	0
Retired Member	0	0	0	0	0	0	0	0	0	0	0
Student Member	5	8	13	8	4	2	1	0	3	2	3
Total	15	8	42	33	9	17	5	1	10	9	3



*Discontinued Memberships in the International Section by Member Type
April 2002 – March 2010*

<i>Member Type</i>	<i>2002-2003</i>	<i>2003-2004</i>	<i>2004-2005</i>	<i>2005-2006</i>	<i>2006-2007</i>	<i>2007-2008</i>	<i>2008-2009</i>	<i>2009-2010</i>
Member	14	42	10	19	4	1	8	7
Retired Member	1	0	1	0	0	0	0	0
Student Member	4	15	3	4	1	0	2	3
Total	19	57	14	23	5	1	10	10

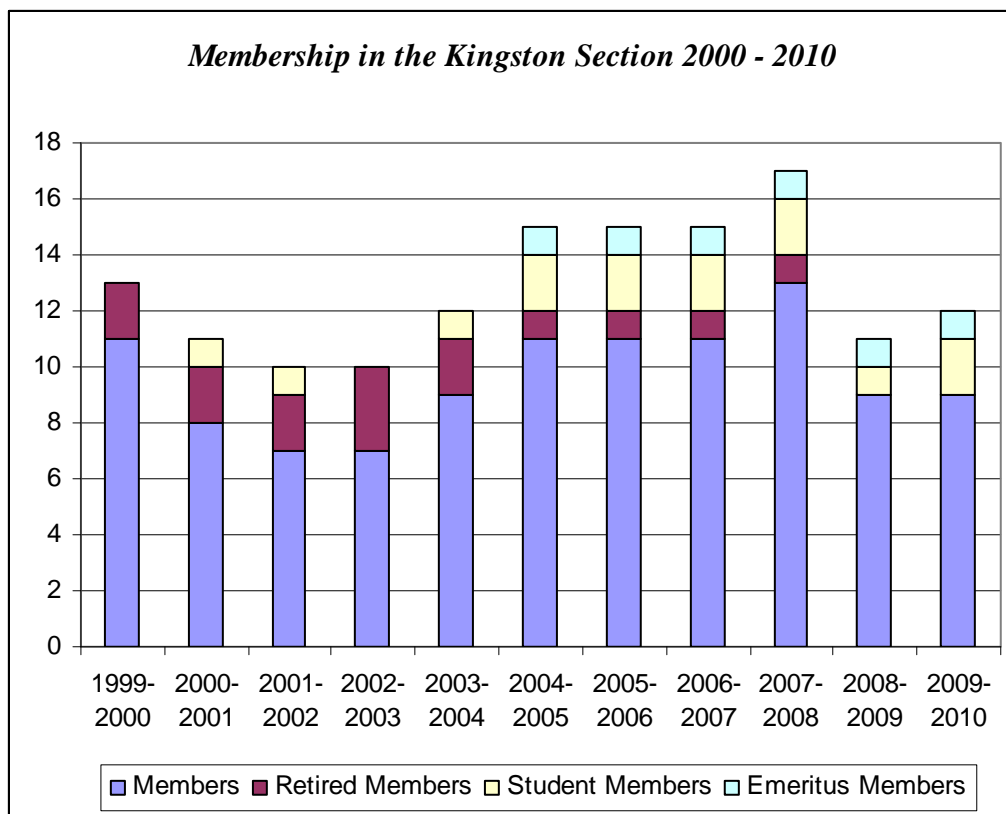
Membership Statistics by Section

Kingston Section

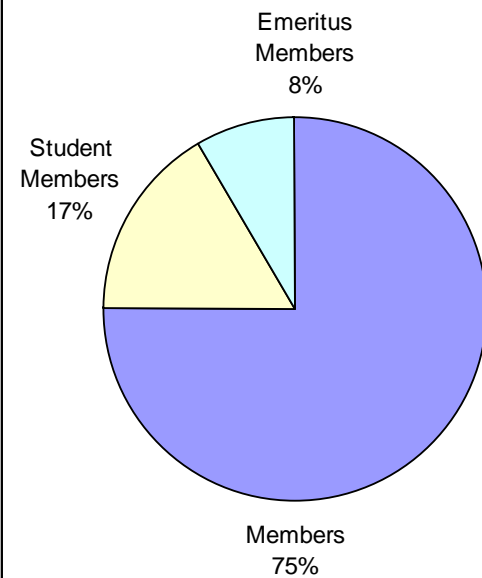
Membership in the Kingston section increased by 1 Student member over the past year. Membership appears to be relatively stable in the section.

**Membership in the Kingston Section by Member Type
2000-2010**

<i>Member Type</i>	<i>1999-2000</i>	<i>2000-2001</i>	<i>2001-2002</i>	<i>2002-2003</i>	<i>2003-2004</i>	<i>2004-2005</i>	<i>2005-2006</i>	<i>2006-2007</i>	<i>2007-2008</i>	<i>2008-2009</i>	<i>2009-2010</i>
Member	11	8	7	7	9	11	11	11	13	9	9
Retired Member	2	2	2	3	2	1	1	1	1	0	0
Student Member	0	1	1	0	1	2	2	2	2	1	2
Emeritus Member	0	0	0	0	0	1	1	1	1	1	1
Total	13	11	10	10	12	15	15	15	17	11	12

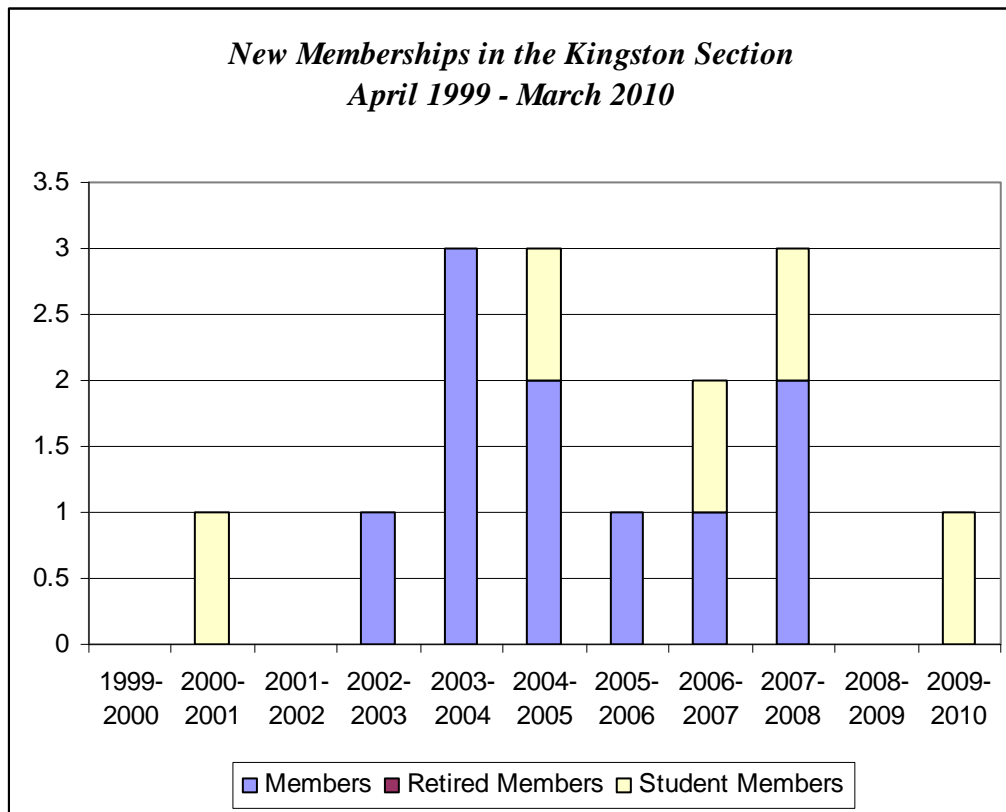


**Percentage Distribution
of Kingston Section
Membership 2010**



***New Memberships in the Kingston Section by Member Type
April 1999 – March 2010***

<i>Member Type</i>	<i>1999-2000</i>	<i>2000-2001</i>	<i>2001-2002</i>	<i>2002-2003</i>	<i>2003-2004</i>	<i>2004-2005</i>	<i>2005-2006</i>	<i>2006-2007</i>	<i>2007-2008</i>	<i>2008-2009</i>	<i>2009-2010</i>
Member	0	0	0	1	3	2	1	1	2	0	0
Retired Member	0	0	0	0	0	0	0	0	0	0	0
Student Member	0	1	0	0	0	1	0	1	1	0	1
Total	0	1	0	1	3	3	1	2	3	0	1



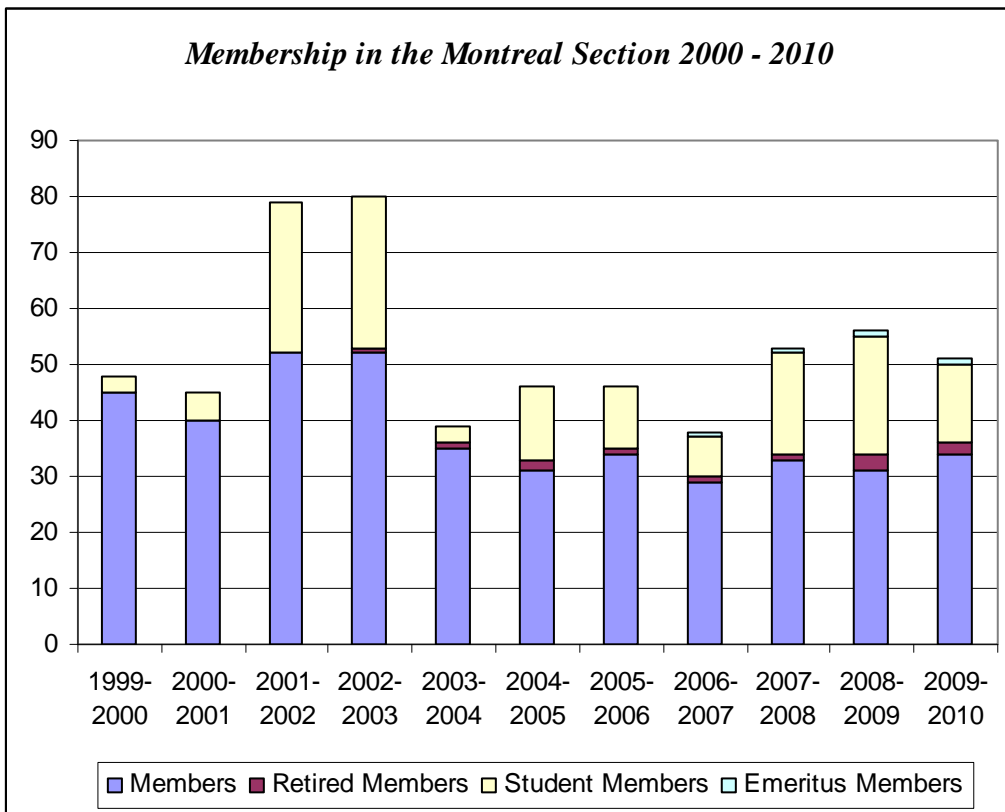
***Discontinued Memberships in the Kingston Section by Member Type
April 2002 – March 2010***

<i>Member Type</i>	<i>2002-2003</i>	<i>2003-2004</i>	<i>2004-2005</i>	<i>2005-2006</i>	<i>2006-2007</i>	<i>2007-2008</i>	<i>2008-2009</i>	<i>2009-2010</i>
Member	1	2	0	2	1	1	4	0
Retired Member	0	0	1	0	1	0	1	0
Student Member	1	0	0	0	1	1	2	0
Total	2	2	1	2	3	2	7	0

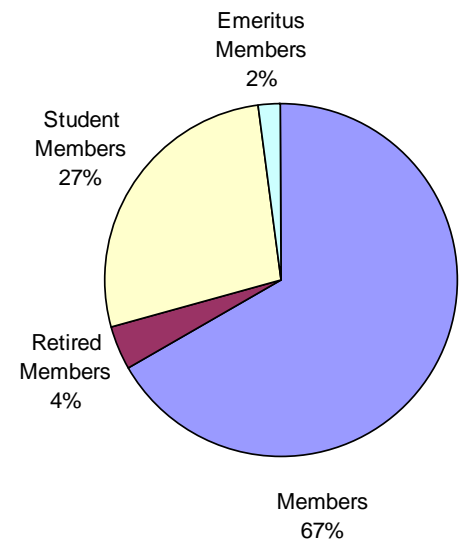
The Montreal section is dynamic in terms of membership. Over the past year it experienced a net loss of 5 in total number reflected in a net gain of 3 Members and a net loss of 7 Student members. The number of new people attracted to the section is encouraging. The student dynamic is obvious in the figures. Efforts to regain the membership levels in 2002 and 2003 might be achievable by recruiting former members to rejoin CORS.

**Membership in the Montreal Section by Member Type
2000-2010**

<i>Member Type</i>	<i>1999-2000</i>	<i>2000-2001</i>	<i>2001-2002</i>	<i>2002-2003</i>	<i>2003-2004</i>	<i>2004-2005</i>	<i>2005-2006</i>	<i>2006-2007</i>	<i>2007-2008</i>	<i>2008-2009</i>	<i>2009-2010</i>
Member	45	40	52	52	35	31	34	29	33	31	34
Retired Member	0	0	0	1	1	2	1	1	1	3	2
Student Member	3	5	27	27	3	13	11	7	18	21	14
Emeritus Member								1	1	1	1
Total	48	45	79	80	39	46	46	38	53	56	51

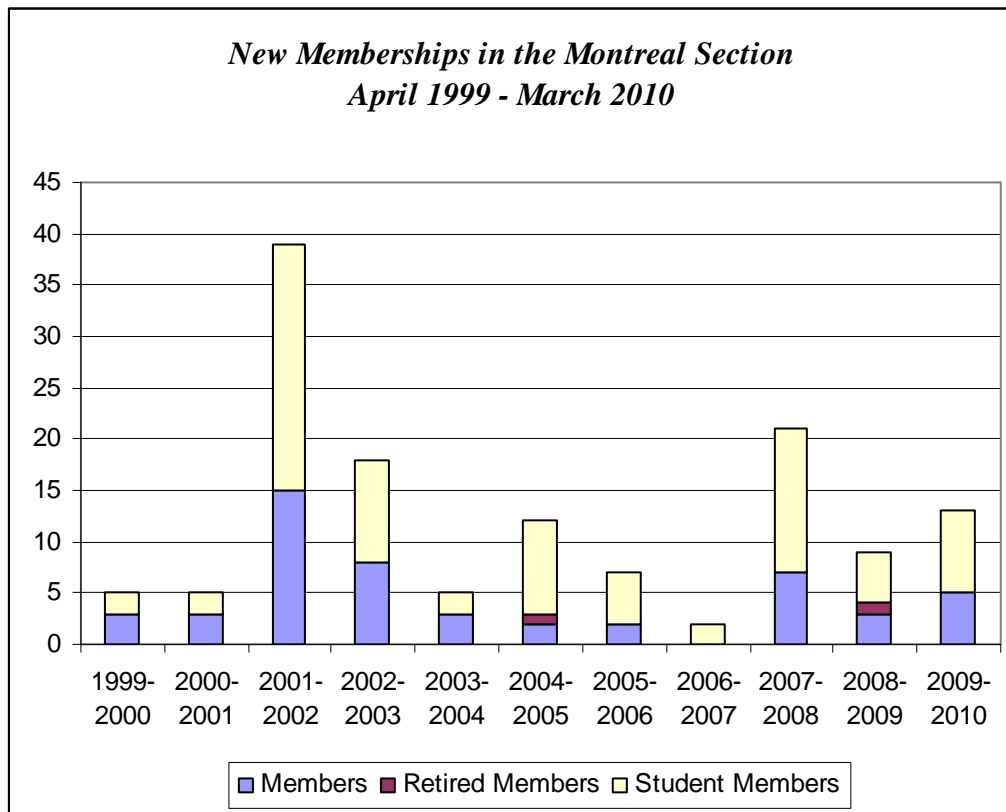


**Percentage Distribution
of Montreal Section
Membership 2010**



***New Memberships in the Montreal Section by Member Type
April 1999 – March 2010***

<i>Member Type</i>	<i>1999-2000</i>	<i>2000-2001</i>	<i>2001-2002</i>	<i>2002-2003</i>	<i>2003-2004</i>	<i>2004-2005</i>	<i>2005-2006</i>	<i>2006-2007</i>	<i>2007-2008</i>	<i>2008-2009</i>	<i>2009-2010</i>
Member	3	3	15	8	3	2	2	0	7	3	5
Retired Member	0	0	0	0	0	1	0	0	0	1	0
Student Member	2	2	24	10	2	9	5	2	14	5	8
Total	5	5	39	18	5	12	7	2	21	9	13



***Discontinued Memberships in the Montreal Section by Member Type
April 2002 – March 2010***

<i>Member Type</i>	<i>2002-2003</i>	<i>2003-2004</i>	<i>2004-2005</i>	<i>2005-2006</i>	<i>2006-2007</i>	<i>2007-2008</i>	<i>2008-2009</i>	<i>2009-2010</i>
Member	7	22	6	0	7	4	5	4
Retired Member	0	0	0	1	0	0	0	1
Student Member	10	18	1	7	3	4	2	13
Total	17	40	7	8	10	8	7	18

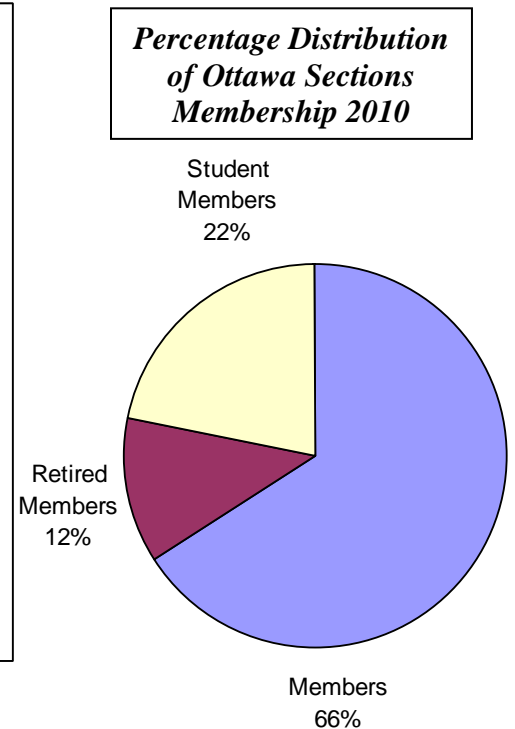
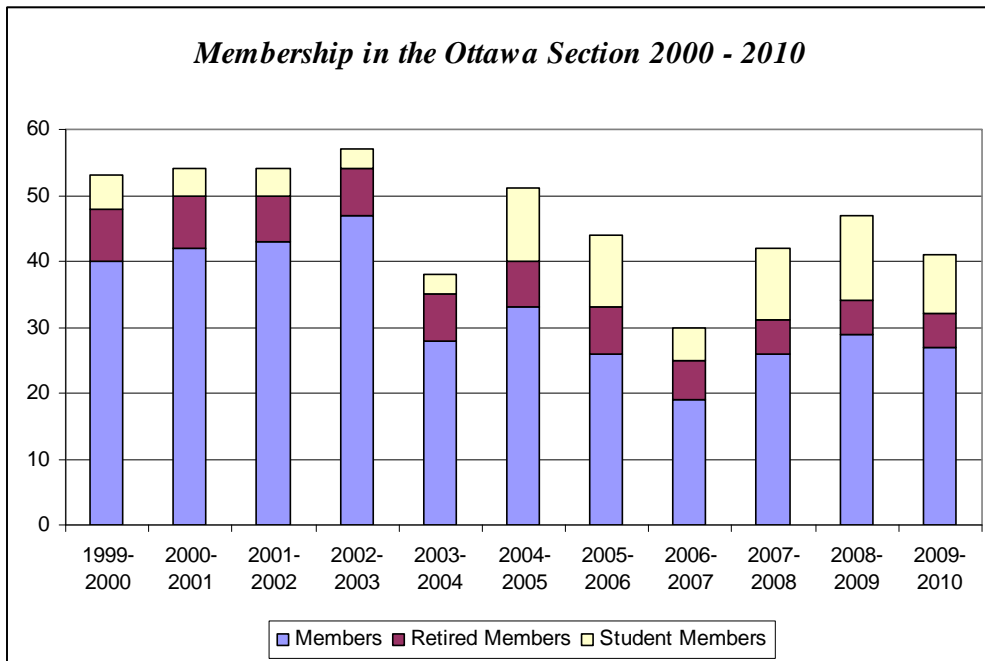
Membership Statistics by Section

Ottawa Section

Membership in the Ottawa section decreased by 6 over the past year with the section experiencing a net loss of 2 Members and 4 Student Members. Despite the decrease in numbers, a rejuvenation of the section is underway with a return to regular section meetings and seminars.

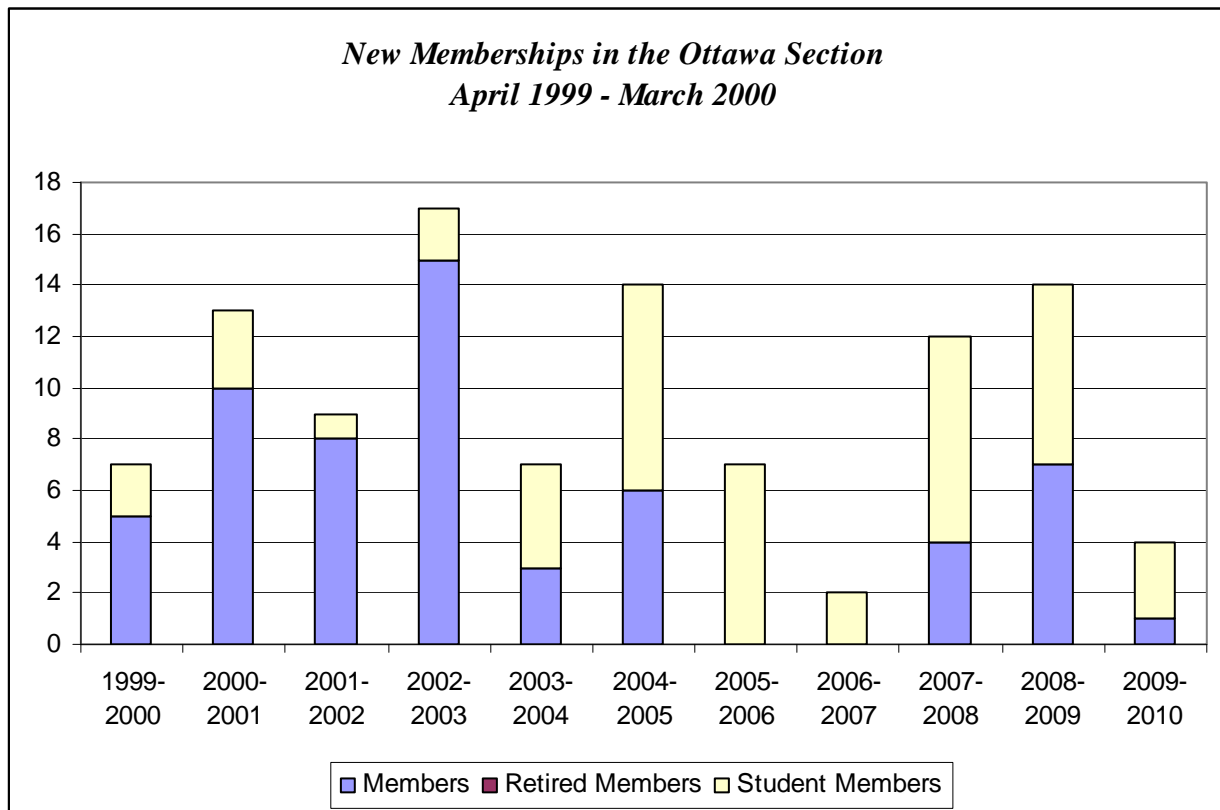
**Membership in the Ottawa Section by Member Type
2000-2010**

<i>Member Type</i>	<i>1999-2000</i>	<i>2000-2001</i>	<i>2001-2002</i>	<i>2002-2003</i>	<i>2003-2004</i>	<i>2004-2005</i>	<i>2005-2006</i>	<i>2006-2007</i>	<i>2007-2008</i>	<i>2008-2009</i>	<i>2009-2010</i>
Member	40	42	43	47	28	33	26	19	26	29	27
Retired Member	8	8	7	7	7	7	7	6	5	5	5
Student Member	5	4	4	3	3	11	11	5	11	13	9
Total	53	54	54	57	38	51	44	30	42	47	41



*New Memberships in the Ottawa Sections by Member Type
April 1999 – March 2010*

<i>Member Type</i>	<i>1999-2000</i>	<i>2000-2001</i>	<i>2001-2002</i>	<i>2002-2003</i>	<i>2003-2004</i>	<i>2004-2005</i>	<i>2005-2006</i>	<i>2006-2007</i>	<i>2007-2008</i>	<i>2008-2009</i>	<i>2009-2010</i>
Member	5	10	8	15	3	6	0	0	4	7	1
Retired Member	0	0	0	0	0	0	0	0	0	0	0
Student Member	2	3	1	2	4	8	7	2	8	7	3
Total	7	13	9	17	7	14	7	2	12	14	4



*Discontinued Memberships in the Ottawa Sections by Member Type
April 2002 – March 2010*

<i>Member Type</i>	<i>2002-2003</i>	<i>2003-2004</i>	<i>2004-2005</i>	<i>2005-2006</i>	<i>2006-2007</i>	<i>2007-2008</i>	<i>2008-2009</i>	<i>2009-2010</i>
Member	11	20	3	7	5	2	3	5
Retired Member	0	0	0	1	1	1	0	0
Student Member	3	2	0	8	8	2	6	5
Total	11	20	3	7	14	5	9	10

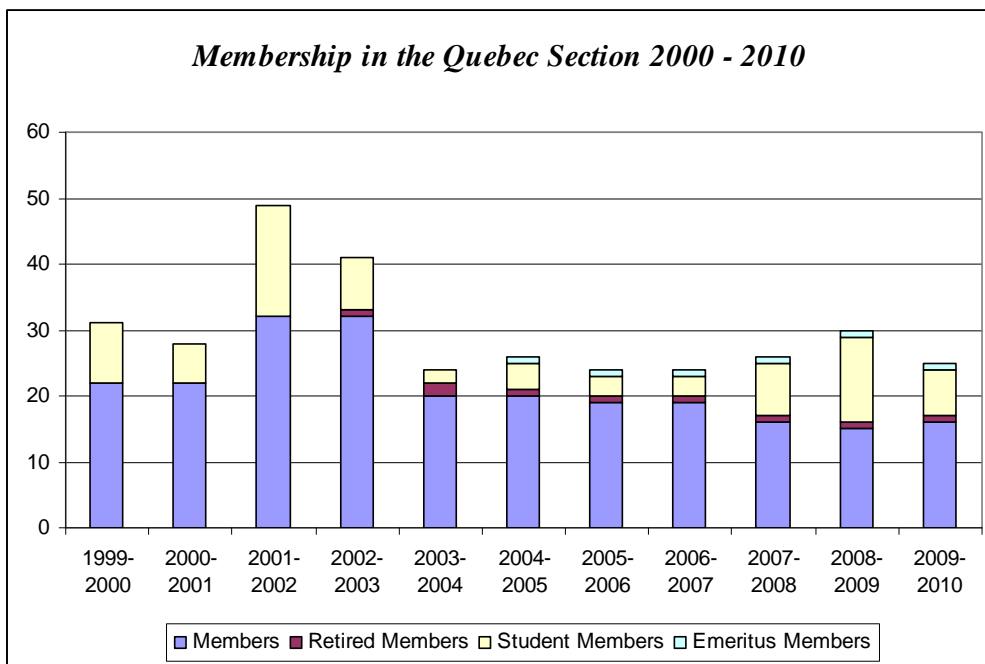
Membership Statistics by Section

Quebec Section

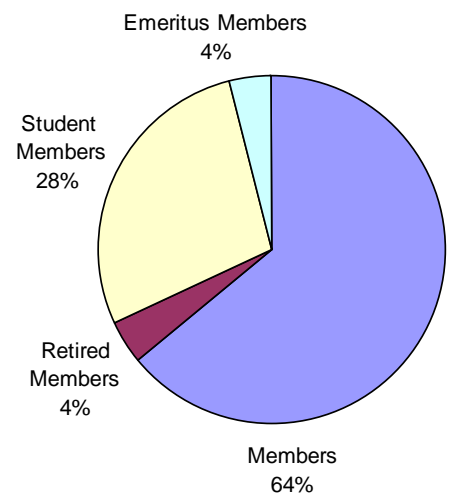
Over the past few years, the Quebec section has been growing due in large part to an increase in the number of students joining the section. This stopped in 2009-2010 when the section experienced a net loss of 6 Student members. Although it increased by 1 this year, the total number of Members in the Quebec section remains at one of its lowest levels in ten years. The CORS Diploma appears to be an incentive to attracting Student Members to join this section as witnessed by the increase in the number of diplomas issued to students attending the Université Laval in the 2007 and 2008 membership years. Efforts on the part of the Diploma Coordinator to promote the program should continue.

**Membership in the Quebec Section by Member Type
2000-2010**

<i>Member Type</i>	<i>1999-2000</i>	<i>2000-2001</i>	<i>2001-2002</i>	<i>2002-2003</i>	<i>2003-2004</i>	<i>2004-2005</i>	<i>2005-2006</i>	<i>2006-2007</i>	<i>2007-2008</i>	<i>2008-2009</i>	<i>2009-2010</i>
Member	22	22	32	32	20	20	19	19	16	15	16
Retired Member	0	0	0	1	2	1	1	1	1	1	1
Student Member	9	6	17	8	2	4	3	3	8	13	7
Emeritus Member						1	1	1	1	1	1
Total	31	28	49	41	24	26	24	24	26	30	25

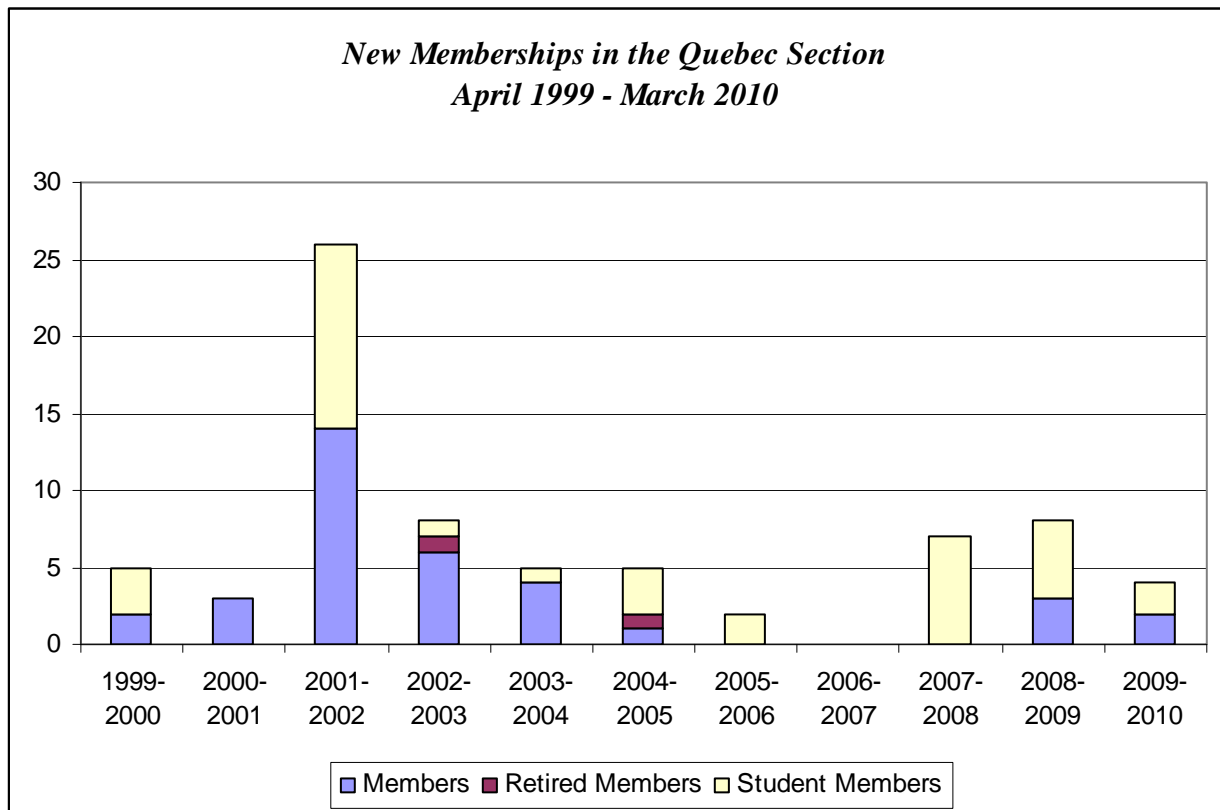


**Percentage Distribution
of Quebec Section
Membership 2010**



*New Memberships in the Quebec Section by Member Type
April 1999 – March 2010*

<i>Member Type</i>	<i>1999-2000</i>	<i>2000-2001</i>	<i>2001-2002</i>	<i>2002-2003</i>	<i>2003-2004</i>	<i>2004-2005</i>	<i>2005-2006</i>	<i>2006-2007</i>	<i>2007-2008</i>	<i>2008-2009</i>	<i>2009-2010</i>
Member	2	3	14	6	4	1	0	0	0	3	2
Retired Member	0	0	0	1	0	1	0	0	0	0	0
Student Member	3	0	12	1	1	3	2	0	7	5	2
Total	5	3	26	8	5	5	2	0	7	8	4



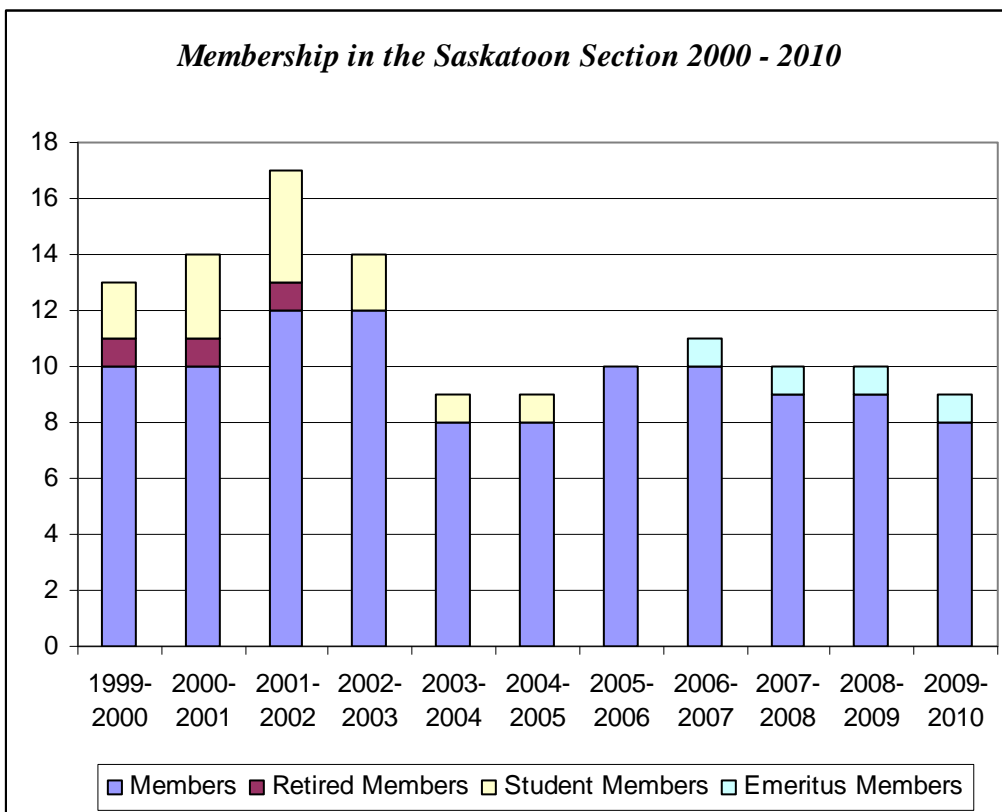
*Discontinued Memberships in the Quebec Section by Member Type
April 2002 – March 2009*

<i>Member Type</i>	<i>2002-2003</i>	<i>2003-2004</i>	<i>2004-2005</i>	<i>2005-2006</i>	<i>2006-2007</i>	<i>2007-2008</i>	<i>2008-2009</i>	<i>2009-2010</i>
Member	7	14	3	2	0	2	4	3
Retired Member	0	0	0	0	0	0	0	0
Student Member	7	7	0	2	0	2	1	7
Total	14	21	3	4	0	4	5	10

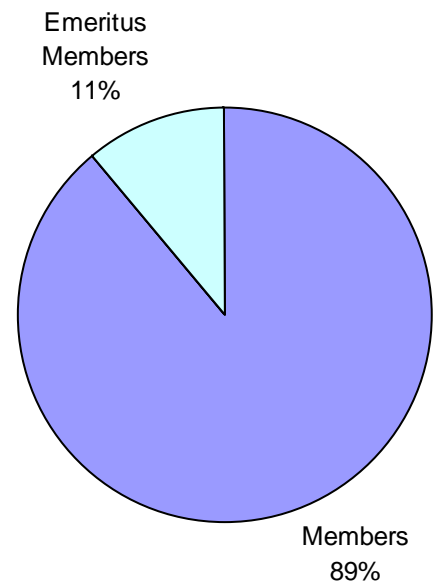
Membership in the Saskatoon section decreased by 1 over the past year when a Member decided not to renew his membership. For the fifth consecutive year, the section has no Student Members. No Diplomas have been issued to students at the University of Saskatchewan since 2002 and there is currently no Diploma Coordinator at the institution.

**Membership in the Saskatoon Section by Member Type
2000-2010**

<i>Member Type</i>	<i>1999-2000</i>	<i>2000-2001</i>	<i>2001-2002</i>	<i>2002-2003</i>	<i>2003-2004</i>	<i>2004-2005</i>	<i>2005-2006</i>	<i>2006-2007</i>	<i>2007-2008</i>	<i>2008-2009</i>	<i>2009-2010</i>
Member	10	10	12	12	8	8	10	10	9	9	8
Retired Member	1	1	1	0	0	0	0	0	0	0	0
Student Member	2	3	4	2	1	1	0	0	0	0	0
Emeritus Member								1	1	1	1
Total	13	14	17	14	9	9	10	11	10	10	9

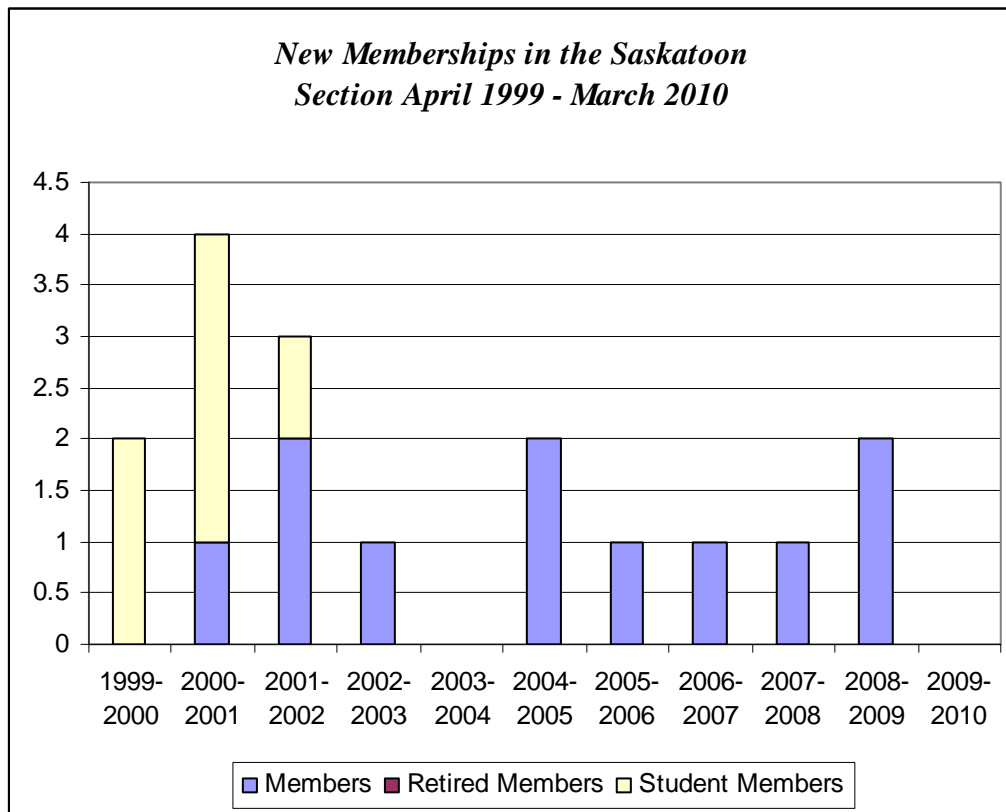


**Percentage Distribution
of Saskatoon Section
Membership 2010**



*New Memberships in the Saskatoon Section by Member Type
April 1999 – March 2010*

<i>Member Type</i>	<i>1999-2000</i>	<i>2000-2001</i>	<i>2001-2002</i>	<i>2002-2003</i>	<i>2003-2004</i>	<i>2004-2005</i>	<i>2005-2006</i>	<i>2006-2007</i>	<i>2007-2008</i>	<i>2008-2009</i>	<i>2009-2010</i>
Member	0	1	2	1	0	2	1	1	1	2	0
Retired Member	0	0	0	0	0	0	0	0	0	0	0
Student Member	2	3	1	0	0	0	0	0	0	0	0
Total	2	4	3	1	0	2	1	1	1	2	0



*Discontinued Memberships in the Saskatoon Section by Member Type
April 2002 – March 2008*

<i>Member Type</i>	<i>2002-2003</i>	<i>2003-2004</i>	<i>2004-2005</i>	<i>2005-2006</i>	<i>2006-2007</i>	<i>2007-2008</i>	<i>2008-2009</i>	<i>2009-2010</i>
Member	1	4	1	0	1	2	1	1
Retired Member	1	0	0	0	0	0	0	0
Student Member	2	1	0	0	0	0	0	0
Total	4	5	1	0	1	2	1	1

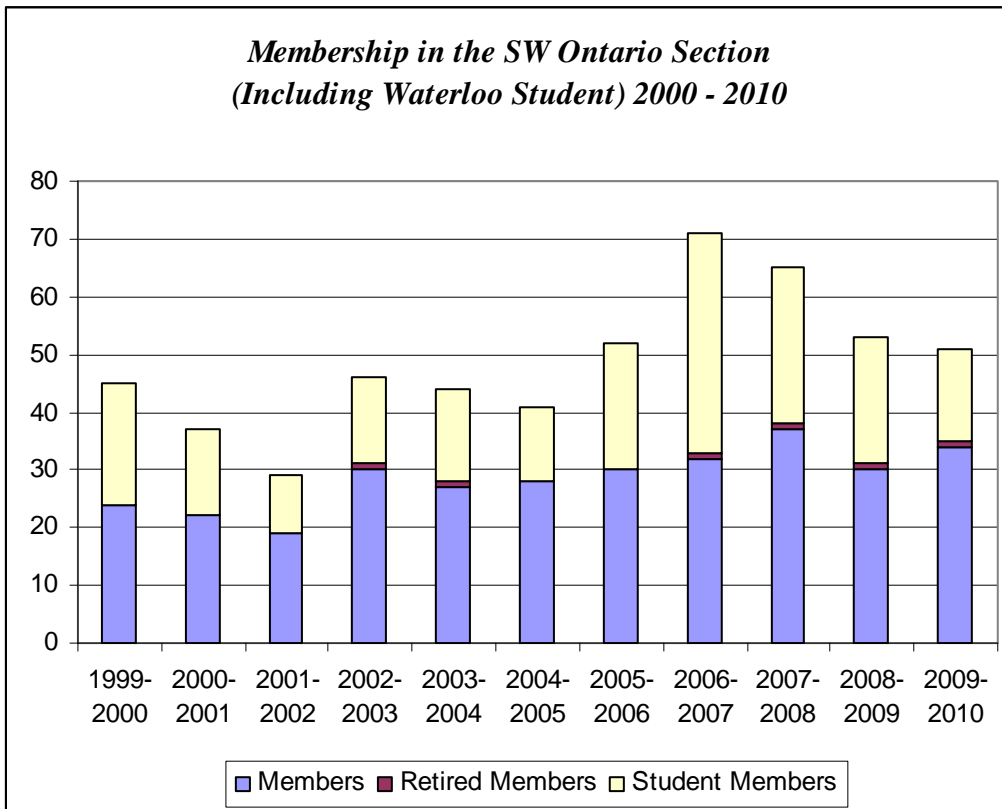
Membership Statistics by Section

SW Ontario (including Waterloo Student) Section

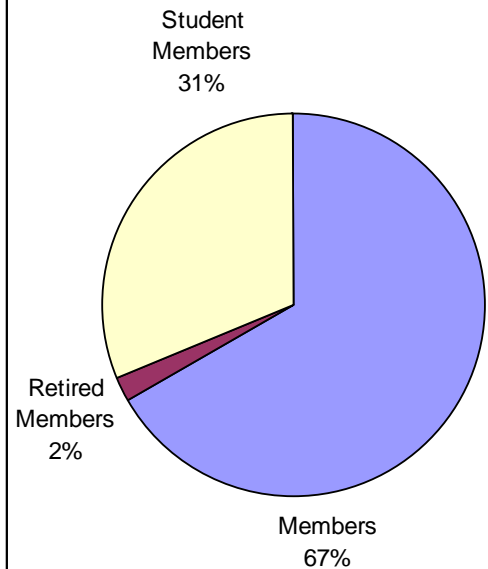
Over the past year, this section has experienced a net loss in membership of 2 reflected in a net gain in Members of 4 and a net decrease in Student members of 6. All of the Student members in SW Ontario (110%) are currently associated with the Waterloo Student section. This is a reversal from only a few years ago when Waterloo Students accounted for less than a quarter of the Students in the SW Ontario section.

**Membership in the SW Ontario Section (Including Waterloo Student) by Member Type
2000-2010**

<i>Member Type</i>	<i>1999-2000</i>	<i>2000-2001</i>	<i>2001-2002</i>	<i>2002-2003</i>	<i>2003-2004</i>	<i>2004-2005</i>	<i>2005-2006</i>	<i>2006-2007</i>	<i>2007-2008</i>	<i>2008-2009</i>	<i>2009-2010</i>
Member	24	22	19	30	27	28	30	32	37	30	34
Retired Member	0	0	0	1	1	0	0	1	1	1	1
Student Member	21	15	10	15	16	13	22	38	27	22	16
Total	45	37	29	46	44	41	52	71	65	53	51

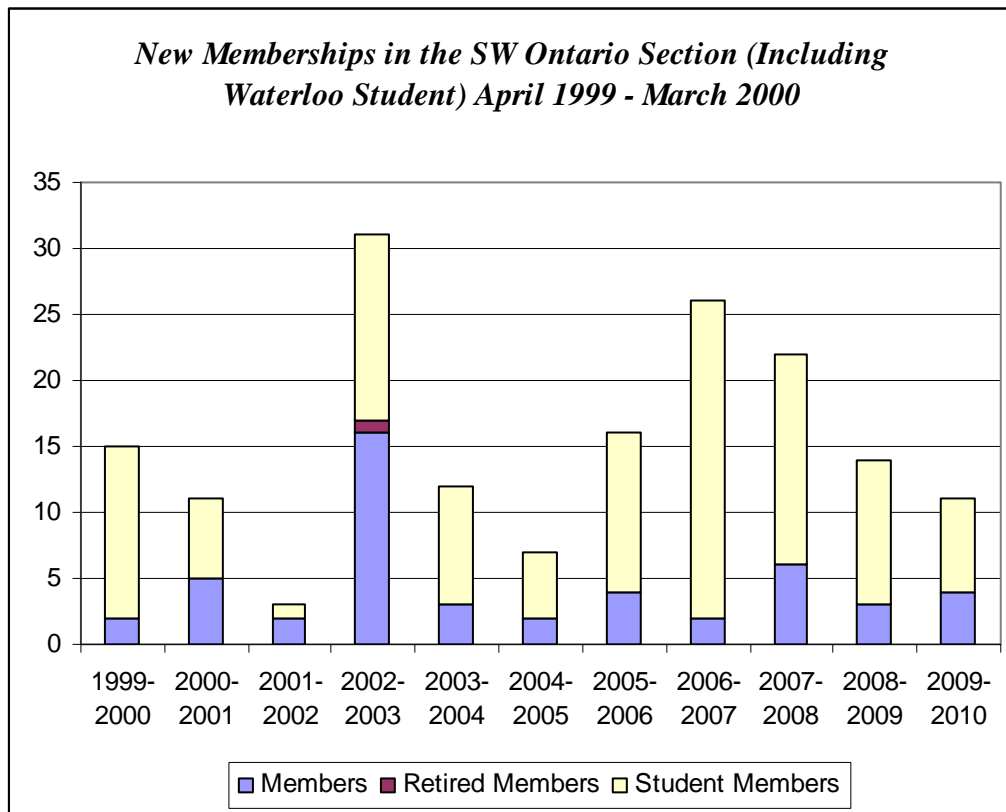


**Percentage Distribution
of SW Ontario Section
Membership (Including
Waterloo Student) 2010**



***New Memberships in the SW Ontario Section (Including Waterloo Student) by Member Type
April 1999 – March 2010***

<i>Member Type</i>	<i>1999-2000</i>	<i>2000-2001</i>	<i>2001-2002</i>	<i>2002-2003</i>	<i>2003-2004</i>	<i>2004-2005</i>	<i>2005-2006</i>	<i>2006-2007</i>	<i>2007-2008</i>	<i>2008-2009</i>	<i>2009-2010</i>
Member	2	5	2	16	3	2	4	2	6	3	4
Retired Member	0	0	0	1	0	0	0	0	0	0	0
Student Member	13	6	1	14	9	5	12	25	16	11	7
Total	15	11	3	31	12	7	16	27	32	14	11



***Discontinued Memberships in the SW Ontario Section (Including Waterloo Student) by Member Type
April 2002 – March 2010***

<i>Member Type</i>	<i>2002-2003</i>	<i>2003-2004</i>	<i>2004-2005</i>	<i>2005-2006</i>	<i>2006-2007</i>	<i>2007-2008</i>	<i>2008-2009</i>	<i>2009-2010</i>
Member	2	1	2	5	1	4	10	1
Retired Member	0	0	0	0	0	0	0	0
Student Member	4	3	13	6	7	27	10	10
Total	6	4	15	11	8	31	20	11

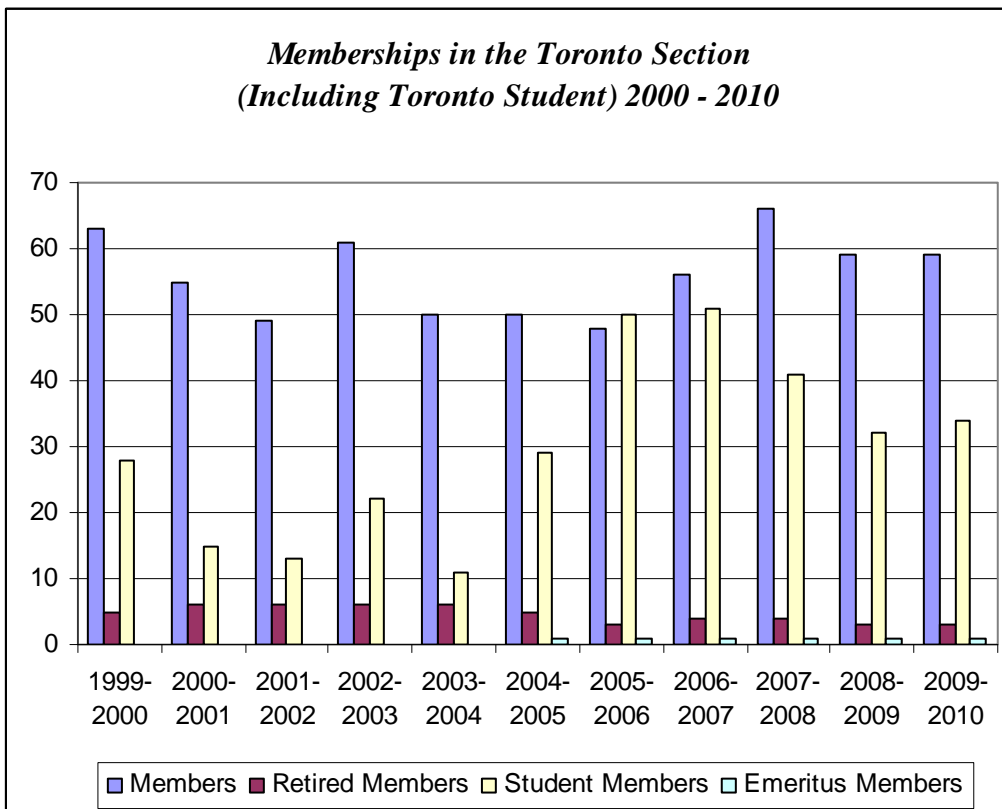
Membership Statistics by Section

Toronto and Toronto Student Sections

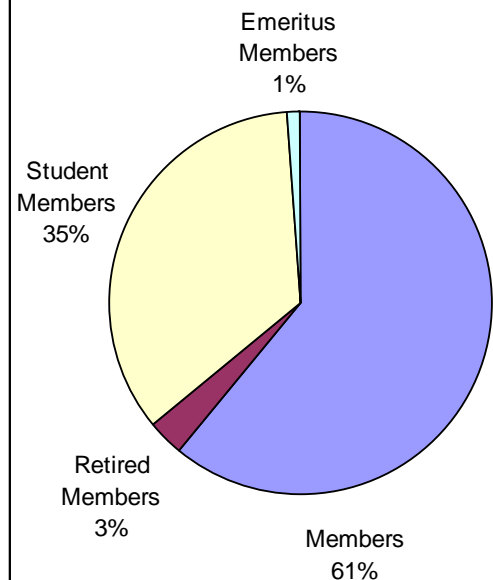
In 2009-2010, the Society's largest Section experienced an increase in membership of 2. The number of Members remains unchanged from last year with the student population increasing by 2. While new Members continue to join the section (8) a greater number are deciding not to retain their memberships.

**Membership in the Toronto Sections by Member Type
2000-2010**

Member Type	1999-2000	2000-2001	2001-2002	2002-2003	2003-2004	2004-2005	2005-2006	2006-2007	2007-2008	2008-2009	2009-2010
Member	63	55	49	61	50	50	48	56	66	59	59
Retired Member	5	6	6	6	6	5	3	4	4	3	3
Student Member	28	15	13	22	11	29	50	51	41	32	34
Emeritus Member						1	1	1	1	1	1
Total	96	76	68	88	67	85	102	112	112	95	97

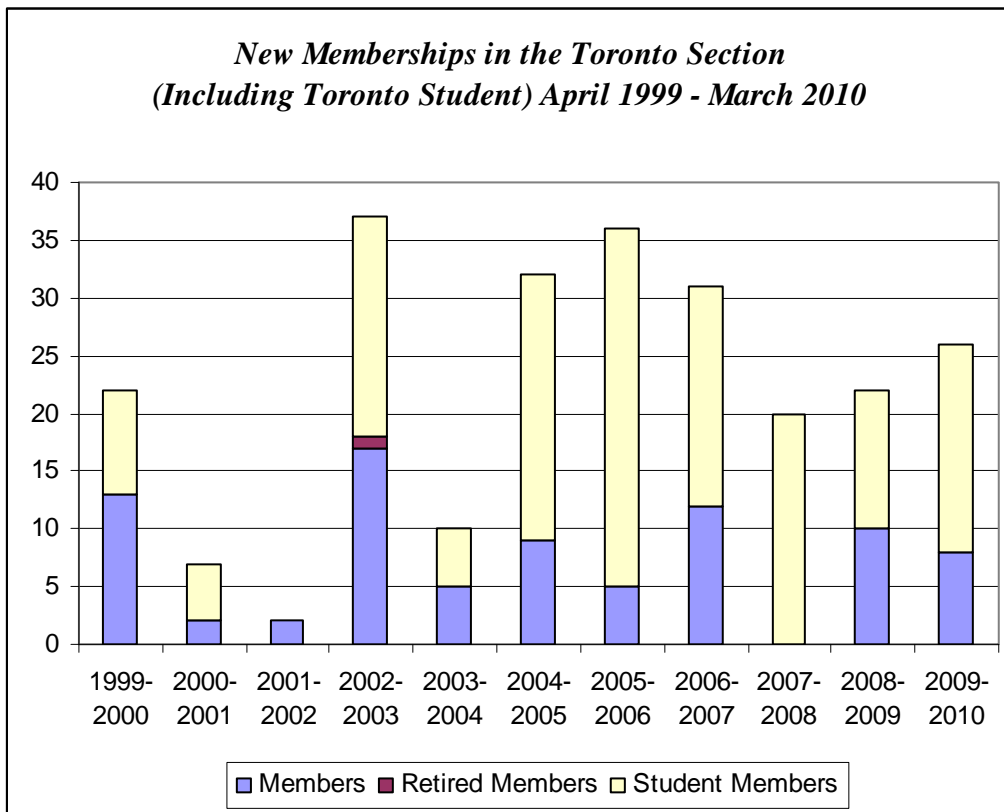


**Percentage Distribution
of Toronto Sections
Membership 2010**



*New Memberships in the Toronto Sections by Member Type
April 1999 – March 2010*

<i>Member Type</i>	<i>1999-2000</i>	<i>2000-2001</i>	<i>2001-2002</i>	<i>2002-2003</i>	<i>2003-2004</i>	<i>2004-2005</i>	<i>2005-2006</i>	<i>2006-2007</i>	<i>2007-2008</i>	<i>2008-2009</i>	<i>2009-2010</i>
Member	13	2	2	17	5	9	5	10	14	10	8
Retired Member	0	0	0	1	0	0	0	0	0	0	0
Student Member	9	5	0	19	5	23	31	19	20	12	18
Total	22	7	2	37	10	32	36	29	34	22	26



*Discontinued Memberships in the Toronto Sections by Member Type
April 2002 – March 2010*

<i>Member Type</i>	<i>2002-2003</i>	<i>2003-2004</i>	<i>2004-2005</i>	<i>2005-2006</i>	<i>2006-2007</i>	<i>2007-2008</i>	<i>2008-2009</i>	<i>2009-2010</i>
Member	10	21	6	8	8	10	15	11
Retired Member	1	0	1	2	0	0	1	0
Student Member	12	16	7	14	16	28	19	15
Total	22	37	14	24	24	38	35	26

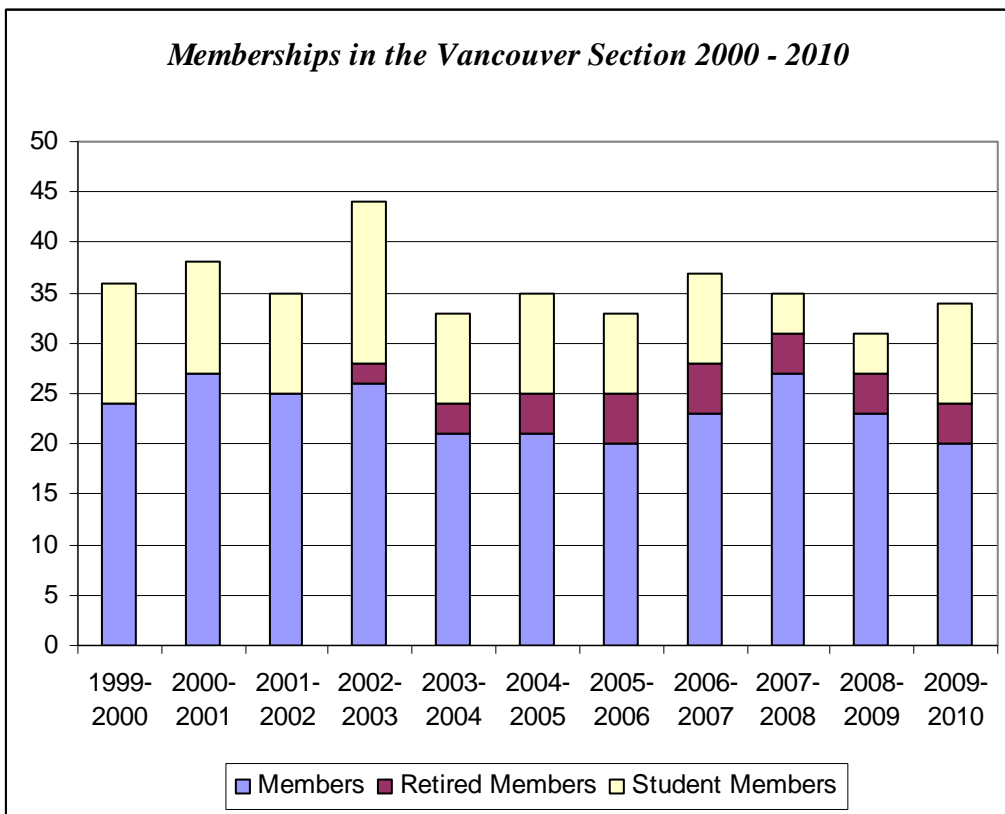
Membership Statistics by Section

Vancouver Section

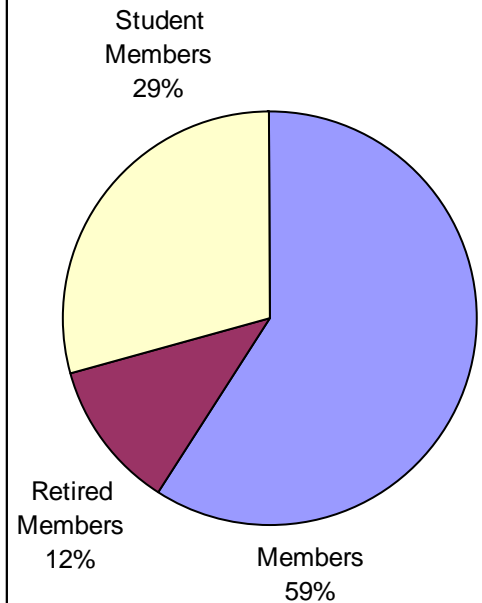
Last year, the Vancouver section experienced a net increase in membership of 3: a net loss of 3 Members and a net gain of 6 students. In contrast to other sections with a Student member component, Vancouver did not lose any of its students.

**Membership in the Vancouver Section by Member Type
2000-2010**

<i>Member Type</i>	<i>1999-2000</i>	<i>2000-2001</i>	<i>2001-2002</i>	<i>2002-2003</i>	<i>2003-2004</i>	<i>2004-2005</i>	<i>2005-2006</i>	<i>2006-2007</i>	<i>2007-2008</i>	<i>2008-2009</i>	<i>2009-2010</i>
Member	24	27	25	26	21	21	20	23	27	23	20
Retired Member	0	0	0	2	3	4	5	5	4	4	4
Student Member	12	11	10	16	9	10	8	9	4	4	10
Total	36	38	35	44	33	35	33	37	35	31	34

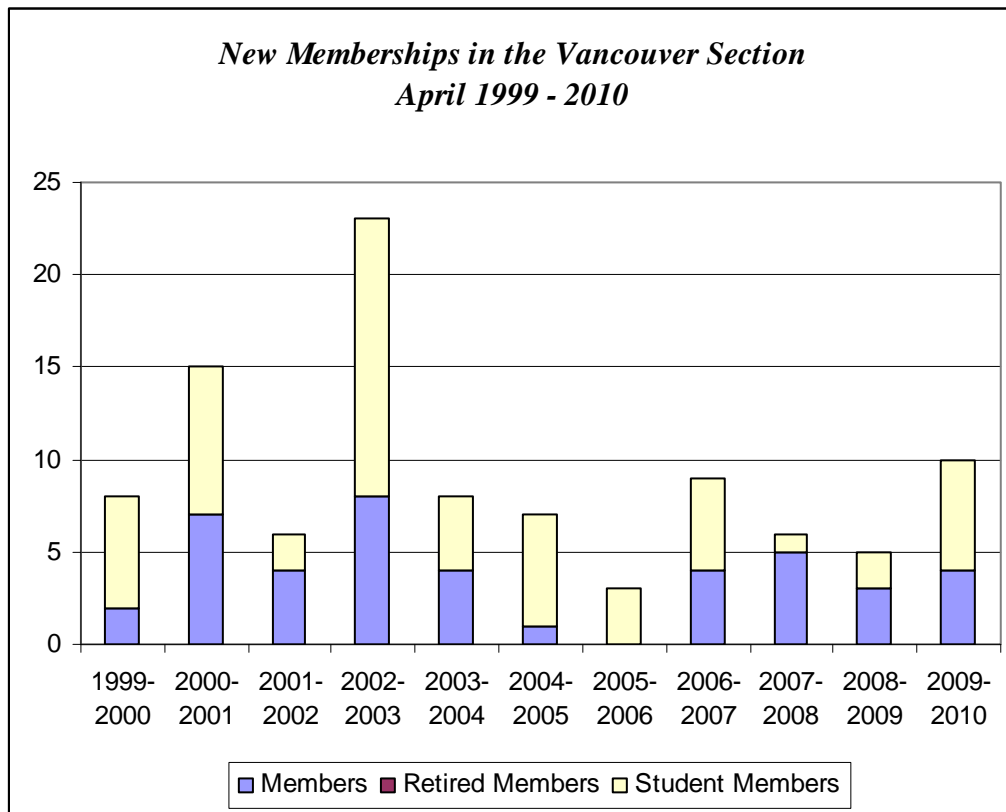


**Percentage Distribution
of Section Membership
2010**



***New Memberships in the Vancouver Section by Member Type
April 1999 – March 2010***

<i>Member Type</i>	<i>1999-2000</i>	<i>2000-2001</i>	<i>2001-2002</i>	<i>2002-2003</i>	<i>2003-2004</i>	<i>2004-2005</i>	<i>2005-2006</i>	<i>2006-2007</i>	<i>2007-2008</i>	<i>2008-2009</i>	<i>2009-2010</i>
Member	2	7	4	8	4	1	0	4	5	3	4
Retired Member	0	0	0	0	0	0	0	0	0	0	0
Student Member	6	8	2	15	4	6	3	5	1	2	6
Total	8	15	6	23	8	7	3	9	6	5	10



***Discontinued Memberships in the Vancouver Section by Member Type
April 2002 – March 2010***

<i>Member Type</i>	<i>2002-2003</i>	<i>2003-2004</i>	<i>2004-2005</i>	<i>2005-2006</i>	<i>2006-2007</i>	<i>2007-2008</i>	<i>2008-2009</i>	<i>2009-2010</i>
Member	6	10	2	2	4	3	7	7
Retired Member	0	0	0	0	2	2	0	0
Student Member	9	10	4	4	5	4	6	0
Total	15	20	6	6	11	9	13	7

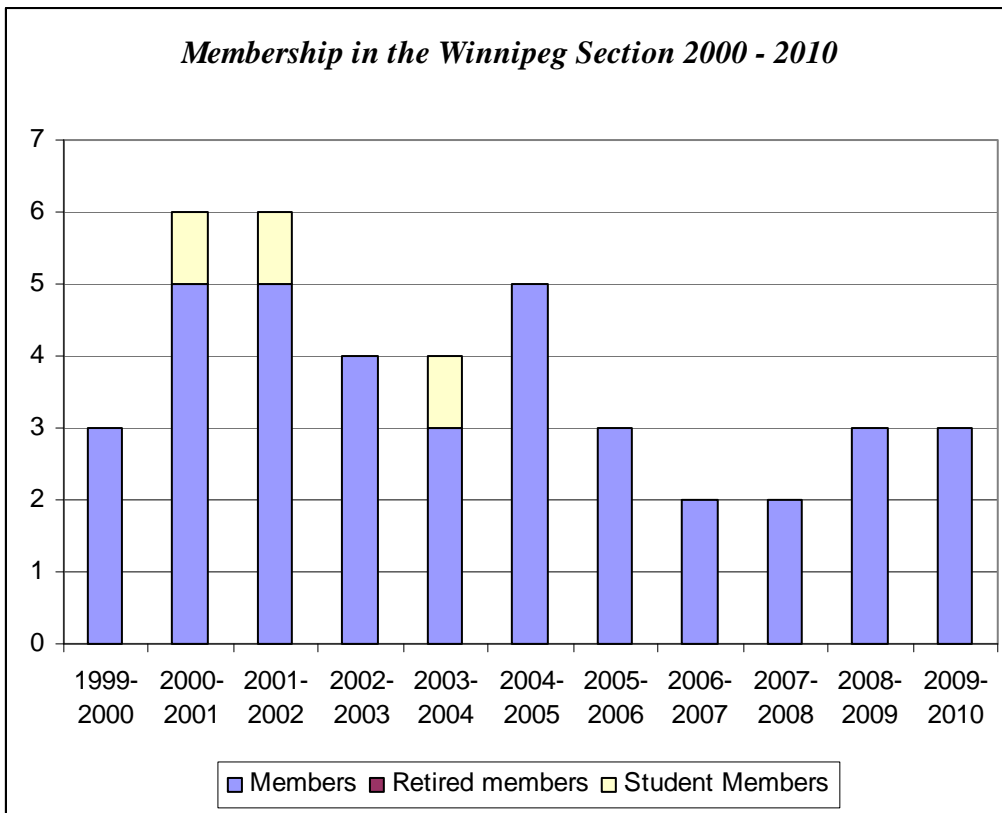
Membership Statistics by Section

Winnipeg

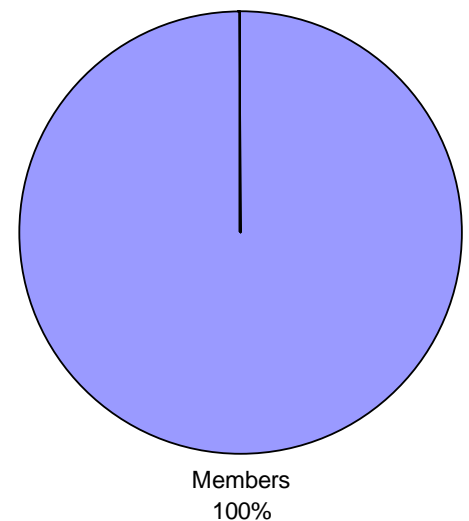
The Winnipeg remains the smallest section in the Society with only three Members. Its membership has never exceeded 6. It has not had any Student Members for the past six years.

**Membership in the Winnipeg Section by Member Type
2000-2010**

<i>Member Type</i>	<i>1999-2000</i>	<i>2000-2001</i>	<i>2001-2002</i>	<i>2002-2003</i>	<i>2003-2004</i>	<i>2004-2005</i>	<i>2005-2006</i>	<i>2006-2007</i>	<i>2007-2008</i>	<i>2008-2009</i>	<i>2009-2010</i>
Member	3	5	5	4	3	5	3	2	2	3	3
Retired Member	0	0	0	0	0	0	0	0	0	0	0
Student Member	0	1	1	0	1	0	0	0	0	0	0
Total	3	6	6	4	4	5	3	2	2	3	3



**Percentage Distribution
of Winnipeg Section
Membership 2009**



*New Memberships in the Winnipeg Section by Member Type
April 1999 – March 2010*

<i>Member Type</i>	<i>1999-2000</i>	<i>2000-2001</i>	<i>2001-2002</i>	<i>2002-2003</i>	<i>2003-2004</i>	<i>2004-2005</i>	<i>2005-2006</i>	<i>2006-2007</i>	<i>2007-2008</i>	<i>2008-2009</i>	<i>2009-2010</i>
Member	0	1	2	1	0	4	0	0	0	1	0
Retired Member	0	0	0	0	0	0	0	0	0	0	0
Student Member	0	0	1	0	1	0	0	0	0	0	0
Total	0	1	3	1	1	4	0	0	0	1	0

*Discontinued Memberships in the Winnipeg Section by Member Type
April 2002 – March 2010*

<i>Member Type</i>	<i>2002-2003</i>	<i>2003-2004</i>	<i>2004-2005</i>	<i>2005-2006</i>	<i>2006-2007</i>	<i>2007-2008</i>	<i>2008-2009</i>	<i>2009-2010</i>
Member	1	1	2	1	1	0	0	0
Retired Member	0	0	0	0	0	0	0	0
Student Member	0	0	1	0	0	0	0	0
Total	1	1	3	1	1	0	0	0