

Wendy L. Caron
3661 Charlevoix Avenue
Windsor, Ontario, Canada N9E 3B4
(519) 966-5254 / caronwendyl@sympatico.ca

May 1, 2009

Corinne MacDonald
Interim CORS Secretary
Department of Industrial Engineering
Dalhousie University
Halifax, NS B3J 2X4

Dear Corinne,

**RE: Canadian Operational Research Society
Annual Membership Report 2008-2009**

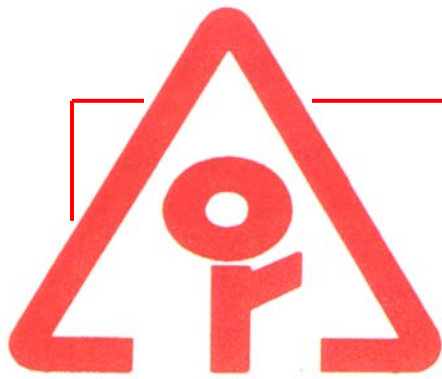
I am pleased to submit for the consideration of CORS Council a copy of the 2008-2009 Annual Membership Report for the Canadian Operational Research Society which documents the membership activity experienced by the Society over the past year. The report provides Council with the information it needs to assess the health and well-being of the Society; to monitor the effectiveness of membership processes and practices; and to identify areas where policy initiatives or changes may be required.

This report reveals that despite experiencing a decrease in total membership last year, the Canadian Operational Research Society remains vital and continues to fulfil its mandate of promoting and safeguarding the existence of an OR community in Canada. Observed trends, however, identify that the recruitment and retention of new members does continue to be of concern. Suggested initiatives in this regard are provided in the Executive Summary.

Yours truly,



Wendy L. Caron
CORS Membership Services



CORS-SCRO

Annual Membership Report

2008-2009

Canadian Operational
Research Society

Société canadienne
de recherche
opérationnelle

Prepared by
Wendy L. Caron
CORS Membership Services
3661 Charlevoix Avenue
Windsor, Ontario, Canada N9E 3B4
(519) 966-5254 / caronwendyl@sympatico.ca

	<i>Page</i>
Part 1: Introduction and Executive Summary	1
Part 2: Overview of Membership	5
Overall	5
Membership by Member Type	5
Membership by Section	7
Membership by Section and Member Type	11
Duration of Membership	13
Part 3: New Memberships	16
Overall	16
New Memberships by Member Type	16
New Memberships by Section	17
New Memberships by Section and Member Type	19
Related Miscellaneous Observations	21
Part 4: Discontinued Memberships	22
Overall	22
Discontinued Memberships by Member Type	22
Discontinued Memberships by Section	23
Discontinued Memberships by Section and Member Type	23
Duration of Cancelled CORS Memberships	23
Part 5: Payment Status of Membership	26
Overall	26
Method of Payment	26
Part 6: Membership Statistics by Section	29
Atlantic Section	29
Calgary Section	31
Edmonton Section	33
International Section	35
Kingston Section	37
Montreal Section	39
Ottawa and Ottawa Student Sections	41
Quebec Section	43
Saskatoon	45
SW Ontario (including Waterloo Student) Section	47
Toronto and Toronto Student Sections	49
Vancouver and Vancouver Student Sections	51
Winnipeg Section	53

List of Tables

Table 1: CORS Membership 1998-2009	5
Table 2: CORS Membership by Member Type 2000-2000	6
Table 3: Percentage Distribution of CORS Membership by Member Type 2000-2009	7
Table 4: CORS Membership by Section 2000-2009	7

Table of Contents

Table 5: CORS Membership by Section and Member Type March 31, 2009	11
Table 6: Percentage Distribution of CORS Membership by Section and Member Type, March 31, 2009	11
Table 7: CORS Membership by Duration of Membership in the Society as of March 31, 2009	13
Table 8: New CORS Memberships 1998-2009	16
Table 9: New CORS Memberships by Member Type 2001-2009	17
Table 10: New CORS Memberships by Section 2001-2009	17
Table 11: New CORS Memberships in the 2008-2009 Membership Year By Section and Member Type	21
Table 12: Requests for a Paper Copy of the CORS-SCRO Bulletin by New CORS Members	21
Table 13: Discontinued CORS Memberships 2001-2009	22
Table 14: Discontinued CORS Memberships by Member Type 2003-2009	22
Table 15: Discontinued CORS Memberships by Section 2001-2009	23
Table 16: Discontinued CORS Memberships in the 2008-2009 Membership Year By Section and Member Type	24
Table 17: Duration of Memberships Cancelled in 2008-2009 Membership Year	24
Table 18: Payment Status of CORS Membership by Section March 31, 2009	26
Table 19: Method of Payment of Transactions Conducted in the 2008-2009 Membership Year	28

List of Graphs

Graph 1: CORS Membership 1998-2009	6
Graph 2: CORS Membership by Member Type 2000-2009	8
Graph 3: Percentage Distribution of CORS Membership by Section March 31, 2009	9
Graph 4: CORS Membership by Section 2000-2009	10
Graph 5: CORS Membership by Section and Member Type March 31, 2009	12
Graph 6: Percentage Distribution of CORS Membership by Duration of Membership in the Society as of March 31, 2009	14
Graph 7: Comparison of CORS Memberships by Duration of Membership 2006, 2007, 2008 and 2009	15
Graph 8: New CORS Memberships by Member Type 2000-2009	18
Graph 9: Percentage Distribution of New CORS Memberships by Section for the 2008-2009 Membership Year	19
Graph 10: New CORS Memberships in the 2008-2009 Membership Year by Section and Member Type	20
Graph 11: Discontinued CORS Memberships in the 2008-2009 Membership Year by Section and Member Type	25
Graph 12: Payment Status of CORS Membership by Section as of March 31, 2009	27

Part 1: Introduction and Executive Summary

This report documents the membership activity experienced by the Canadian Operational Research Society over the past year and provides Council with the information it needs to assess the health and well-being of the Society; to monitor the effectiveness of its membership processes and practices; and to identify areas where policy initiatives or changes may be required. It also presents information on other membership related matters falling within the purview of the Membership Services provider.

The report is organized into six parts as follows:

Part 1 is this Introduction and Executive Summary.

Part 2 provides an overview of the CORS membership including information and graphs on its distribution by member type and section.

Part 3 examines new membership activity experienced by the Society over the past year.

Part 4 details memberships discontinued by the Society.

Part 5 reviews the payment status of the membership at the commencement of the 2009-2010 membership year. Information pertaining to method of payment and method of contact is also presented.

Part 6 provides a comprehensive snapshot of the membership within each local section of CORS. For ease of reporting and to present a consistent representation of sections, Student sections have been combined with their associated area section.

It should be noted that the information presented in this report has been compiled on the basis of the CORS' membership year, April 1 – March 31 of the next year, and not the calendar year. Also, a close examination of the figures in Parts II, III, and IV may reveal some apparent inaccuracies in the net gain and/or loss of memberships in some sections. This is accounted for by reinstated memberships, members changing membership categories, and members transferring from one section to another. The margin of error is not, however, considered significant enough to discount or invalidate the analysis of the figures.

- At the end of the 2008-2009 membership year total membership in the Canadian Operational Research Society was 444 of which 291 or 66% were Members, 18 or 4% Retired Members, 128 or 29% Student Members, and 7 or 2% Emeritus Members.
- Over the past year, more people left the Society than joined with CORS experiencing a decrease in total membership of 18.
- The decrease in membership is primarily attributed to a decrease in the number of Members in the Society which declined from 310 in 2008 to 291 in 2009, a decrease of 19. The number of Retired members increased by 1 and the total number of Student members remained unchanged.
- The Toronto Section constitutes the largest section in the Society with 95 members or 21% of total membership. The next largest section is Montreal with 56 members or 13% of the membership followed closely by SW Ontario with a total of 53 members (12%).
- While retaining its position as the largest section, Toronto experienced the largest decline in membership in the 2008-2009 year with membership decreasing from 112 to 95, a loss of 17 members. For the third consecutive year, the SW Ontario section experienced a decreased in size of 12 members, from 65 to 53, causing the section to relinquish its status as the second largest section to Montreal.
- The Edmonton section experienced the most growth in membership over the past year, growing by 7 members and rebounding from a corresponding loss in the previous year. The current number of members (20) is still significantly less than the membership level of 58 in 2003 when the section was the fourth largest in the Society.
- Membership in the Ottawa section continues to increase. The addition of 5 new members over the past year returns membership levels to levels in the mid 2000's when the section was vital and met regularly. A rejuvenation of the section is underway.
- Three sections are at their lowest membership levels in ten years – Atlantic at 30 members, Calgary at 24 and Vancouver at 31. Membership levels in the Atlantic and Calgary sections remain unchanged from last year.
- The section with the most CORS Members is Toronto with 59 or 20% of the Members in the Society. Montreal is the next largest section in terms of Members with 31 (12%) but it only has a slight advantage over the SW Ontario, Ottawa and International sections which all have 10% of the number of Members.
- While Toronto remains the section with the largest number of Student Members at 32 or 25% of the student membership, student membership in the section actually decreased by 9 over the past year. SW Ontario section (excluding Waterloo Student) also experienced a significant decrease in student membership losing 7 Student Members reducing the number to 2 in the section (both at UWO and both currently in arrears).
- Student membership increased the most in the Edmonton section growing from 4 to 10. Other sections experiencing an increase in the number of Student Members were Quebec (5), Montreal (3) and Waterloo Student (2).
- Thirty-seven (37%) of the current membership (161) has been in the Society for two years or less. The number of members who have only been associated with CORS for four years or less is 46%.
- The proportion of members in the 3-4 year category has declined to 9% from 15% but the percentage of members having been in the Society for 5-10 years has increased to 27% (up from 22% over the past year) suggesting a progression or aging of the membership in this

category. This is an improvement in retaining members who have been in the Society for 5 years or so.

- There is a drastic reduction in the proportion of members in the 10-15 year category at only 5% of the membership. It will be important over the next several years to ensure that ‘bulge’ observed in the 5-10 year level continues its progression. It is important that CORS continues to remain relevant to mid-career individuals so that they retain their memberships.
- Members who have been in the Society for over 25 years also constitute a fairly large percentage of the membership at 13%. As this group continues to age and retire from the profession it appears that their number will not be replaced.
- The number of people joining the society during the 2008-2009 membership year was 103, 25 less than in the previous period. Included in the number of new memberships are 14 memberships (13 Member and 1 Retired Member) which were reinstated, i.e. individuals who rejoined the Society after having let their memberships lapse. Efforts by CORS Council to encourage previous members to rejoin the Society have, therefore, been beneficial. The actual number of ‘new’ members, i.e. individuals with no previous association with CORS is 89.
- The Toronto sections (including Toronto Student) accounted for the most new memberships with 22 or 20%. The Ottawa and Edmonton sections were successful in attracting 14 and 12 new members respectively and Waterloo Student continued its rejuvenation with its numbers being boosted by another 10 Student members.
- The number of new Members joining the Society in the 2008-2009 membership year was 46; five fewer than the previous year. The number of new Student Members was significantly lower this year over last year - 55 new memberships as opposed to 77 in 2007-2008. Of the 55 new Student members last year, 28 or 51% were issued diplomas.
- At the end of the 2008-2009 membership year, the number of specific requests for a paper copy of the Bulletin was 98 or 22% of the total membership by 62 Members, 7 Retired Members, and 29 Student Members. Only 5 fewer paper copies of the Bulletin were required than in the previous year.
- During the 2008-2009 membership year a total of 118 memberships were discontinued, 8 less than in the previous membership year. Ninety-two per cent of the discontinued members were the result of cancellations due to members being in arrears and 8% due to invalid addresses. The most discontinued memberships occurred in the Toronto sections (35) and in SW Ontario (20).
- Of the 118 discontinued memberships, 62 or 52% were Members, 2 or 2% were Retired Members, and 54 or 46% were Student Members.
- The number of discontinued Member memberships increased over last year by 21 or 51%. This represents the largest number of Member memberships discontinued over the past five years. Fifty-four Student memberships were discontinued in 2008-2009; 27 or 33% fewer than the previous year.
- Sixty-five or 58% of the memberships cancelled in the 2008-2009 membership year had been held for two years or less. This is a drop in terms of both absolute number and percentage over last year when 86 or 70% of the memberships cancelled had been held for two years or less. Unfortunately, almost half of memberships discontinued after two years or less were Members whereas in previous years Student memberships accounted for the majority (88% in 2007-2008) of this category. The retention of new Members in the Society remains, therefore, a priority.

- At the commencement of the 2009-2010 membership year 197 or 44% of the CORS membership had renewed. At the same time last year 47% had renewed.
- Of the 400 banking transactions conducted in the processing of membership renewals and new memberships last year, 25% of the membership preferred to pay their fees by cheque, 24% by MasterCard and 51% by Visa. Thirty percent of the contact was by mail, an increase of 5% over last year and 70% was web-based.

Despite experiencing a decrease in total membership last year, the Canadian Operational Research Society remains vital and continues to fulfil its mandate of promoting and safeguarding the existence of an OR community in Canada. It is interesting to note that notwithstanding minor fluctuations in total membership over the past five years, a level in the mid four hundreds has been consistently maintained. Observed trends, however, identify that the recruitment and retention of new members does continue to be of concern.

With respect to recruitment, contacting and the encouraging former Members to rejoin the Society has yielded some success and should continue. Also, the CORS Diploma program with its membership requirement has proven to be an effective means of Student member recruitment. Diploma Coordinators should, therefore, be encouraged to promote the program at their institutions with renewed vigour.

In terms of retention, the departure of Members must be stemmed. On November 28, 2009 Council adopted the concept of Liaison Officers put forward in John Blake's report on the future of the Society. Three Council members were assigned regions of responsibility with the mandate to improve communication and to re-establish the connection between the national and local levels. This concept should be explored and expanded further. Specific initiatives to be undertaken on the part of the Liaison Officers should be identified to achieve the desired outcome; e.g. having the officers review in detail Part 6 of this report for the sections within their sphere of responsibility and identify areas where national resources (administrative and fiscal) could be helpful and having them ensure on an on-going basis that local section executives are aware of their constitutional responsibilities.

Ensuring that membership retains its value is also an important factor in retaining Members. Ways to improve value may include: instituting more and varied awards for mid-career professionals; more local section events; and more articles and items of interest and relevance published in the CORS-SCRO Bulletin e.g. interviews, profiles, features on careers, OR programs, practitioners.

On the basis of the report's findings Council, may wish to consider amending its invoicing policy. Instead of sending a renewal reminder message to the membership on April 1st, doing so before March 31st may be beneficial for reporting and fiscal purposes. This year, the message prompted 46 members to renew but since they occurred after year end (March 31st) they were not included or reflected in the figures.

Overall

As shown in Table 1, total membership in the Canadian Operational Research Society at the end of the 2008-2009 membership year (March 31, 2009) was 444. This represents a decrease in membership of 18 over the previous year. More people left the Society than joined. While there have been minor fluctuations in total membership over the past five years, it appears that a level in the mid four hundreds has been consistently maintained. While slightly less, this is also more or less in keeping with the levels seen in the late nineteen nineties.

Table 1: CORS Membership 1998-2009*

Membership Year*	Total Membership	Change in Membership	Growth Rate
1997- 1998	468		
1998-1999	446	-22	-4.7%
1999-2000	471	25	5.6%
2000-2001	464	-7	-1.5%
2001-2002	538	74	15.9%
2002-2003	610	72	13.4%
2003-2004	415	-195	-32%
2004-2005	450	35	8.4%
2005-2006	442	-8	-1.8
2006-2007	442	0	0
2007-2008	462	20	4.52
2008-2009	444	-18	-3.9

* The CORS membership year is from April 1st to March 31st of the following year. The figures presented in this table represent, therefore, the number of the members in the Society at the end of each membership year, i.e. as of March 31st.

The volatility in the numbers over the 2000-2003 period is accounted for by policy decisions relating to complimentary memberships being included with conference registrations (CORS National as well as SCOPE) and CORS contracting a membership services provider in December 2002. The implications of the former was the ballooning of membership numbers from 2001-2003 and of the latter, the rationalization of the database over the 2003-2004 membership year which resulted in the elimination of lapsed memberships, changes in membership administrative processes, and policy changes relating to conference memberships.

Membership by Member Type

The distribution of CORS membership by member type is presented by absolute number in Table 2, by percentage of total membership in Table 3 and graphically in Graph 2. Currently, 291 or 66% of the membership are Members, 18 or 4% Retired Members, 128 or 29% Student Members, and 7 or 1% Emeritus Members. A close examination of the distribution of the membership by member type reveals that the decrease in membership is primarily attributed to a

Overview of the Membership

decrease in the number of Members in the Society which declined from 310 in 2008 to 291 in 2009, a decrease of 19. The number of Retired members increased by 1 and the number of Student members remained unchanged.

Graph 1: CORS Membership 1998-2009

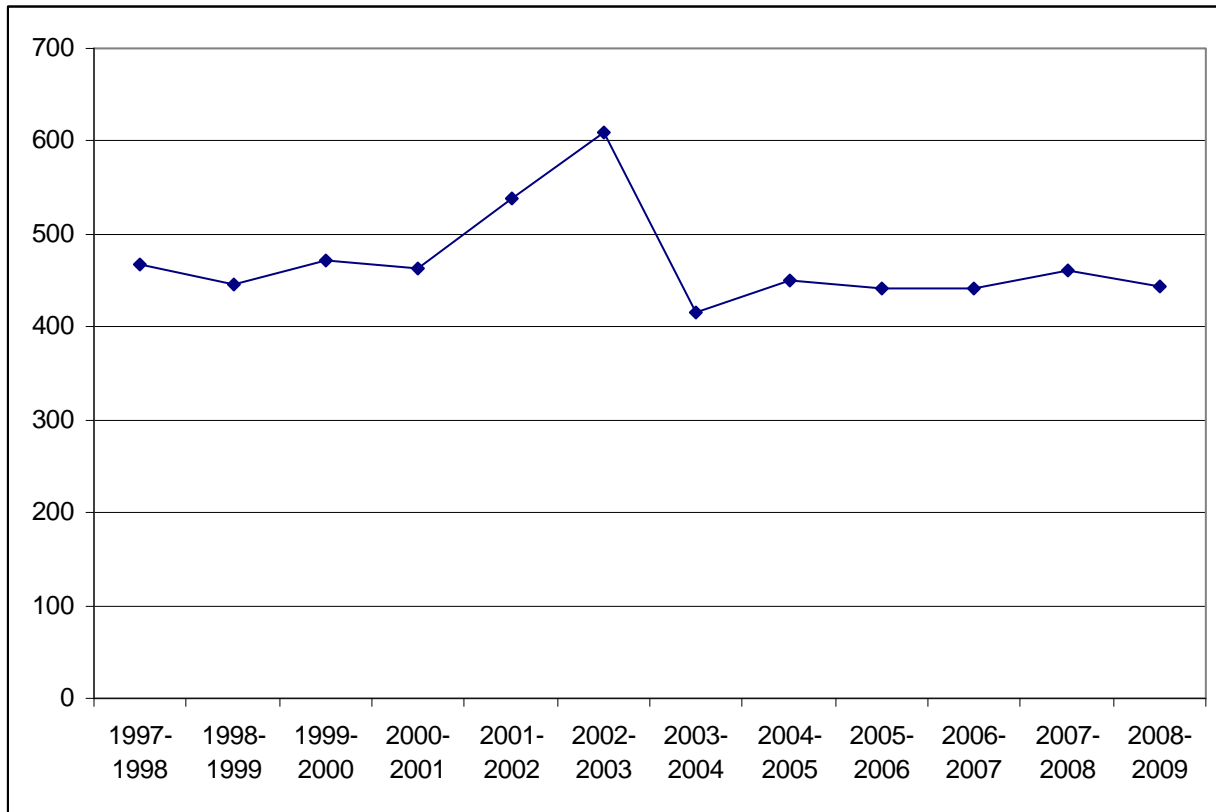


Table 2: CORS Membership by Member Type 2000-2009

<i>Member Type</i>	<i>1999-2000</i>	<i>2000-2001</i>	<i>2001-2002</i>	<i>2002-2003</i>	<i>2003-2004</i>	<i>2004-2005</i>	<i>2005-2006</i>	<i>2006-2007</i>	<i>2007-2008</i>	<i>2008-2009</i>
Member	346	344	372	418	295	306	288	278	310	291
Retired Member	23	24	23	25	25	21	20	20	17	18
Student Member	102	96	143	167	95	118	129	137	128	128
Emeritus Member	-	-	-	-	-	5	5	7	7	7
Total	471	464	538	610	415	450	442	442	462	444

Table 3: Percentage Distribution of CORS Membership by Member Type 2000-2009

Member Type	1999-2000	2000-2001	2001-2002	2002-2003	2003-2004	2004-2005	2005-2006	2006-2007	2007-2008	2008-2009
Regular Member	73%	74%	69%	69%	71%	68%	65%	63%	67%	66%
Retired Member	5%	5%	4%	4%	6%	5%	5%	5%	4%	4%
Student Member	22%	21%	27%	27%	23%	26%	29%	31%	28%	29%
Emeritus Member						1%	1%	2%	2%	1%
Total	100%	100%	100%	100%	100%	100%	100%	100%	100%	100%

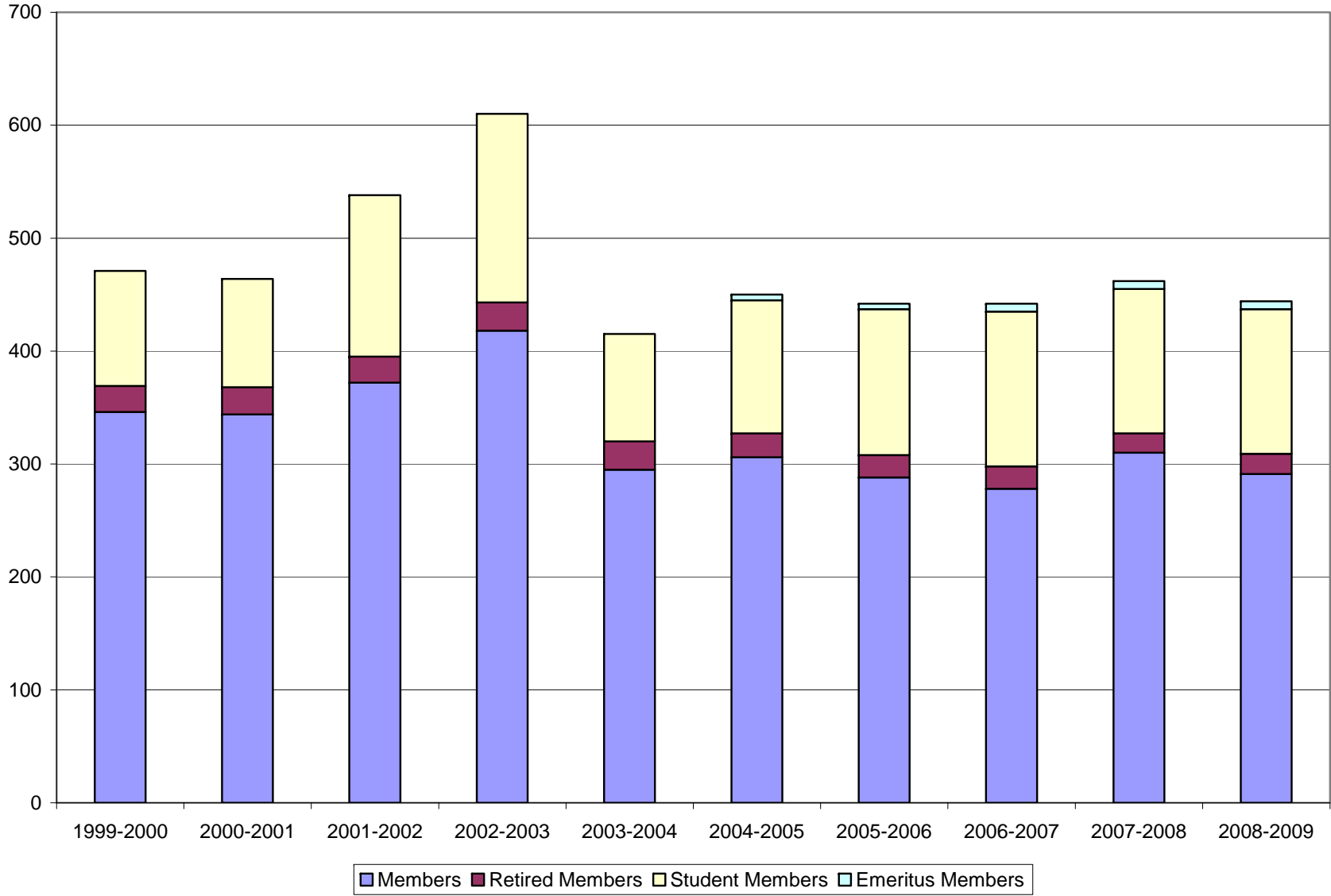
Membership by Section

The distribution of the Society’s membership by section from 2000 - 2009 is presented in Table 4. The percentage distribution of the membership by section at the end of the 2008-2009 membership year is provided in Graph 3. Graph 4 graphically represents membership by section from a historical perspective. For the purposes of consistency and to aid comparison, unless specifically identified by name, the Toronto Student, Ottawa Student, Waterloo Student and Vancouver Student sections have been amalgamated with their regional sections. A detailed review and analysis of the membership within each section is provided in Part 6.

Table 4: CORS Membership by Section 2000-2009

Section	1999-2000	2000-2001	2001-2002	2002-2003	2003-2004	2004-2005	2005-2006	2006-2007	2007-2008	2008-2009
Atlantic	35	34	43	43	33	38	42	36	30	30
Calgary	30	28	27	32	32	29	32	28	24	24
Complimentary	5	5	5	5	5	0	0	0	0	0
Edmonton	20	35	40	58	36	28	16	20	13	20
International	41	43	75	87	38	41	22	17	32	33
Kingston	13	11	10	10	12	15	15	15	17	11
Montreal	48	45	79	80	39	46	46	38	53	56
National	2	10	1	1	1	1	1	1	1	1
Ottawa Student	5	4	4	3	3	11	11	5	11	13
Ottawa	48	50	50	54	35	40	33	25	31	34
Quebec	31	28	49	41	24	26	24	24	26	30
Saskatoon	13	14	17	14	9	9	10	11	10	10
SW Ontario	37	31	26	42	37	34	44	61	47	33
Toronto	68	61	55	67	56	56	52	61	71	63
Toronto Student	28	15	13	21	11	29	50	51	41	32
Vancouver	36	27	25	28	24	25	25	28	31	27
Vancouver Student	0	11	10	16	9	10	8	9	4	4
Waterloo Student	8	6	3	4	7	7	8	10	18	20
Winnipeg	3	6	6	4	4	5	3	2	2	3
Total	471	464	538	610	415	450	442	442	462	444

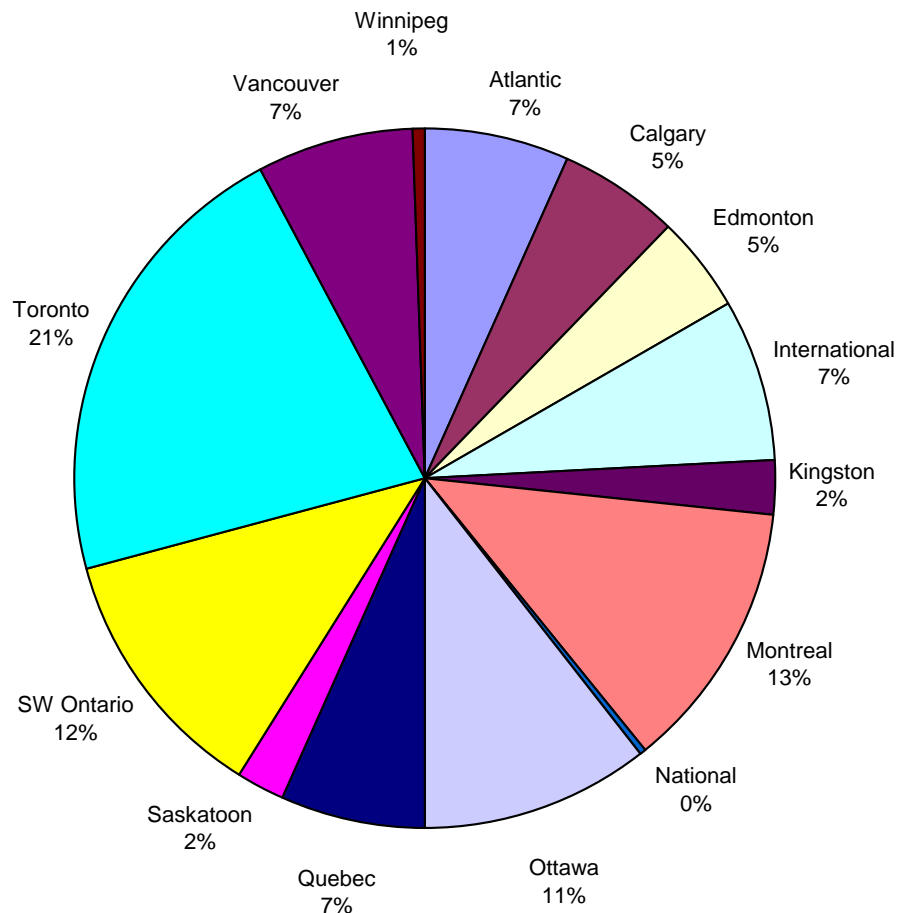
Graph 2: CORS Membership by Member Type 2000-2009



Overview of the Membership

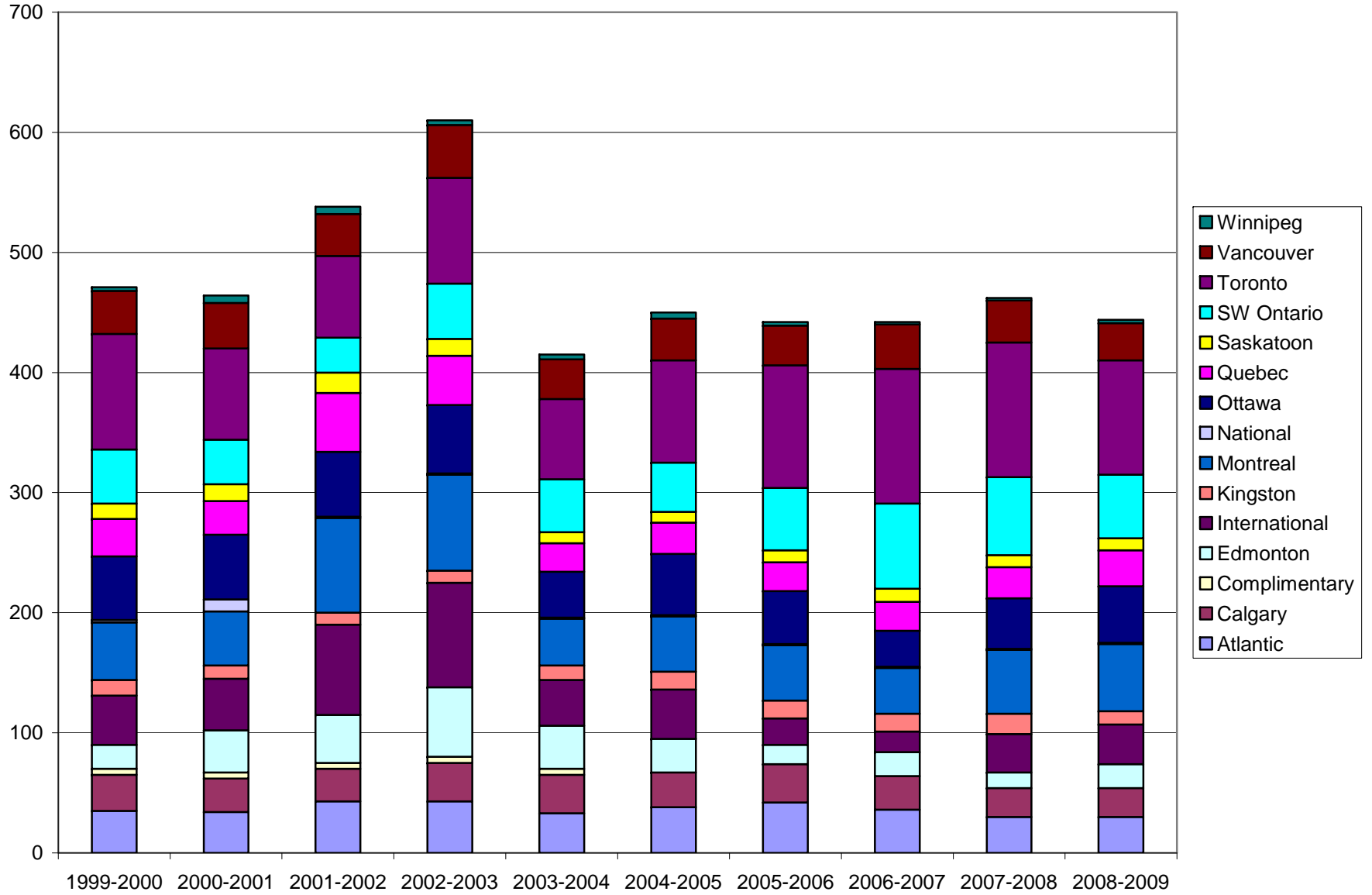
The Toronto Section constitutes the largest section in the Society with 95 members or 21% of total membership. The next largest section is Montreal with 56 members or 13% of the membership followed closely by SW Ontario with a total of 53 members (12%). While retaining its position as the largest section, Toronto experienced the largest decline in membership in the 2008-2009 year with membership decreasing from 112 to 95, a loss of 17 members. For the third consecutive year, the SW Ontario section experienced a decreased in size of 12 members from 65 to 53 causing the section to relinquish its status as the second largest section to Montreal which experienced a growth in membership of 3. Kingston is at its lowest membership level in 5 years having experienced a loss in membership of 6 reducing its total membership to 11. Membership in the Vancouver section is at a ten year low. Table 4 also reveals that the Edmonton section experienced the most growth in membership over the past year, growing by 7 members and rebounding from a corresponding loss in the previous year. The current number of members (20) is still significantly less than the membership level of 58 in 2003 when the section was the fourth largest in the Society. Membership in the Ottawa section continues to increase. The addition of 5 new members over the past year returns membership levels to levels in the mid 2000's when the section was vital and met regularly. A rejuvenation of the section is underway. Membership levels in the Atlantic and Calgary sections remain unchanged from last year, at their lowest levels in more than 10 years. Saskatoon's membership is unchanged from last year.

Graph 3: Percentage Distribution of CORS Membership by Section March 31, 2009²



² For the purposes of consistency and to aid comparison, the Toronto Student, Ottawa Student, Waterloo Student and Vancouver Student sections have been amalgamated with their regional section.

Graph 4: CORS Membership by Section 2000-2009



Membership by Section and Member Type

The distribution of the Society’s membership by section and member type as of March 31, 2009 is presented in Table 5 and Graph 5. The percentage distribution of the membership by section and member type is provided in Table 6. Refer to Part 6 for a detailed and historical analysis of the membership by section and member type.

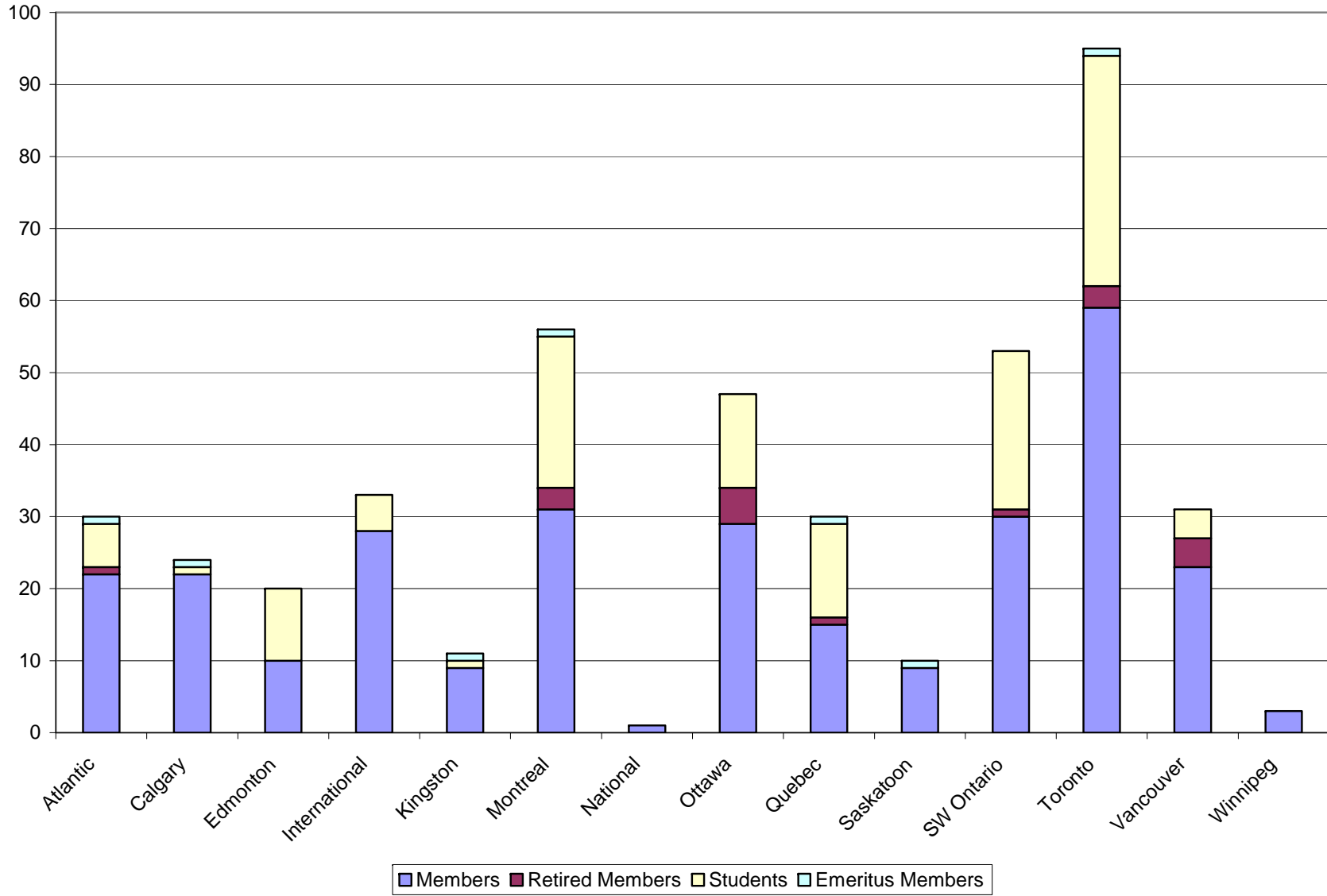
Table 5: CORS Membership by Section and Member Type March 31, 2009

<i>Section</i>	<i>Member</i>	<i>Retired</i>	<i>Student</i>	<i>Emeritus</i>	<i>Total</i>
Atlantic	22	1	6	1	30
Calgary	22	0	1	1	24
Edmonton	10	0	10	0	20
International	28	0	5	0	33
Kingston	9	0	1	1	11
Montreal	31	3	21	1	56
National	1	0	0	0	1
Ottawa	29	5	13	0	47
Quebec	15	1	13	1	30
Saskatoon	9	0	0	1	10
SW Ontario	30	1	22	0	53
Toronto	59	3	32	1	95
Vancouver	23	4	4	0	31
Winnipeg	3	0	0	0	3
Total	291	18	128	7	444

Table 6: Percentage Distribution of CORS Membership by Section and Member Type March 31, 2009

<i>Section</i>	<i>Member</i>	<i>Retired</i>	<i>Student</i>	<i>Emeritus</i>	<i>Total</i>
Atlantic	8%	6%	5%	14%	7%
Calgary	8%	0%	1%	14%	5%
Edmonton	3%	0%	8%	0%	5%
International	10%	0%	4%	0%	7%
Kingston	3%	0%	1%	14%	2%
Montreal	11%	17%	16%	14%	13%
National	0%	0%	0%	0%	0%
Ottawa	10%	28%	10%	0%	11%
Quebec	5%	6%	10%	14%	7%
Saskatoon	3%	0%	0%	14%	2%
SW Ontario	10%	6%	17%	0%	12%
Toronto	20%	17%	25%	14%	21%
Vancouver	8%	22%	3%	0%	7%
Winnipeg	1%	0%	0%	0%	1%
Total	100%	100%	100%	100%	100%

Graph 5: CORS Membership by Section and Member Type March 31, 2009



The section with the most CORS Members is Toronto with 59 or 20% of the Members in the Society. Montreal is the next largest section in terms of Members with 31 but it only has a 1, 2 and 3 Member advantage over the SW Ontario, Ottawa and International sections respectively. Most of the 18 Retired Members in the Society (28%) are in the Ottawa section with the Vancouver section accounting for another 5 or 22%. While Toronto remains the section with the largest number of Student Members at 32 or 25% of the student membership, student membership in the section actually decreased by 9 over the past year. SW Ontario section (excluding Waterloo Student) also experienced a significant decrease in student membership losing 7 Student Members reducing the number to 2 in the section. Student membership increased the most in the Edmonton section growing from 4 to 10. Other sections experiencing an increase in the number of Student Members were Quebec (5), Montreal (3) and Waterloo Student (2).

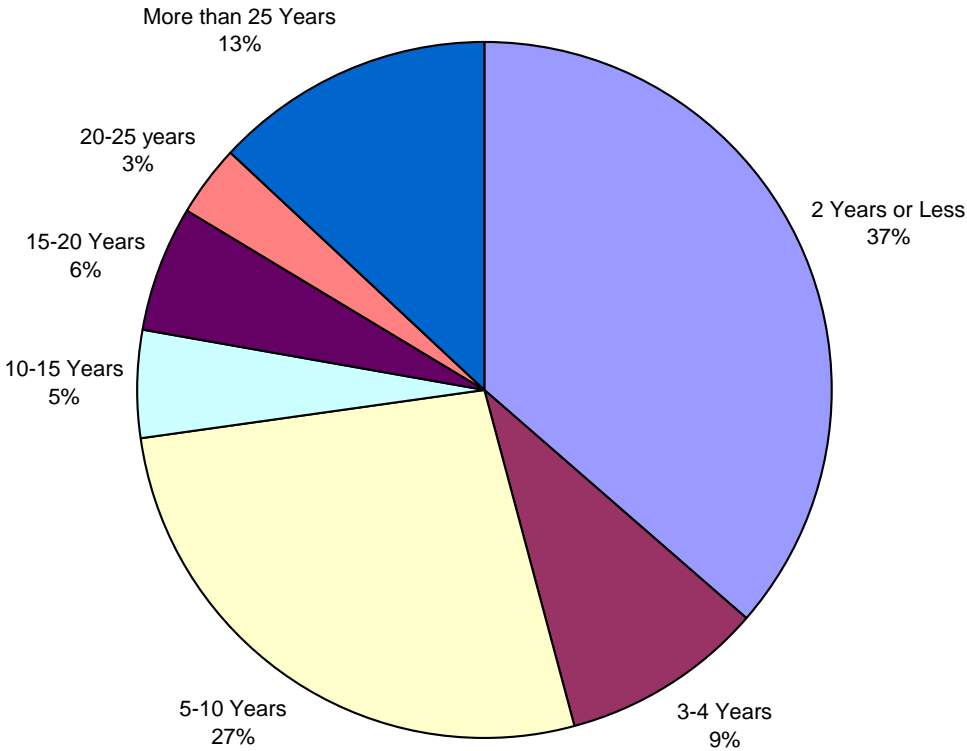
Duration of Membership

Table 7 and Graph 6 provide a snapshot of the CORS membership on the basis of how long an individual has retained membership in the Society. Thirty-seven (37%) of the current membership (161) has been in the Society for two years or less. With 46% of the membership having held their memberships for four years or less retention of these members is essential to the continued vitality of the Society. The proportion of members in the 3-4 year category has declined to 9% from 15% but the percentage of members having been in the Society for 5-10 years has increased to 27% (up from 22% over the past year) suggesting a progression or aging of the membership in this category. This is an improvement in retaining members who have been in the Society for 5 years or so. As Graph 7 reveals there is a drastic reduction in the proportion of members in the 10-15 year category at only 5% of the membership. It will be important over the next several years to ensure that ‘bulge’ observed in the 5-10 year level continues its progression. This is especially important since the percentage of members who have been in the Society for over 25 years is fairly substantial at 13%. As this group continues to age and retire from the profession, it currently appears that their number will not be replaced.

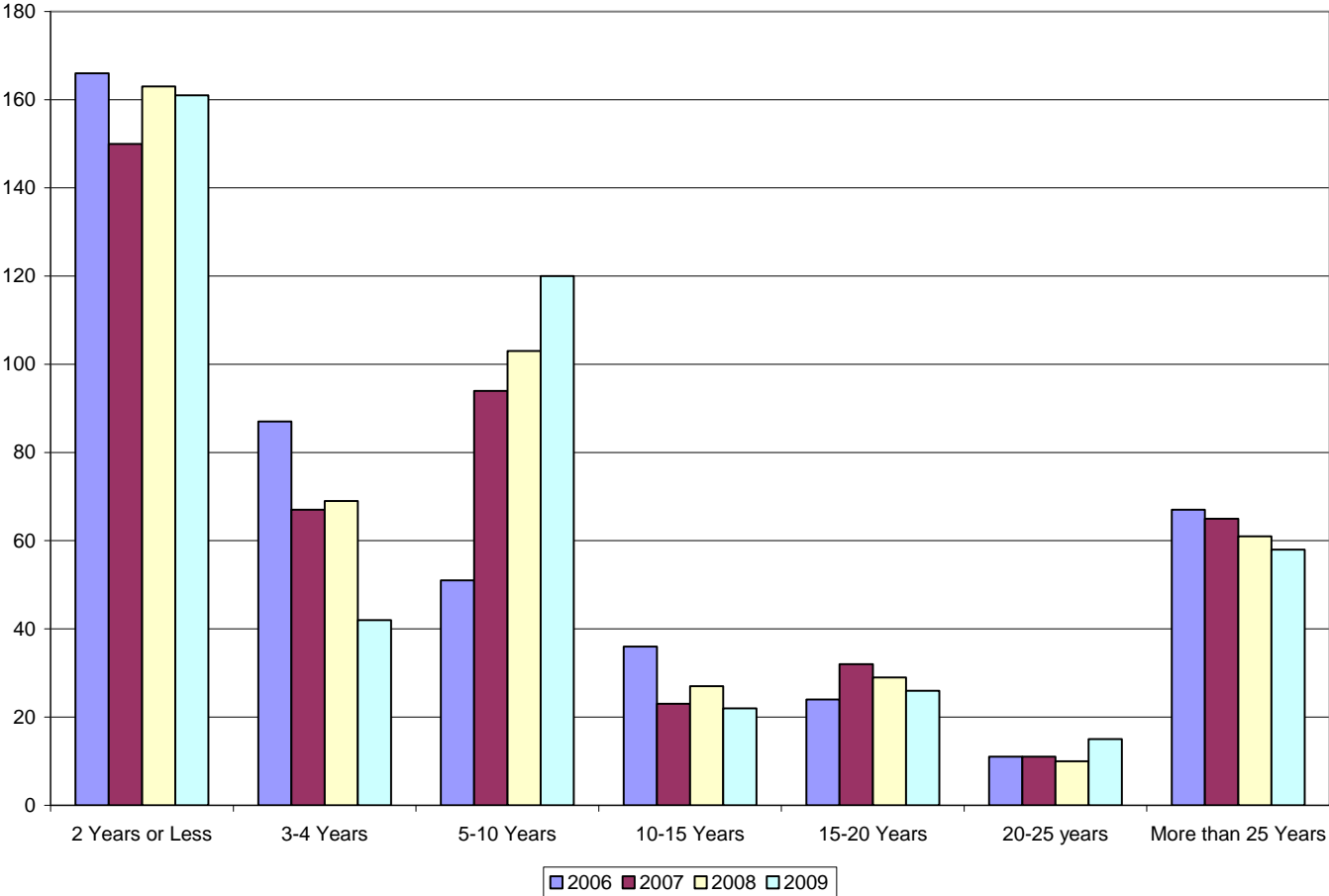
Table 7: CORS Membership by Duration of Membership in the Society as of March 31, 2009

<i>Duration of Membership</i>	<i>Member</i>	<i>Retired</i>	<i>Student</i>	<i>Emeritus</i>	<i>Total</i>
2 Years or Less	62	1	98	0	161
3 -4 Years	25	1	16	0	42
5-10 Years	103	2	14	1	120
10-15 Years	21	1	0	0	22
15-20 Years	26	0	0	0	26
20-25 years	15	0	0	0	15
More than 25 Years	39	13	0	6	58
Total	291	18	128	7	444

Graph 6: Percentage Distribution of CORS Membership by Duration of Membership in the Society as of March 31, 2009



Graph 7: Comparison of CORS Membership by Duration of Membership
2006, 2007, 2008 and 2009



Overall

As shown in Table 8, the number of people joining the society during the 2008-2009 membership year was 103, 25 less than in the previous period. Included in the number of new memberships are 14 memberships (13 Member and 1 Retired Member) which were reinstated, i.e. individuals who rejoined the Society after having let their memberships lapse. Two of the reinstated memberships were former Student members who rejoined CORS as Members after an absence of a few years. The actual number of ‘new’ members, i.e. individuals with no previous association with CORS is 89. Efforts of CORS Council to encourage previous members to rejoin the Society have, therefore, been beneficial. Since this is the first year that reinstated membership information has been collected, the figures are included in the new memberships as was the case in previous years.

Table 8: New CORS Memberships 1998-2009*

<i>Year</i>	<i>Total # New Members</i>
1997-1998	41
1998-1999	36
1999-2000	91
2000-2001	115
2001-2002	156
2002-2003	231
2003-2004	73
2004-2005	133
2005-2006	99
2006-2007	87
2007-2008	128
2008-2009	103

* The implications of the March 2003 CORS Council decision to cease the practice of offering one year complimentary memberships to Non CORS members attending the National Conference are reflected in the new membership figures for the subsequent membership years. The price differential in registration fees for Members and Non Members attending the CORS National Conference still encourages some people to join the Society. The decrease in new members joining the Society over in the 2006-2007 membership year may be accounted for by no subsidy in registration fees for CORS Members being offered at CORS 2006 Montreal.

New Memberships by Member Type

As shown in Table 9, the number of new Members joining the Society in the 2008-2009 membership year was 46; five fewer than the previous year. The number of new Student Members was significantly lower this year over last year - 55 new memberships as opposed to 77 in 2007-2008. The CORS Diploma program with its membership requirement has proven to be an effective means of Student member recruitment and so it is not surprising that correspondingly, the number of CORS Diplomas issued in the 2008-2009 membership year was

Table 9: New CORS Memberships by Member Type 2001-2009

<i>Section</i>	<i>2000-2001</i>	<i>2001-2002</i>	<i>2002-2003</i>	<i>2003-2004</i>	<i>2004-2005</i>	<i>2005-2006</i>	<i>2006-2007</i>	<i>2007-2008</i>	<i>2008-2009</i>
Member	64	86	119	31	57	27	23	51	46
Retired Member	0	0	3	0	3	1	0	0	2
Student Member	51	70	109	42	73	71	64	77	55
Total	115	156	231	73	133	99	87	128	103

at a four year low at 32, 18 less than the previous year. Of the 55 new Student members last year, 28 or 51% were issued diplomas. Diploma Coordinators should, therefore, be encouraged to promote the program with renewed vigour.

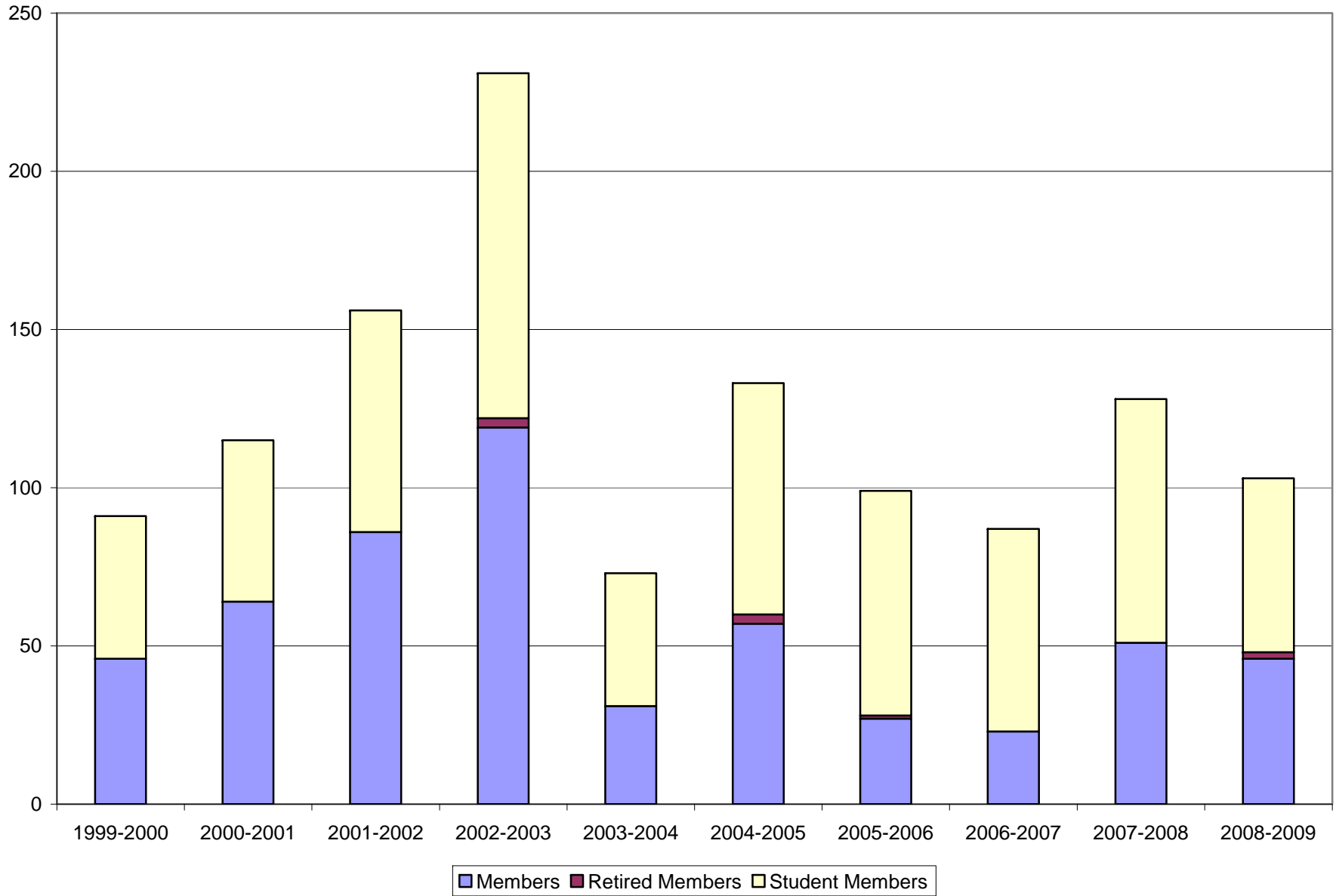
New Memberships by Section

A distribution of the new memberships by section over the past several membership years is presented in Table 10 and graphically for the 2008-2009 membership year in Graph 9. The Toronto sections (including Toronto Student) accounted for the most new memberships with 22 or 20%.

Table 10: New CORS Memberships by Section 2001-2009

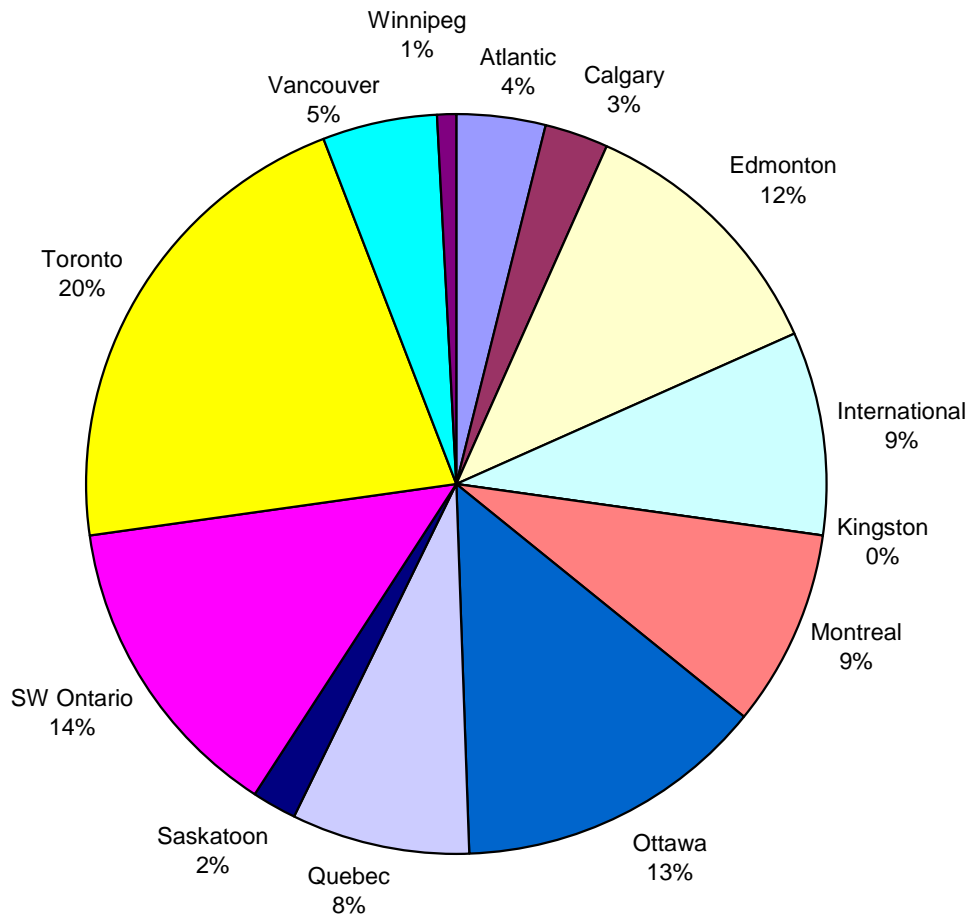
<i>Section</i>	<i>2000-2001</i>	<i>2001-2002</i>	<i>2002-2003</i>	<i>2003-2004</i>	<i>2004-2005</i>	<i>2005-2006</i>	<i>2006-2007</i>	<i>2007-2008</i>	<i>2008-2009</i>
Atlantic	6	16	8	4	12	10	3	6	4
Calgary	6	1	11	0	6	2	2	2	3
Edmonton	26	6	42	9	12	9	9	4	12
International	8	42	33	9	17	5	1	10	9
Kingston	1	0	1	3	3	1	2	3	0
Montreal	5	39	18	5	12	7	2	21	9
National	9	0	0	0	0	0	0	0	0
Ottawa Student	3	1	2	4	8	7	2	8	7
Ottawa	10	8	15	3	6	0	0	4	7
Quebec	3	26	8	5	5	2	0	7	8
Saskatoon	4	3	1	0	2	1	1	1	2
SW Ontario	9	3	26	9	6	13	24	14	4
Toronto	2	2	18	5	9	5	10	14	10
Toronto Student	5	0	19	5	23	31	19	20	12
Vancouver	7	4	8	4	1	0	4	5	3
Vancouver Student	8	2	15	4	6	3	5	1	2
Waterloo Student	2	0	5	3	1	3	3	8	10
Winnipeg	1	3	1	1	4	0	0	0	1
Total	115	156	231	73	133	99	87	128	103

Graph 8: New CORS Memberships by Member Type 2000-2009



The Ottawa and Edmonton sections were successful in attracting 14 and 12 new members respectively and Waterloo Student continued its rejuvenation with its numbers being boosted by another 10 Student members. The lingering effects of hosting the CORS National conference on new memberships is observed in the new members garnered by the Quebec Section and Montreal sections.

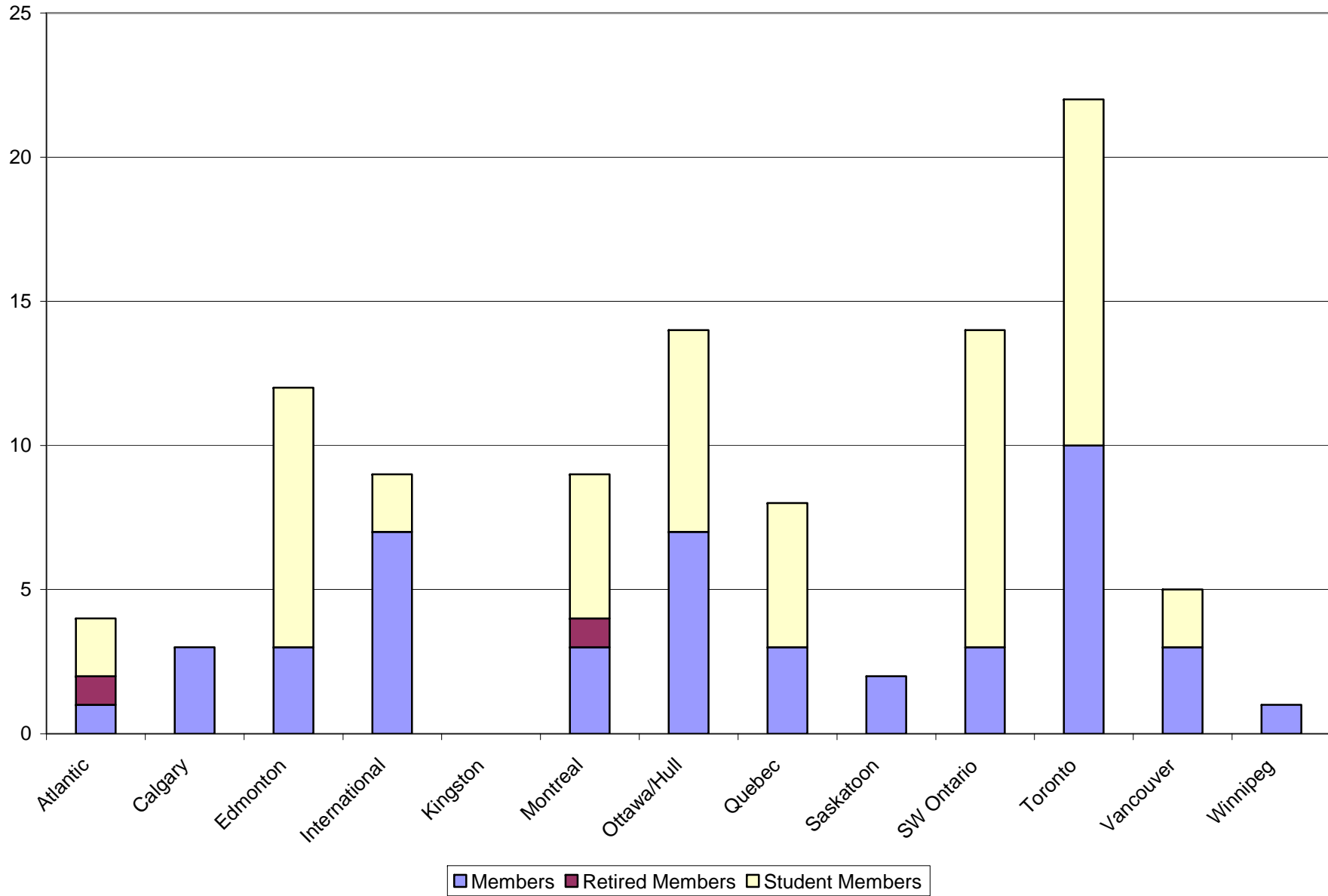
Graph 9: Percentage Distribution of New CORS Memberships by Section for the 2008-2009 Membership Year



New Memberships by Section and Member Type

The distribution of new memberships for the 2008-2009 membership year by section and member type is provided in Table 11 and Graph 10.

Graph 10: New CORS Memberships in the 2008-2009 Membership Year by Section and Member Type



**Table 11: New CORS Memberships in the 2008-2009 Membership Year
By Section and Member Type**

<i>Section</i>	<i>Member</i>	<i>Retired Member</i>	<i>Student</i>	<i>Total</i>
Atlantic	1	1	2	4
Calgary	3	0	0	3
Edmonton	3	0	9	12
International	7	0	2	9
Kingston	0	0	0	0
Montreal	3	1	5	9
Ottawa	7	0	7	14
Quebec	3	0	5	8
Saskatoon	2	0	0	2
SW Ontario	3	0	11	14
Toronto	10	0	12	22
Vancouver	3	0	2	5
Winnipeg	1	0	0	1
Total	46	2	55	103

Related Miscellaneous Observations

When a person submits an application for membership to the Society, they are asked to indicate their preference for receiving the CORS-SCRO Bulletin. Table 12 reveals that of the 103 people joining the Society last year, 11 or 11% made specific requests to receive a paper copy of the publication. Overall, at the end of the 2008-2009 membership year, the number of specific requests for a paper copy of the Bulletin was 98 or 22% of the total membership by 62 Members, 7 Retired Members, and 29 Student Members. Only 5 fewer paper copies of the Bulletin were required than in the previous year.

Table 12: Requests for a Paper Copy of the CORS-SCRO Bulletin by New CORS Members

<i>Year</i>	<i>Member</i>	<i>Retired Member</i>	<i>Student Member</i>	<i>Total</i>
2004-2005	12	1	24	37
2005-2006	11	0	24	35
2006-2007	9	0	10	19
2007-2008	8	0	16	24
2008-2009	3	0	8	11

Overall

Membership in CORS is discontinued if a member is six months in arrears for the current membership year, at a member's request, or if a member's contact information is determined to be invalid. The number of discontinued memberships by year is presented in Table 13. It shows that during the 2008-2009 membership year a total of 118 memberships were discontinued, 8 less than in the previous membership year. Ninety-two per cent of the discontinued members were the result of cancellations due to members being in arrears and 8% due to invalid addresses. The latter were primarily student members who moved and did not bother to update their contact information.

Table 13: Discontinued CORS Memberships 2001-2009

	<i>2000- 2001</i>	<i>2001- 2002</i>	<i>2002- 2003</i>	<i>2003- 2004</i>	<i>2004- 2005</i>	<i>2005- 2006</i>	<i>2006- 2007</i>	<i>2007- 2008</i>	<i>2008- 2009</i>
Mail Returned	27	16	63	21	6	19	10	26	10
Cancelled	86	70	91	263	98	103	86	100	108
Total	113	86	154	284	104	122	96	126	118

Discontinued Memberships by Member Type

As shown in Table 14, of the 118 memberships discontinued over the past year, 62 or 52% were Members, 2 or 2% were Retired Members, and 54 or 46% were Student Members. The number of discontinued Member memberships increased over last year by 21 or 51%. This represents the largest number of Member memberships discontinued over the past five years. Fifty-four Student memberships were discontinued in 2008-2009; 27 or 33% fewer than the previous year.

Table 14: Discontinued CORS Memberships by Member Type 2003-2009

<i>Member Type</i>	<i>2002- 2003</i>	<i>2003- 2004</i>	<i>2004- 2005</i>	<i>2005- 2006</i>	<i>2006- 2007</i>	<i>2007- 2008</i>	<i>2008- 2009</i>
Member	77	164	51	55	44	41	62
Retired Member	6	1	4	5	4	4	2
Student Member	71	119	49	62	48	81	54
Total	154	284	104	122	96	126	118

Discontinued Memberships by Section

The distribution of discontinued memberships by Section since 2001 is provided in Table 15.

Table 15: Discontinued CORS Memberships by Section 2001-2009

	2000-2001	2001-2002	2002-2003	2003-2004	2004-2005	2005-2006	2006-2007	2007-2008	2008-2009
Atlantic	7	5	7	15	9	5	9	10	4
Calgary	5	3	5	11	9	3	6	6	3
Complimentary	0	0	0	0	5	0	0	0	0
Edmonton	4	6	20	40	20	19	4	10	4
International	9	11	19	57	14	23	5	1	10
Kingston	3	1	2	2	1	2	3	2	7
Montreal	9	4	17	40	7	8	10	8	7
National	2	9	0	0	0	0	0	0	0
Ottawa	15	6	14	22	3	16	14	5	9
Quebec	7	6	14	21	3	4	0	4	5
Saskatoon	2	1	4	5	1	0	1	2	1
SW Ontario	16	14	13	13	9	11	8	31	20
Toronto	26	10	23	37	14	24	24	38	35
Vancouver	8	7	15	20	6	6	11	9	13
Winnipeg	0	3	1	1	3	1	1	0	0
Total	113	86	154	284	104	122	96	126	118

Discontinued Memberships by Section and Member Type

Discontinued memberships by section and member type for the 2008-2009 membership year is presented in Table 16 and in Graph 11. The most discontinued memberships occurred in the Toronto sections (35) and in SW Ontario (20).

Duration of Cancelled CORS Memberships

While gaining insight into the magnitude and member type of those who do not renew their CORS memberships has value, an important piece of information that is not obvious from the statistics alone is how long the membership is held before that decision is made. The duration of the memberships cancelled in the 2008-2009 membership year by member type is provided in Table 17.

**Table 16: Discontinued CORS Memberships in the 2008-2009 Membership Year
By Section and Member Type**

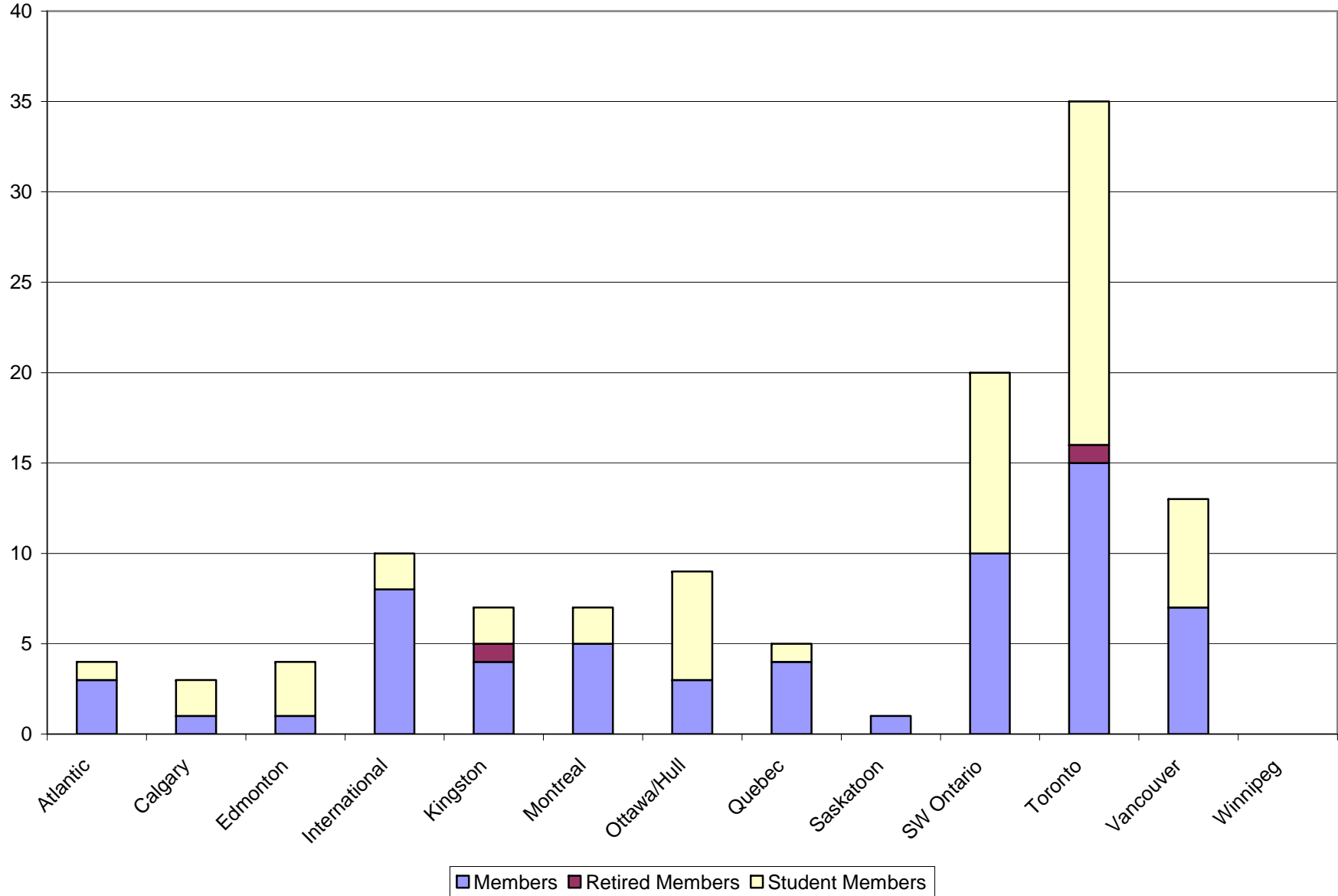
<i>Section</i>	<i>Member</i>	<i>Retired Member</i>	<i>Student Member</i>	<i>Total</i>
Atlantic	3	0	1	4
Calgary	1	0	2	3
Edmonton	1	0	3	4
International	8	0	2	10
Kingston	4	1	2	7
Montreal	5	0	2	7
Ottawa	3	0	6	9
Quebec	4	0	1	5
Saskatoon	1	0	0	1
SW Ontario	10	0	10	20
Toronto	15	1	19	35
Vancouver	7	0	6	13
Winnipeg	0	0	0	0
Total	62	2	54	118

Table 17: Duration of CORS Memberships Cancelled in 2008-2009 Membership Year

<i>Category</i>	<i>Member</i>	<i>Retired Member</i>	<i>Student Member</i>	<i>Total</i>
2 Years or Less	32	1	33	65
3-4 Years	12	0	13	25
5-10 Years	8	0	8	16
10-15 Years	6	1	0	7
15-20 years	0	0	0	0
20-25 Years	1	0	0	1
More than 25 years	3	0	0	4
Total	62	2	54	118

Table 17 reveals that 65 or 58% of the memberships cancelled in the 2008-2009 membership year had been held for two years or less. This is a drop in terms of both absolute number and percentage over last year when 86 or 70% of the memberships cancelled had been held for two years or less. Unfortunately, almost half of memberships discontinued after two years or less were Members whereas in previous years Student memberships accounted for the majority (88% in 2007-2008) of this category. The retention of new Members in the Society remains, therefore, a priority. It has also become apparent over the past few years that efforts should be directed at retaining Members who have held their memberships for a few years but are not yet ‘life-long’, career-committed Members. Ensuring that membership retains its value for mid-career professionals should be pursued; local sections events and activities should be supported both administratively and fiscally; and awards aimed at this particular group initiated. In terms of Student memberships, very few students retain their memberships after completing their program of studies.

Graph 11: Discontinued CORS Memberships in the 2008-2009 Membership Year by Section and Member Type



Part 5: Payment Status of Membership

Overall

A snap shot of the membership at the end of the 2009-2010 membership year in terms of the number of membership renewals processed before the payment due date of April 1, 2009 is provided in Table 18. At the commencement of the 2009-2010 membership year 197 or 44% of the CORS membership had renewed. At the same time last year, 47% had renewed. Refer to Graph 12 to easily identify those sections where efforts should be made to encourage renewals in an attempt to improve membership retention.

Table 18: Payment Status of CORS Membership by Section March 31, 2009

<i>Section</i>	<i>Memberships Renewed</i>	<i>Fees Due for Current Year</i>	<i>Total # of Members</i>
Atlantic	14	16	30
Calgary	9	15	24
Edmonton	7	13	20
International	13	20	33
Kingston	5	6	11
Montreal	26	30	56
National	1	0	1
Ottawa	23	24	47
Quebec	15	15	30
Saskatoon	7	3	10
SW Ontario	18	35	53
Toronto	42	53	95
Vancouver	15	16	31
Winnipeg	2	1	3
Total	197	247	444

Method of Payment

Over the 2008-2009 membership year, 400 banking transactions were conducted in the processing of membership renewals and new memberships. Table 19 provides an indication of how the membership prefers to pay their fees – 25% by cheque, 24% by MasterCard and 51% by Visa. Thirty percent of the contact was by mail, an increase of 5% over last year and 70% was web-based. Not all of the credit card transactions were submitted online; about 23 were submitted by mail.

Graph 12 : Payment Status of CORS Membership by Section as of March 31, 2009

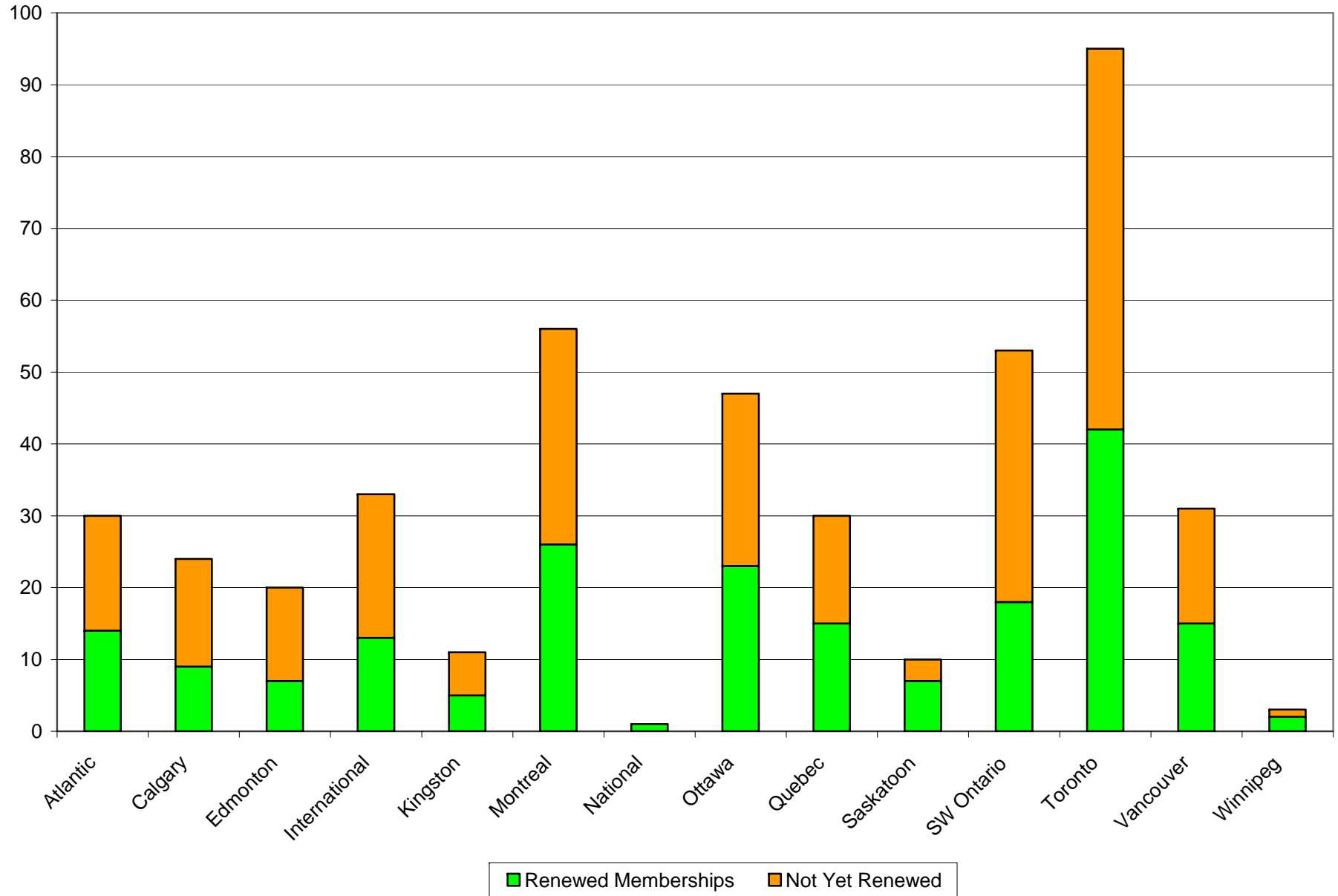


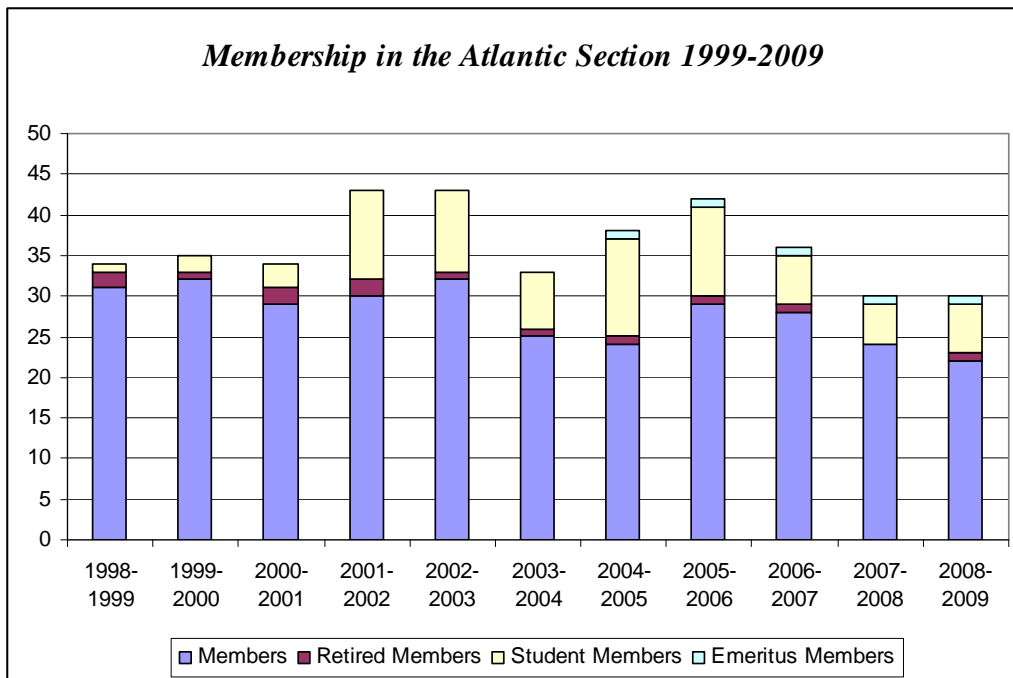
Table 19: Method of Payment of Transactions Conducted in the 2008-2009 Membership Year

<i>Method of Payment</i>	<i>Number</i>	<i>%</i>
Cheque	100	25%
MasterCard	96	24%
Visa	204	51%
Total	400	100%

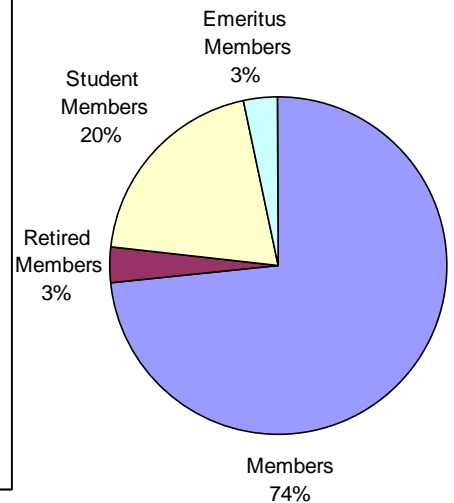
In terms of total number, membership in the Atlantic section remains unchanged from last year with new memberships equalling the number of discontinued memberships. The number of Members in the section however continues to decline with the number at its lowest level in ten years. While the hosting of CORS 2005 in Halifax rejuvenated the Atlantic section in the 2004-2005 and 2005-2006 membership years, it appears the Section has been unable to retain these members.

**Membership in the Atlantic Section by Member Type
1999-2009**

<i>Member Type</i>	<i>1998-1999</i>	<i>1999-2000</i>	<i>2000-2001</i>	<i>2001-2002</i>	<i>2002-2003</i>	<i>2003-2004</i>	<i>2004-2005</i>	<i>2005-2006</i>	<i>2006-2007</i>	<i>2007-2008</i>	<i>2008-2009</i>
Member	31	32	29	30	32	25	24	29	28	24	22
Retired Member	2	1	2	2	1	1	1	1	1	0	1
Student Member	1	2	3	11	10	7	12	11	6	5	6
Emeritus Member	-	-	-	-	-	-	-	1	1	1	1
Total	34	35	34	43	43	33	38	42	36	30	30

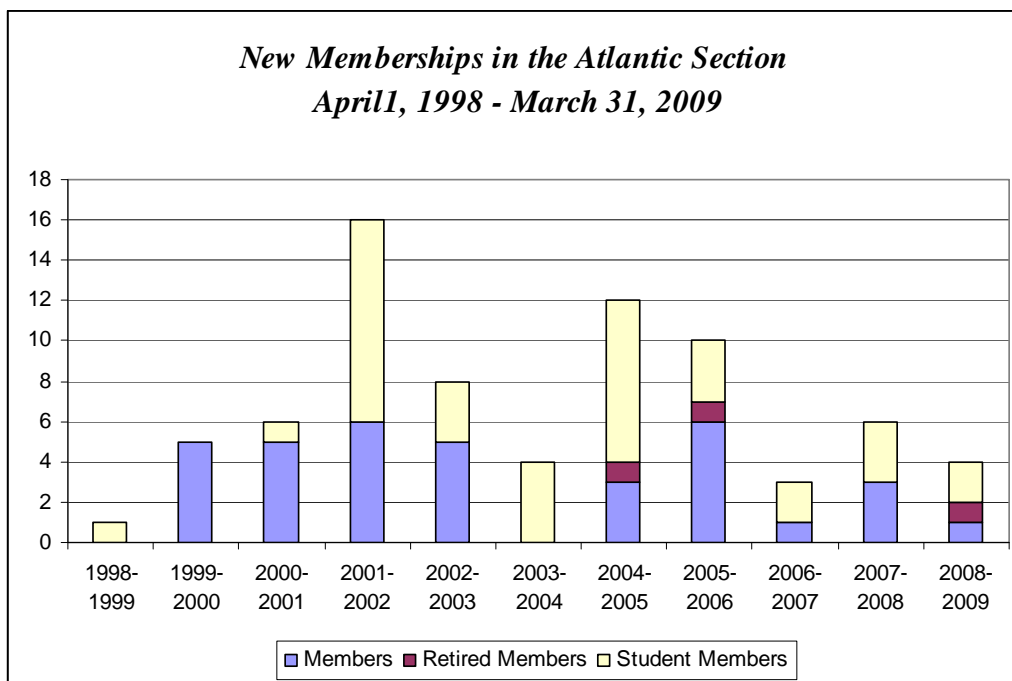


**Percentage Distribution
of Atlantic Section
Membership 2009**



**New Memberships in the Atlantic Section by Member Type
April 1998 – March 2009**

<i>Member Type</i>	<i>1998-1999</i>	<i>1999-2000</i>	<i>2000-2001</i>	<i>2001-2002</i>	<i>2002-2003</i>	<i>2003-2004</i>	<i>2004-2005</i>	<i>2005-2006</i>	<i>2006-2007</i>	<i>2007-2008</i>	<i>2008-2009</i>
Member	0	5	5	6	5	0	3	6	1	3	1
Retired Member	0	0	0	0	0	0	1	1	0	0	1
Student Member	1	0	1	10	3	4	8	3	2	3	2
Total	1	5	6	16	8	4	12	10	3	6	4



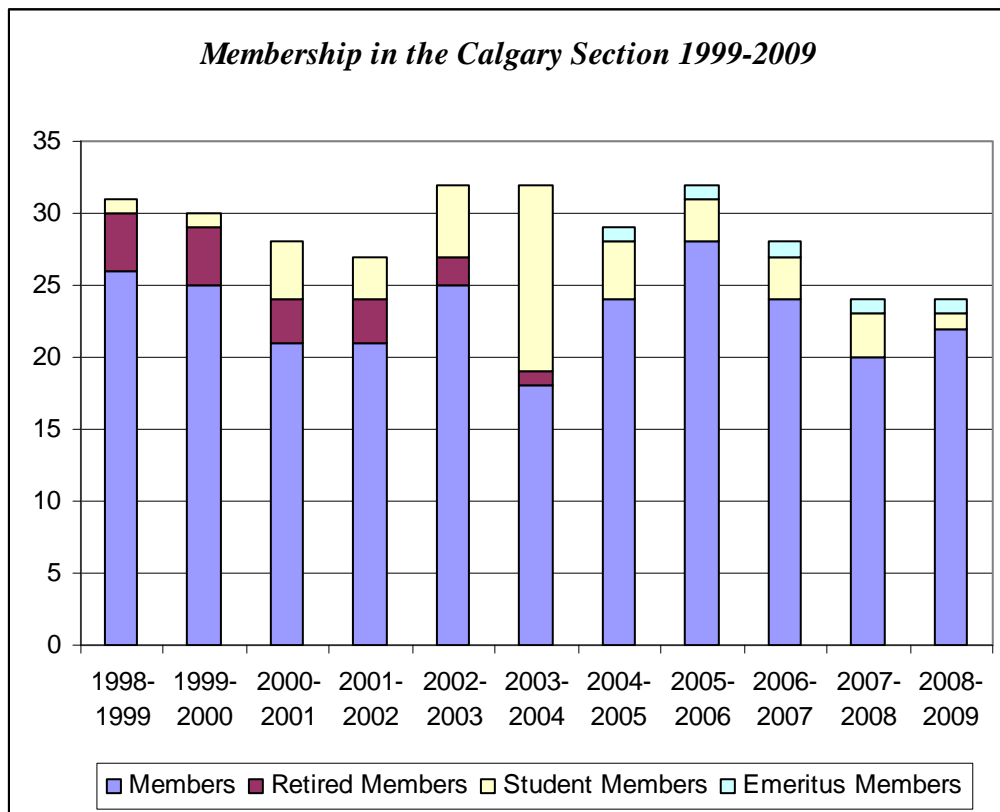
**Discontinued Memberships in the Atlantic Section by Member Type
April 2002 – March 2009**

<i>Member Type</i>	<i>2002-2003</i>	<i>2003-2004</i>	<i>2004-2005</i>	<i>2005-2006</i>	<i>2006-2007</i>	<i>2007-2008</i>	<i>2008-2009</i>
Member	2	9	6	1	4	5	3
Retired Member	1	0	0	1	0	1	0
Student Member	4	6	3	3	5	4	1
Total	7	15	9	5	9	10	4

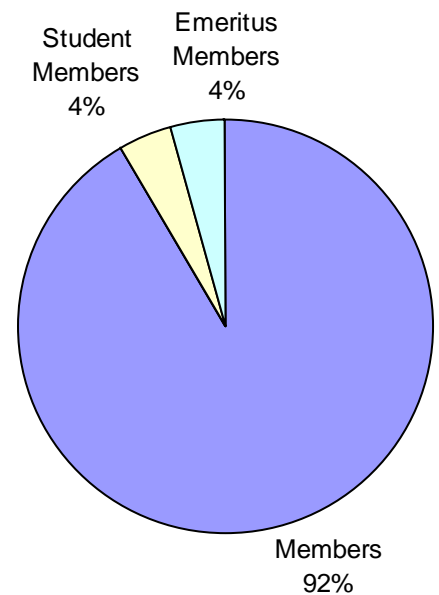
Although total membership in the Calgary section remains unchanged from last year, it experienced a net gain of two Members and a net loss of two Student members. Student membership is almost non-existent at 1. In 2003, student membership was at an all time high of 13. Efforts to encourage students at the University of Calgary to obtain a CORS Diploma should be renewed in order to return student membership levels to those seen in 2003.

**Membership by Type in the Calgary Section by Member Type
1999-2009**

<i>Member Type</i>	<i>1998-1999</i>	<i>1999-2000</i>	<i>2000-2001</i>	<i>2001-2002</i>	<i>2002-2003</i>	<i>2003-2004</i>	<i>2004-2005</i>	<i>2005-2006</i>	<i>2006-2007</i>	<i>2007-2008</i>	<i>2008-2009</i>
Member	26	25	21	21	25	18	24	28	24	20	22
Retired Member	4	4	3	3	2	1	0	0	0	0	0
Student Member	1	1	4	3	5	13	4	3	3	3	1
Emeritus Member							1	1	1	1	1
Total	31	30	28	27	32	32	29	32	28	24	24

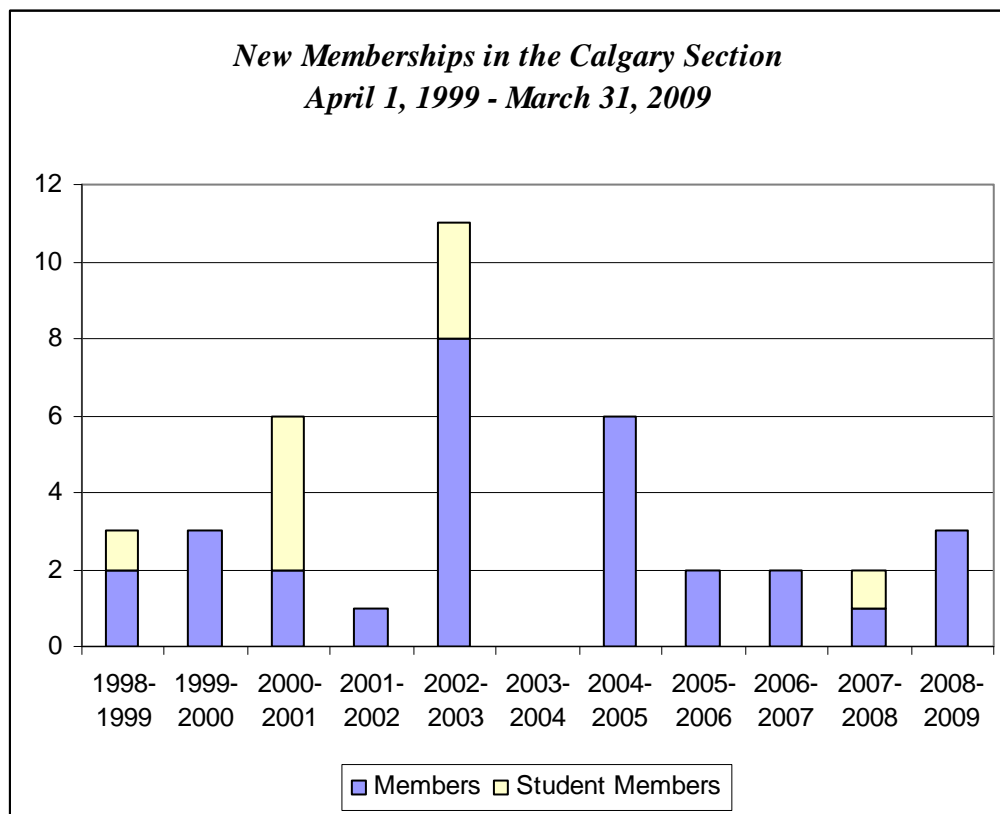


Percentage Distribution of Calgary Section Membership 2009



**New Memberships in the Calgary Section by Member Type
April 1998 – March 2009**

<i>Member Type</i>	<i>1998-1999</i>	<i>1999-2000</i>	<i>2000-2001</i>	<i>2001-2002</i>	<i>2002-2003</i>	<i>2003-2004</i>	<i>2004-2005</i>	<i>2005-2006</i>	<i>2006-2007</i>	<i>2007-2008</i>	<i>2008-2009</i>
Member	2	3	2	1	8	0	6	2	2	1	3
Retired Member	0	0	0	0	0	0	0	0	0	0	0
Student Member	1	0	4	0	3	0	0	0	0	1	0
Total	3	3	6	1	11	0	6	2	2	2	3



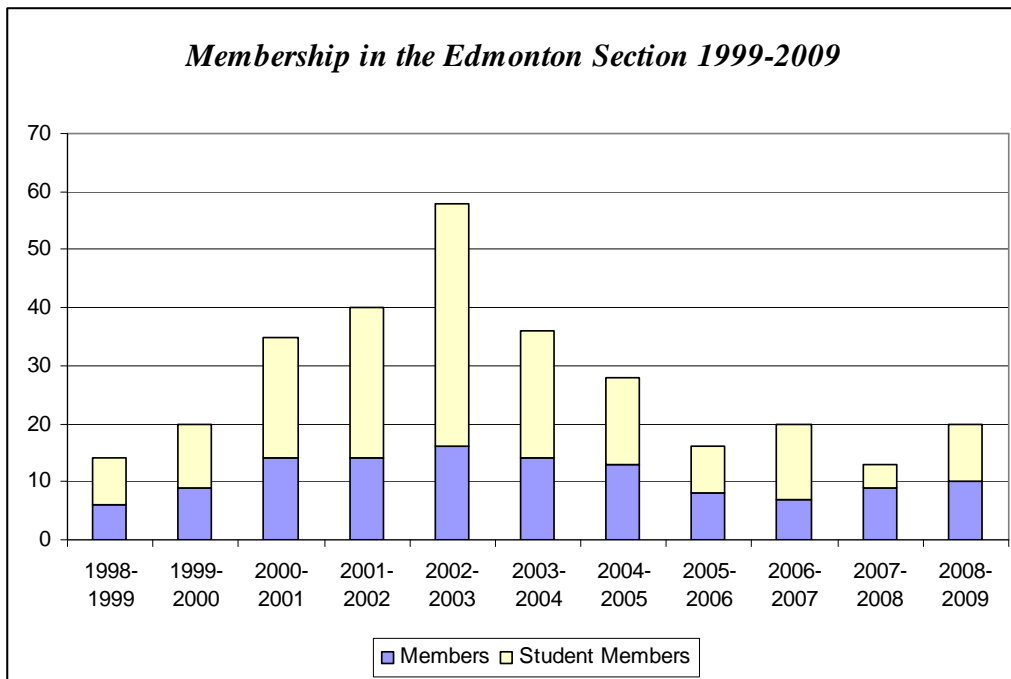
**Discontinued Memberships by in the Calgary Section by Member Type
April 2002 – March 2009**

<i>Member Type</i>	<i>2002-2003</i>	<i>2003-2004</i>	<i>2004-2005</i>	<i>2005-2006</i>	<i>2006-2007</i>	<i>2007-2008</i>	<i>2008-2009</i>
Member	2	8	0	1	6	6	1
Retired Member	2	1	0	0	0	0	0
Student Member	1	1	9	2	0	0	2
Total	5	11	9	3	6	6	3

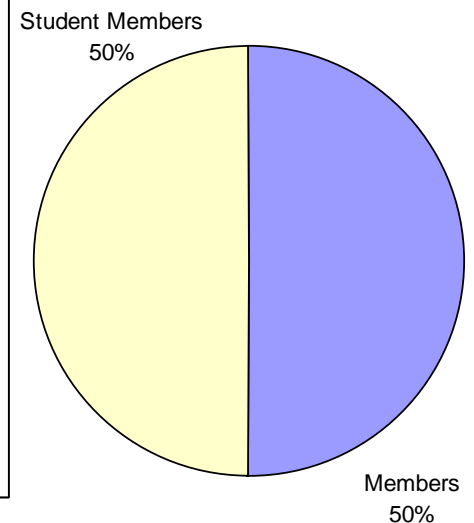
The Edmonton section experienced a 53% growth rate in membership last year rebounding from its lowest level of 13 in 2008 to its current level of 20. Most of the growth was in Student members. The Edmonton section has seen a tremendous fluctuation in numbers over the past several years primarily due to its Student member component. The boon in the Student Member population in 2003-2004 was a direct result of offering complimentary memberships to those participating in the SCOPE (Student Conference on Operations) held at the University of Alberta.

**Membership in the Edmonton Section by Member Type
1999-2009**

<i>Member Type</i>	<i>1998-1999</i>	<i>1999-2000</i>	<i>2000-2001</i>	<i>2001-2002</i>	<i>2002-2003</i>	<i>2003-2004</i>	<i>2004-2005</i>	<i>2005-2006</i>	<i>2006-2007</i>	<i>2007-2008</i>	<i>2008-2009</i>
Member	6	9	14	14	16	14	13	8	7	9	10
Retired Member	0	0	0	0	0	0	0	0	0	0	0
Student Member	8	11	21	26	42	22	15	8	13	4	10
Total	14	20	35	40	58	36	28	16	20	13	20

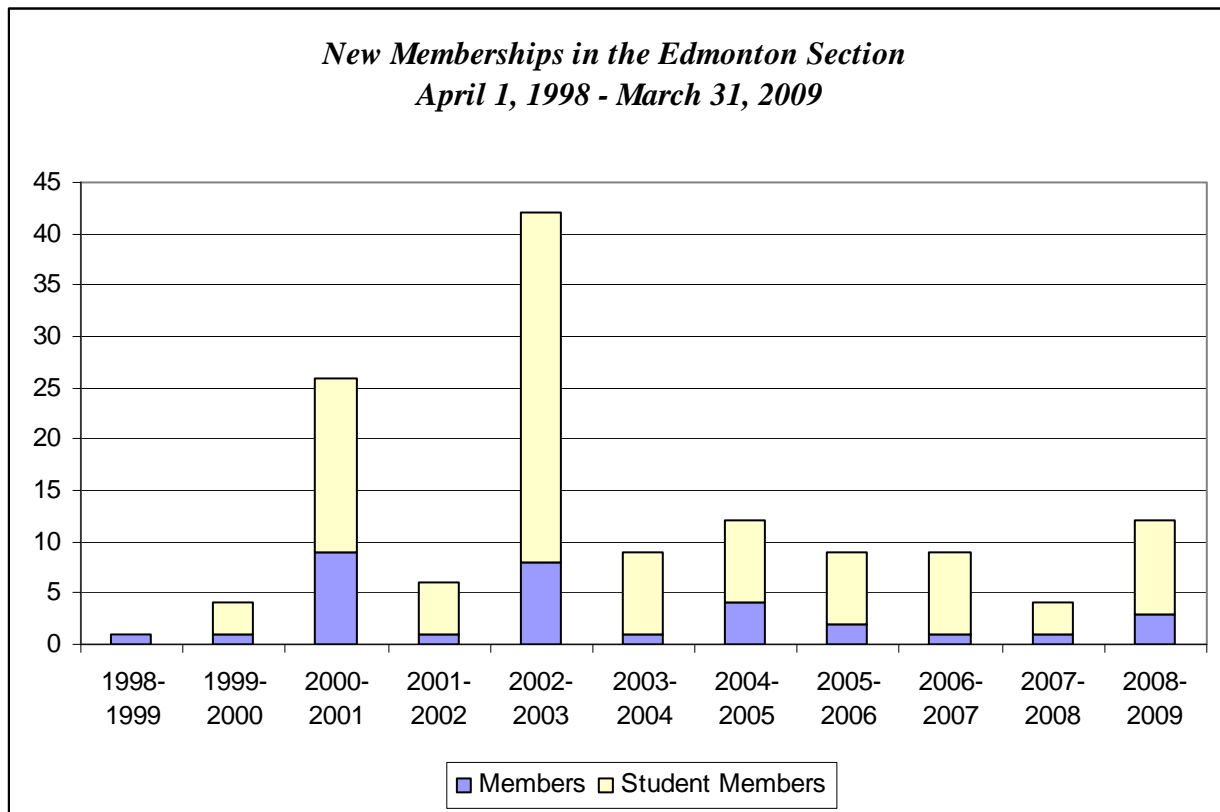


Percentage Distribution of Edmonton Section Membership 2009



*New Memberships in the Edmonton Section by Member Type
April 1998 - March 2009*

<i>Member Type</i>	<i>1998-1999</i>	<i>1999-2000</i>	<i>2000-2001</i>	<i>2001-2002</i>	<i>2002-2003</i>	<i>2003-2004</i>	<i>2004-2005</i>	<i>2005-2006</i>	<i>2006-2007</i>	<i>2007-2008</i>	<i>2008-2009</i>
Member	1	1	9	1	8	1	4	2	1	1	3
Retired Member	0	0	0	0	0	0	0	0	0	0	0
Student Member	0	3	17	5	34	8	8	7	8	3	9
Total	1	4	26	6	42	9	12	9	9	4	12



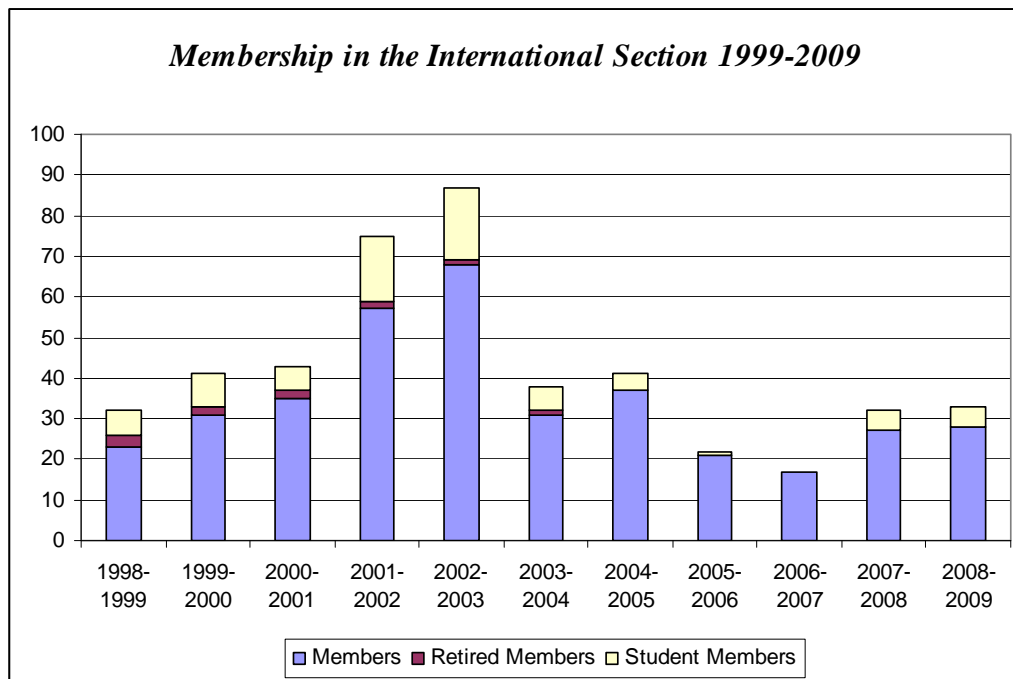
*Discontinued Memberships in the Edmonton Section by Member Type
April 2002 - March 2009*

<i>Member Type</i>	<i>2002-2003</i>	<i>2003-2004</i>	<i>2004-2005</i>	<i>2005-2006</i>	<i>2006-2007</i>	<i>2007-2008</i>	<i>2008-2009</i>
Member	8	4	5	7	2	1	1
Retired Member	0	0	0	0	0	0	0
Student Member	12	36	15	12	2	9	3
Total	20	40	20	19	4	10	4

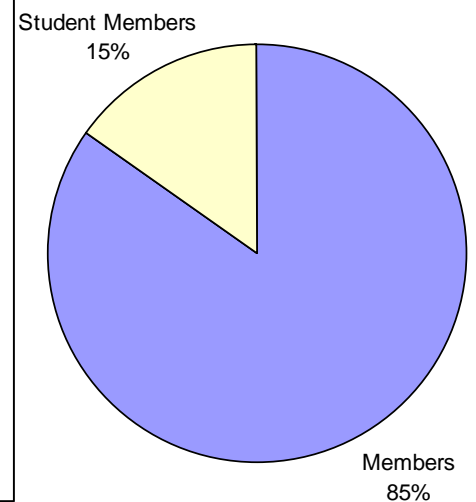
Over the past two years, International memberships have remained relatively stable increasing by 1 to a level of 33 in 2009. The reduced registration fee offered to CORS Members attending joint CORS/INFORMS and CORS National conferences appears to be somewhat of an incentive for international colleagues to join the Society. These memberships are often, however, not renewed. The peak in International members observed in the early 2000s was a consequence of free memberships offered as part of conference registrations. Numbers plummeted when the policy was discontinued in early 2004. The impact of not offering discounted registration fees at CORS 2006, Montreal is also reflected in the table.

**Membership in the International Section by Member Type
1999-2009**

<i>Member Type</i>	<i>1998-1999</i>	<i>1999-2000</i>	<i>2000-2001</i>	<i>2001-2002</i>	<i>2002-2003</i>	<i>2003-2004</i>	<i>2004-2005</i>	<i>2005-2006</i>	<i>2006-2007</i>	<i>2007-2008</i>	<i>2008-2009</i>
Member	23	31	35	57	68	31	37	21	17	27	28
Retired Member	3	2	2	2	1	1	0	0	0	0	0
Student Member	6	8	6	16	18	6	4	1	0	5	5
Total	32	41	43	75	87	38	41	22	17	32	33



Percentage Distribution of International Section Membership 2009



*New Memberships in the International Section by Member Type
April 1998 – March 2009*

<i>Member Type</i>	<i>1998-1999</i>	<i>1999-2000</i>	<i>2000-2001</i>	<i>2001-2002</i>	<i>2002-2003</i>	<i>2003-2004</i>	<i>2004-2005</i>	<i>2005-2006</i>	<i>2006-2007</i>	<i>2007-2008</i>	<i>2008-2009</i>
Member	0	10	8	29	25	5	15	4	1	7	7
Retired Member	0	0	0	0	0	0	0	0	0	0	0
Student Member	1	5	8	13	8	4	2	1	0	3	2
Total	1	15	8	42	33	9	17	5	1	10	9



*Discontinued Memberships in the International Section by Member Type
April 2002 – March 2009*

<i>Member Type</i>	<i>2002-2003</i>	<i>2003-2004</i>	<i>2004-2005</i>	<i>2005-2006</i>	<i>2006-2007</i>	<i>2007-2008</i>	<i>2008-2009</i>
Member	14	42	10	19	4	1	8
Retired Member	1	0	1	0	0	0	0
Student Member	4	15	3	4	1	0	2
Total	19	57	14	23	5	1	10

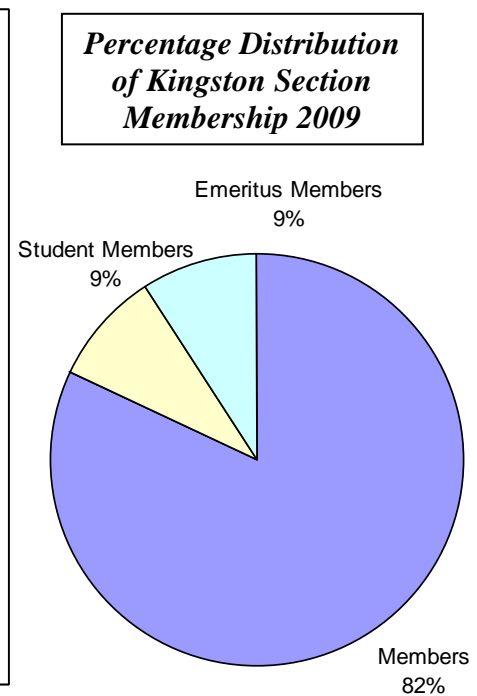
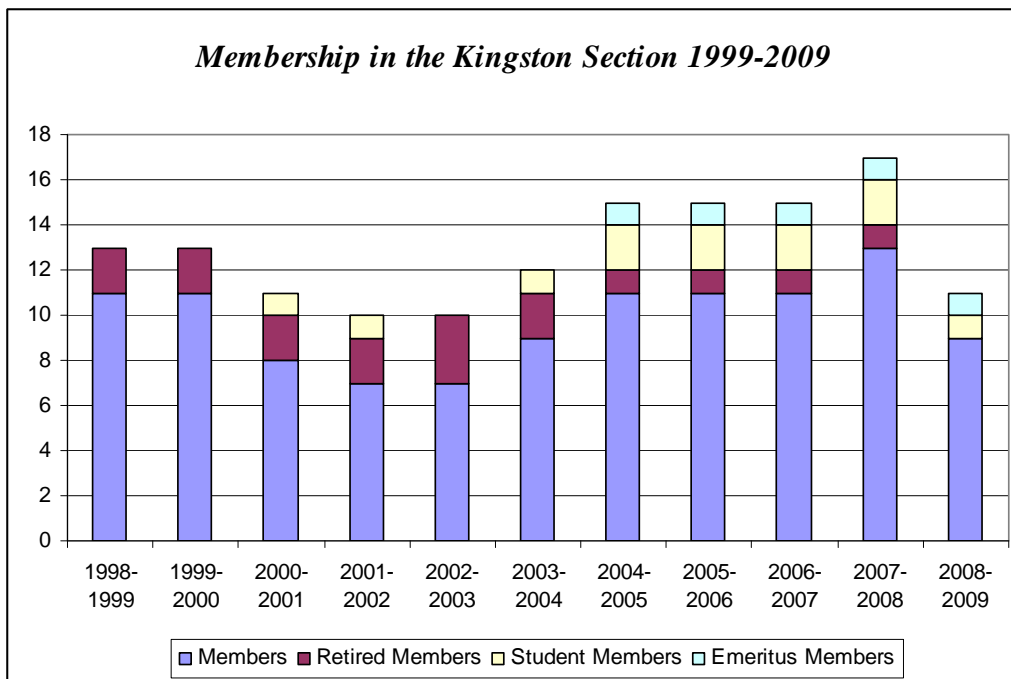
Membership Statistics by Section

Kingston Section

Membership in the Kingston section decreased by 35% from 17 to 11 over the past year returning to membership levels seen in the early 2000s. There are no remaining Retired members in the section.

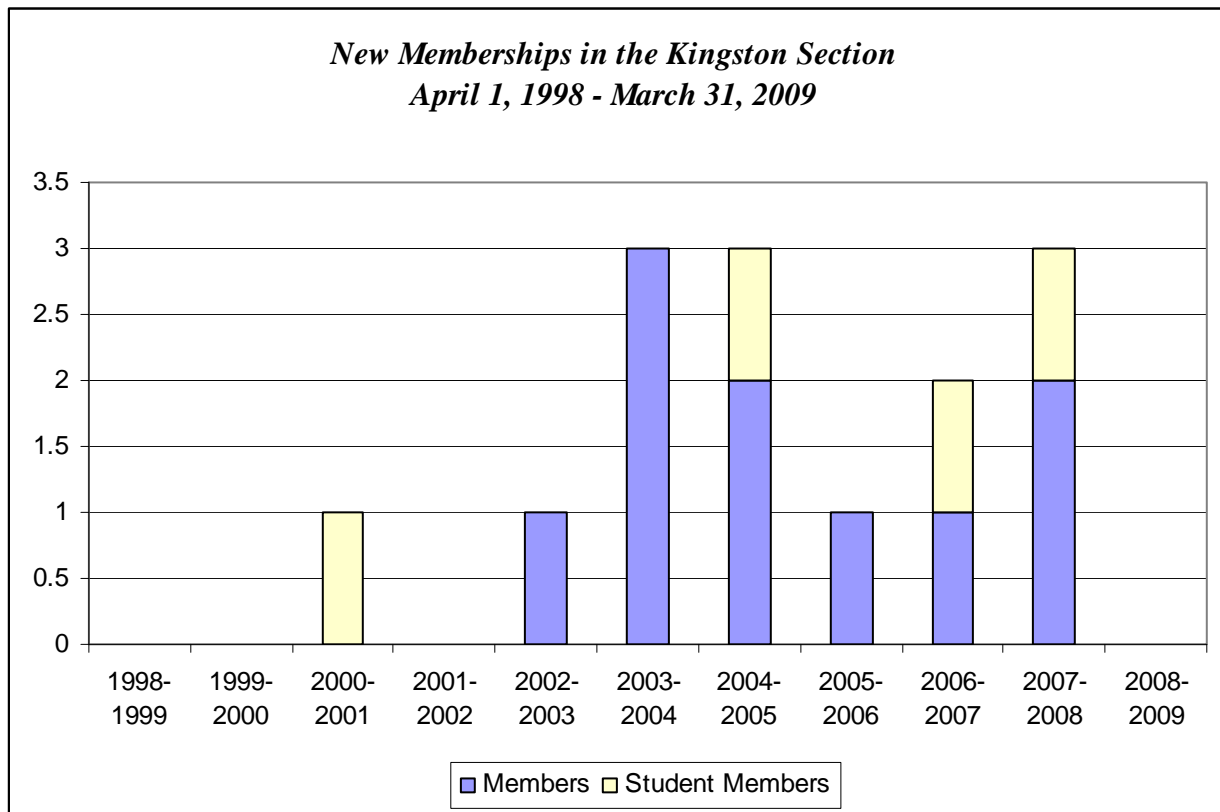
**Membership in the Kingston Section by Member Type
1999-2009**

<i>Member Type</i>	<i>1998-1999</i>	<i>1999-2000</i>	<i>2000-2001</i>	<i>2001-2002</i>	<i>2002-2003</i>	<i>2003-2004</i>	<i>2004-2005</i>	<i>2005-2006</i>	<i>2006-2007</i>	<i>2007-2008</i>	<i>2008-2009</i>
Member	11	11	8	7	7	9	11	11	11	13	9
Retired Member	2	2	2	2	3	2	1	1	1	1	0
Student Member	0	0	1	1	0	1	2	2	2	2	1
Emeritus Member	0	0	0	0	0	0	1	1	1	1	1
Total	13	13	11	10	10	12	15	15	15	17	11



*New Memberships in the Kingston Section by Member Type
April 1998 – March 2009*

<i>Member Type</i>	<i>1998-1999</i>	<i>1999-2000</i>	<i>2000-2001</i>	<i>2001-2002</i>	<i>2002-2003</i>	<i>2003-2004</i>	<i>2004-2005</i>	<i>2005-2006</i>	<i>2006-2007</i>	<i>2007-2008</i>	<i>2008-2009</i>
Member	0	0	0	0	1	3	2	1	1	2	0
Retired Member	0	0	0	0	0	0	0	0	0	0	0
Student Member	0	0	1	0	0	0	1	0	1	1	0
Total	0	0	1	0	1	3	3	1	2	3	0



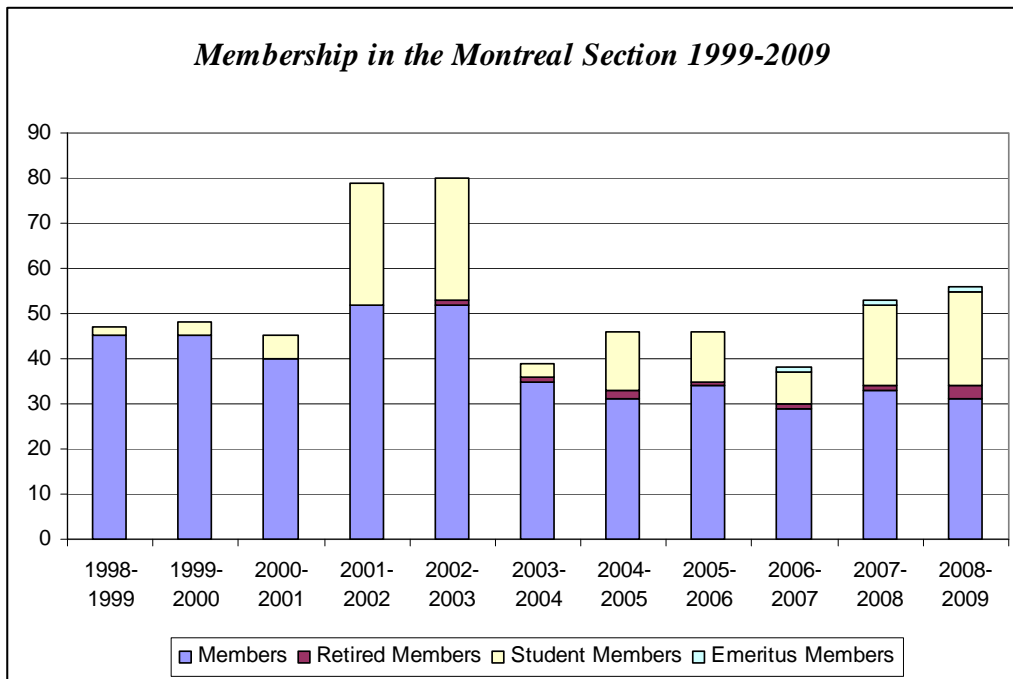
*Discontinued Memberships in the Kingston Section by Member Type
April 2002 – March 2008*

<i>Member Type</i>	<i>2002-2003</i>	<i>2003-2004</i>	<i>2004-2005</i>	<i>2005-2006</i>	<i>2006-2007</i>	<i>2007-2008</i>	<i>2008-2009</i>
Member	1	2	0	2	1	1	4
Retired Member	0	0	1	0	1	0	1
Student Member	1	0	0	0	1	1	2
Total	2	2	1	2	3	2	7

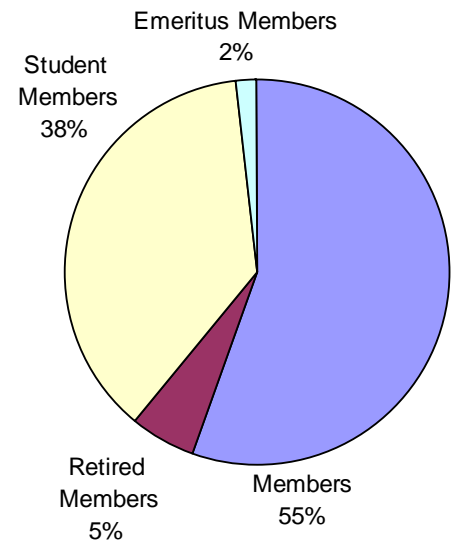
The Montreal section continues to regain ground and reclaim its status as one of the larger, more vital sections of the Society. Membership levels continue to grow, most notably in the Retired and Student member categories. The section would benefit from efforts to retain Members who joined as a result of their involvement in co-hosting CORS/Optimization Days 2008 with the Quebec section and to recruit former Members to rejoin CORS.

**Membership in the Montreal Section by Member Type
1999-2009**

<i>Member Type</i>	<i>1998-1999</i>	<i>1999-2000</i>	<i>2000-2001</i>	<i>2001-2002</i>	<i>2002-2003</i>	<i>2003-2004</i>	<i>2004-2005</i>	<i>2005-2006</i>	<i>2006-2007</i>	<i>2007-2008</i>	<i>2008-2009</i>
Member	45	45	40	52	52	35	31	34	29	33	31
Retired Member	0	0	0	0	1	1	2	1	1	1	3
Student Member	2	3	5	27	27	3	13	11	7	18	21
Emeritus Member									1	1	1
Total	47	48	45	79	80	39	46	46	38	53	56

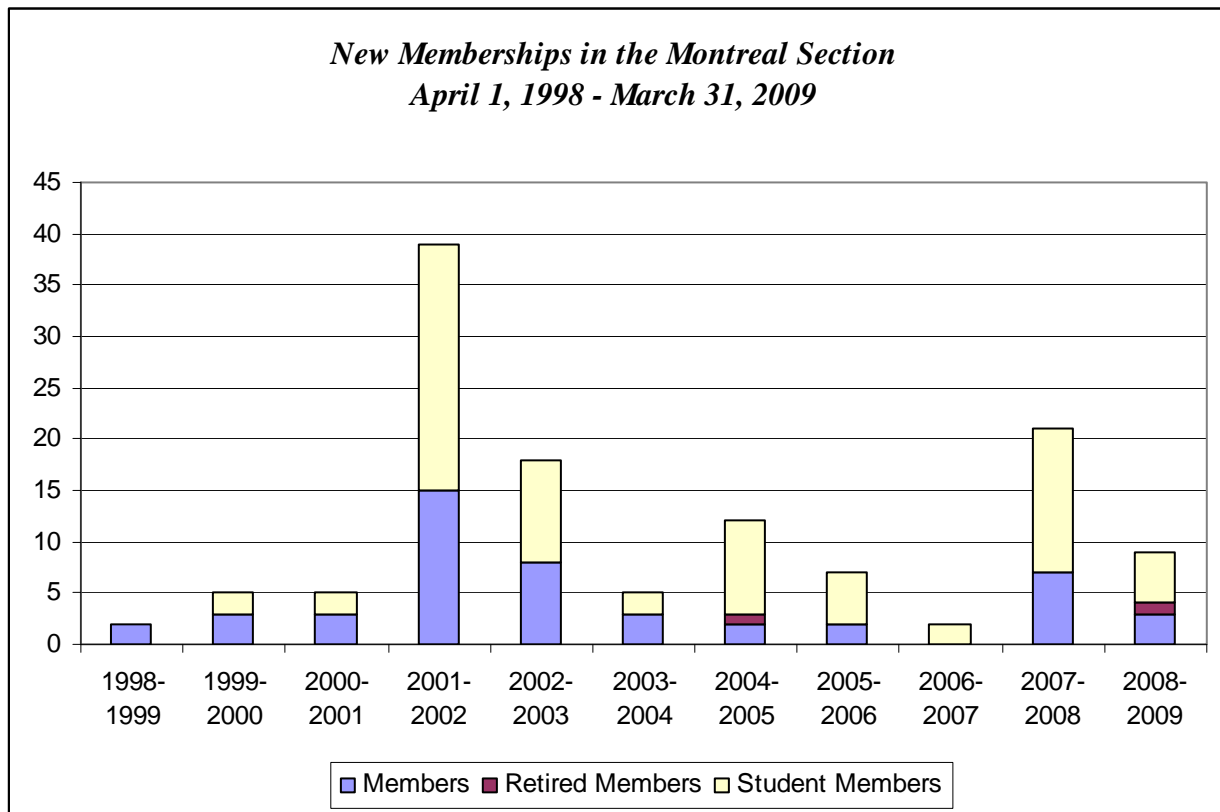


Percentage Distribution of Montreal Section Membership 2009



*New Memberships in the Montreal Section by Member Type
April 1998 – March 2009*

<i>Member Type</i>	<i>1998-1999</i>	<i>1999-2000</i>	<i>2000-2001</i>	<i>2001-2002</i>	<i>2002-2003</i>	<i>2003-2004</i>	<i>2004-2005</i>	<i>2005-2006</i>	<i>2006-2007</i>	<i>2007-2008</i>	<i>2008-2009</i>
Member	2	3	3	15	8	3	2	2	0	7	3
Retired Member	0	0	0	0	0	0	1	0	0	0	1
Student Member	0	2	2	24	10	2	9	5	2	14	5
Total	2	5	5	39	18	5	12	7	2	21	9



*Discontinued Memberships in the Montreal Section by Member Type
April 2002 – March 2009*

<i>Member Type</i>	<i>2002-2003</i>	<i>2003-2004</i>	<i>2004-2005</i>	<i>2005-2006</i>	<i>2006-2007</i>	<i>2007-2008</i>	<i>2008-2009</i>
Member	7	22	6	0	7	4	5
Retired Member	0	0	0	1	0	0	0
Student Member	10	18	1	7	3	4	2
Total	17	40	7	8	10	8	7

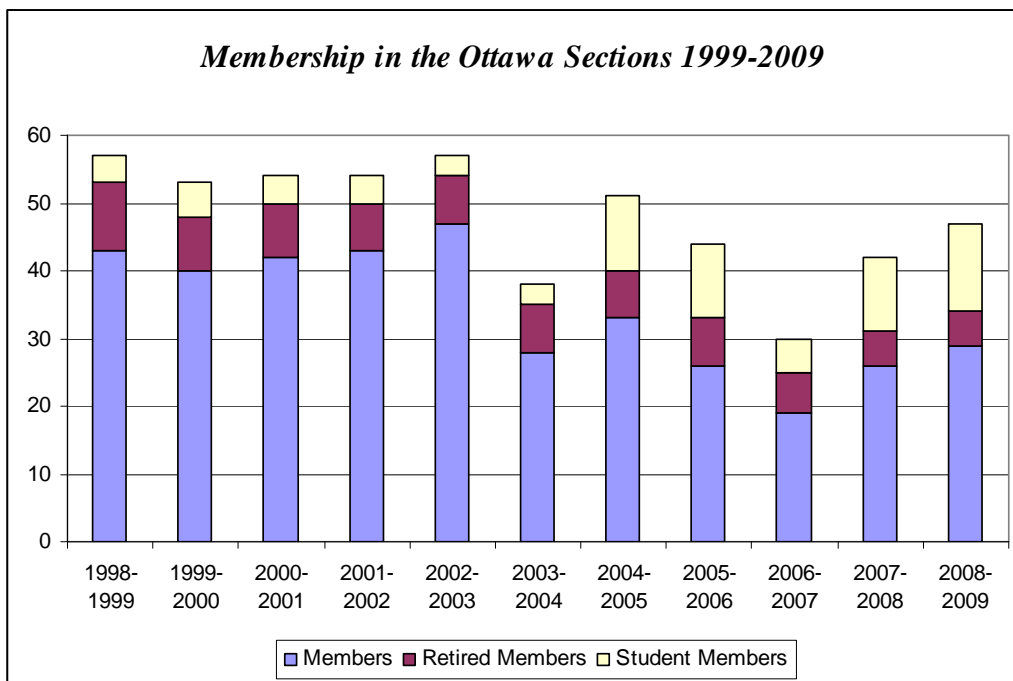
Membership Statistics by Section

Ottawa and Ottawa Student Sections

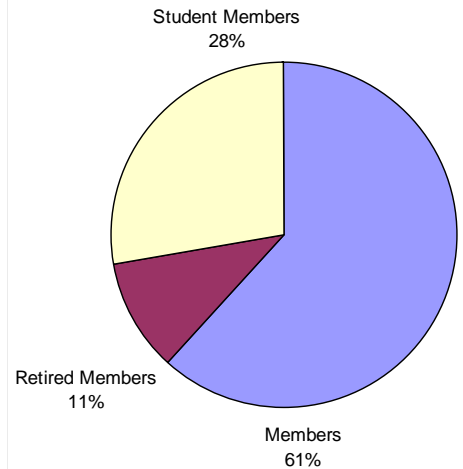
Membership in the Ottawa section (47) continues to rebound from a low of 30 in 2007. The section grew by a total of 5 memberships – 3 Member and 2 Student. Student memberships are at their highest levels in ten years. A rejuvenation of the section is underway with a return to regular section meetings and seminars.

**Membership in the Ottawa Sections by Member Type
1999-2009**

<i>Member Type</i>	<i>1998-1999</i>	<i>1999-2000</i>	<i>2000-2001</i>	<i>2001-2002</i>	<i>2002-2003</i>	<i>2003-2004</i>	<i>2004-2005</i>	<i>2005-2006</i>	<i>2006-2007</i>	<i>2007-2008</i>	<i>2008-2009</i>
Member	43	40	42	43	47	28	33	26	19	26	29
Retired Member	10	8	8	7	7	7	7	7	6	5	5
Student Member	4	5	4	4	3	3	11	11	5	11	13
Total	57	53	54	54	57	38	51	44	30	42	47

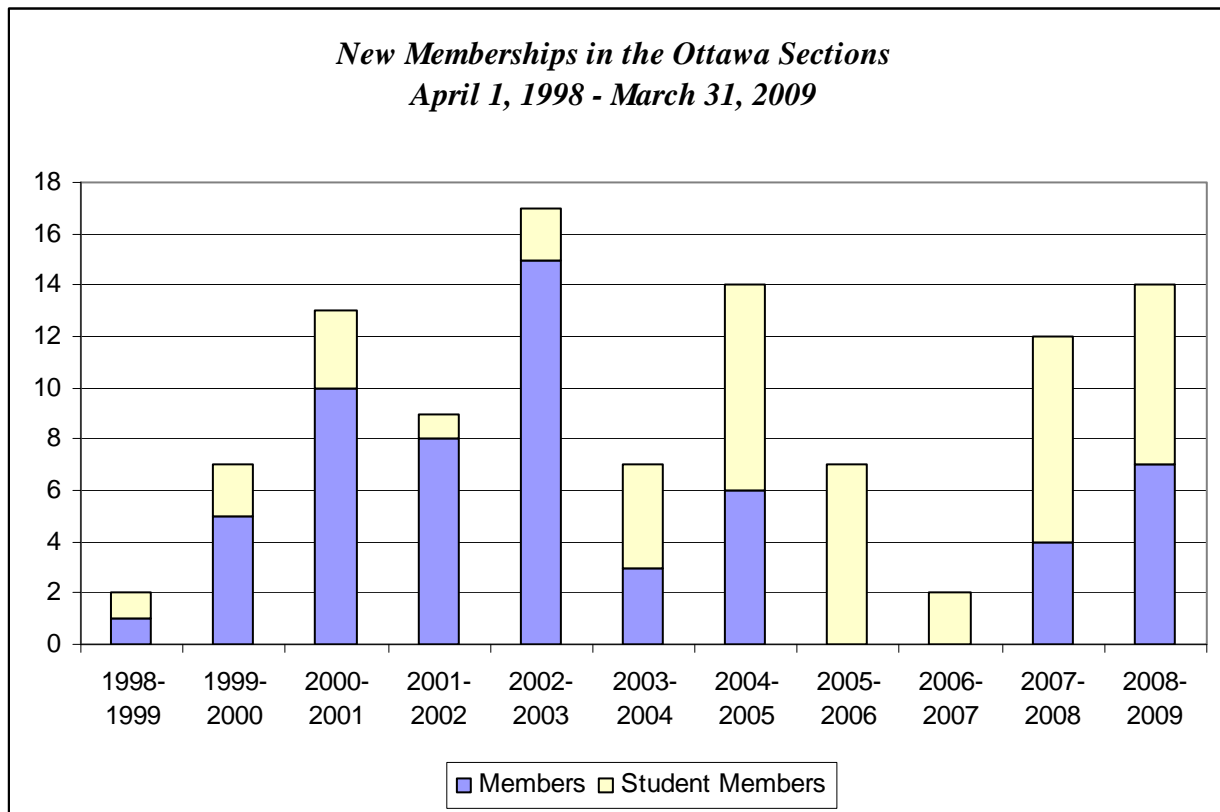


**Percentage Distribution
of Ottawa Sections
Membership 2009**



*New Memberships in the Ottawa Sections by Member Type
April 1998 – March 2009*

<i>Member Type</i>	<i>1998-1999</i>	<i>1999-2000</i>	<i>2000-2001</i>	<i>2001-2002</i>	<i>2002-2003</i>	<i>2003-2004</i>	<i>2004-2005</i>	<i>2005-2006</i>	<i>2006-2007</i>	<i>2007-2008</i>	<i>2008-2009</i>
Member	1	5	10	8	15	3	6	0	0	4	7
Retired Member	0	0	0	0	0	0	0	0	0	0	0
Student Member	1	2	3	1	2	4	8	7	2	8	7
Total	2	7	13	9	17	7	14	7	2	12	14



*Discontinued Memberships in the Ottawa Sections by Member Type
April 2002 – March 2009*

<i>Member Type</i>	<i>2002-2003</i>	<i>2003-2004</i>	<i>2004-2005</i>	<i>2005-2006</i>	<i>2006-2007</i>	<i>2007-2008</i>	<i>2008-2009</i>
Member	11	20	3	7	5	2	3
Retired Member	0	0	0	1	1	1	0
Student Member	3	2	0	8	8	2	6
Total	11	20	3	7	14	5	9

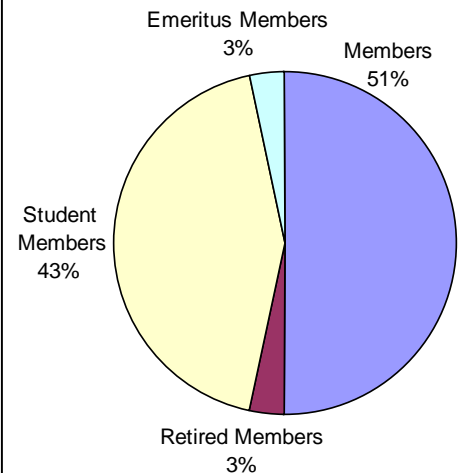
While growing in terms of total membership by 4 over the past year, the total number of Members in the Quebec section is at its lowest level in ten years. An increase in Student members has accounted for the growth in this section over the past two years. The CORS Diploma appears to be an incentive to attracting Student Members to join this section as witnessed by the increase in the number of diplomas issued to students attending the Université Laval.

**Membership in the Quebec Section by Member Type
1999-2009**

<i>Member Type</i>	<i>1998-1999</i>	<i>1999-2000</i>	<i>2000-2001</i>	<i>2001-2002</i>	<i>2002-2003</i>	<i>2003-2004</i>	<i>2004-2005</i>	<i>2005-2006</i>	<i>2006-2007</i>	<i>2007-2008</i>	<i>2008-2009</i>
Member	22	22	22	32	32	20	20	19	19	16	15
Retired Member	0	0	0	0	1	2	1	1	1	1	1
Student Member	7	9	6	17	8	2	4	3	3	8	13
Emeritus Member							1	1	1	1	1
Total	29	31	28	49	41	24	26	24	24	26	30

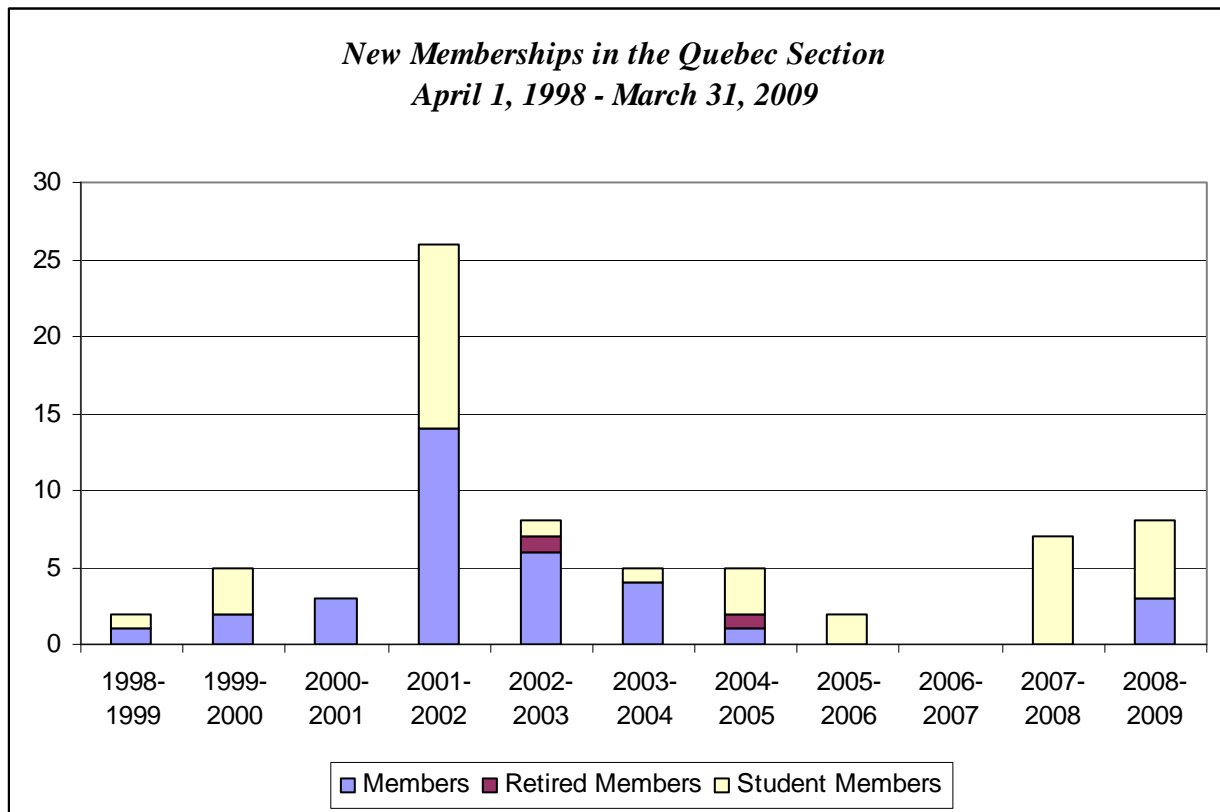


**Percentage Distribution
of Quebec Section
Membership 2009**



*New Memberships in the Quebec Section by Member Type
April 1998 – March 2009*

<i>Member Type</i>	<i>1998-1999</i>	<i>1999-2000</i>	<i>2000-2001</i>	<i>2001-2002</i>	<i>2002-2003</i>	<i>2003-2004</i>	<i>2004-2005</i>	<i>2005-2006</i>	<i>2006-2007</i>	<i>2007-2008</i>	<i>2008-2009</i>
Member	1	2	3	14	6	4	1	0	0	0	3
Retired Member	0	0	0	0	1	0	1	0	0	0	0
Student Member	1	3	0	12	1	1	3	2	0	7	5
Total	2	5	3	26	8	5	5	2	0	7	8



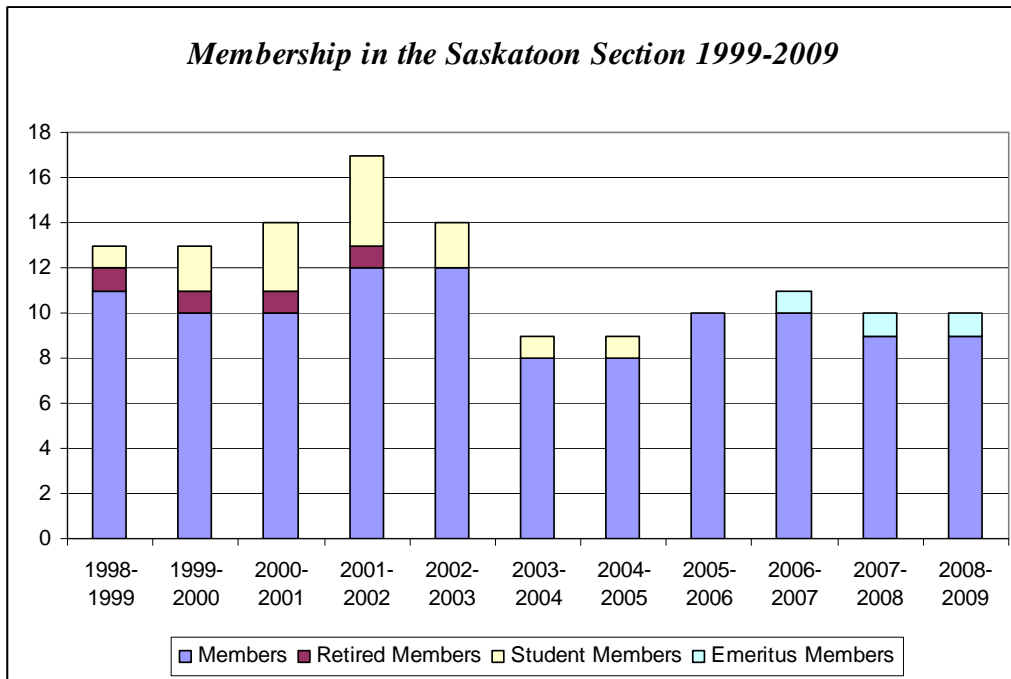
*Discontinued Memberships in the Quebec Section by Member Type
April 2002 – March 2009*

<i>Member Type</i>	<i>2002-2003</i>	<i>2003-2004</i>	<i>2004-2005</i>	<i>2005-2006</i>	<i>2006-2007</i>	<i>2007-2008</i>	<i>2008-2009</i>
Member	7	14	3	2	0	2	4
Retired Member	0	0	0	0	0	0	0
Student Member	7	7	0	2	0	2	1
Total	14	21	3	4	0	4	5

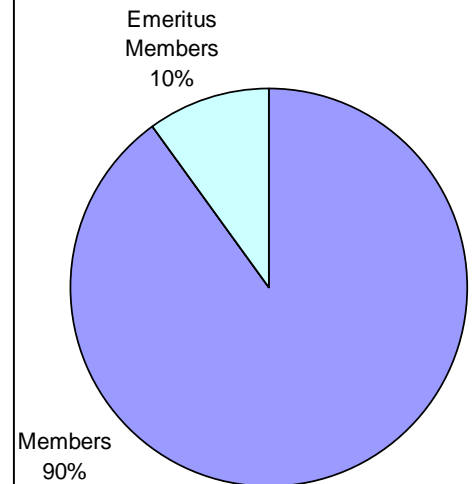
Membership in the Saskatoon section remains unchanged over the past year at 10. For the fourth consecutive year, the section has no Student Members. No Diplomas have been issued to students at the University of Saskatchewan since 2002 and there is currently no Diploma Coordinator at the institution.

**Membership in the Saskatoon Section by Member Type
1999-2009**

<i>Member Type</i>	<i>1998-1999</i>	<i>1999-2000</i>	<i>2000-2001</i>	<i>2001-2002</i>	<i>2002-2003</i>	<i>2003-2004</i>	<i>2004-2005</i>	<i>2005-2006</i>	<i>2006-2007</i>	<i>2007-2008</i>	<i>2008-2009</i>
Member	11	10	10	12	12	8	8	10	10	9	9
Retired Member	1	1	1	1	0	0	0	0	0	0	0
Student Member	1	2	3	4	2	1	1	0	0	0	0
Emeritus Member									1	1	1
Total	13	13	14	17	14	9	9	10	11	10	10

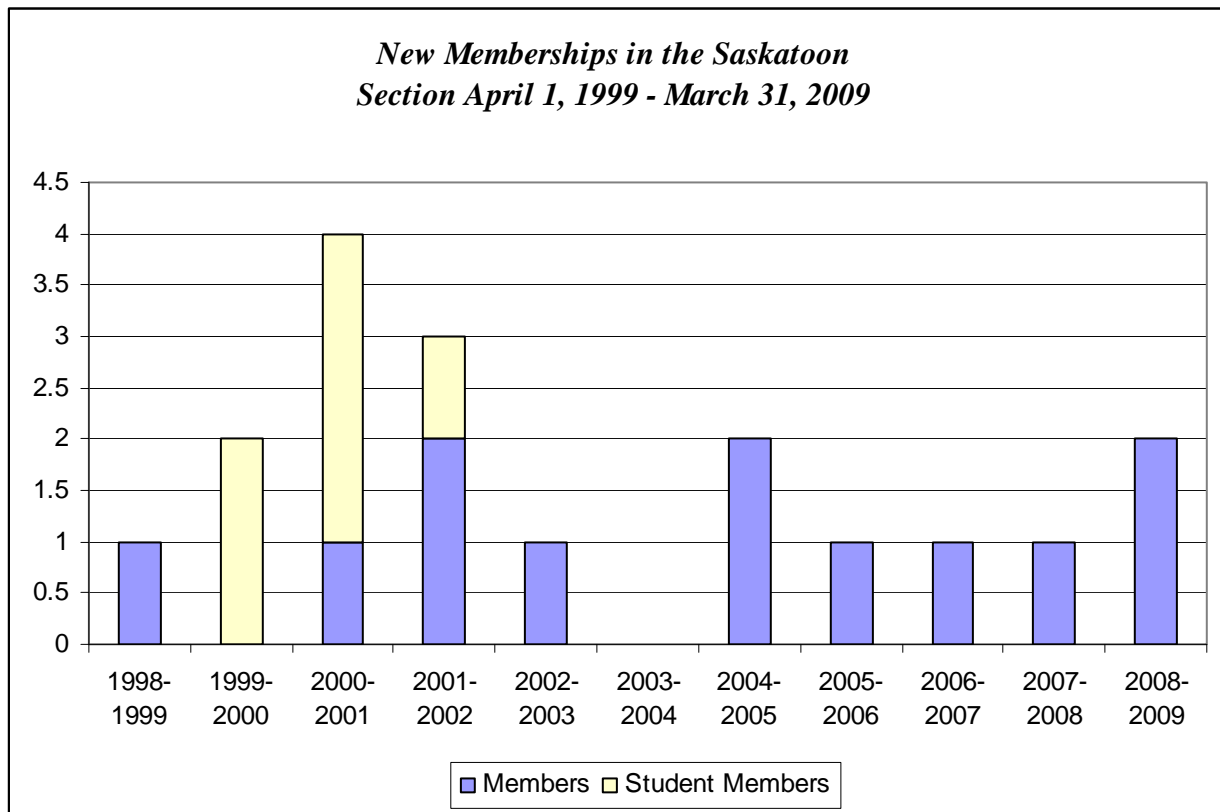


**Percentage Distribution
of Saskatoon Section
Membership 2009**



*New Memberships in the Saskatoon Section by Member Type
April 1998 – March 2009*

<i>Member Type</i>	<i>1998-1999</i>	<i>1999-2000</i>	<i>2000-2001</i>	<i>2001-2002</i>	<i>2002-2003</i>	<i>2003-2004</i>	<i>2004-2005</i>	<i>2005-2006</i>	<i>2006-2007</i>	<i>2007-2008</i>	<i>2008-2009</i>
Member	1	0	1	2	1	0	2	1	1	1	2
Retired Member	0	0	0	0	0	0	0	0	0	0	0
Student Member	0	2	3	1	0	0	0	0	0	0	0
Total	1	2	4	3	1	0	2	1	1	1	2



*Discontinued Memberships in the Saskatoon Section by Member Type
April 2002 – March 2008*

<i>Member Type</i>	<i>2002-2003</i>	<i>2003-2004</i>	<i>2004-2005</i>	<i>2005-2006</i>	<i>2006-2007</i>	<i>2007-2008</i>	<i>2008-2009</i>
Member	1	4	1	0	1	2	1
Retired Member	1	0	0	0	0	0	0
Student Member	2	1	0	0	0	0	0
Total	4	5	1	0	1	2	1

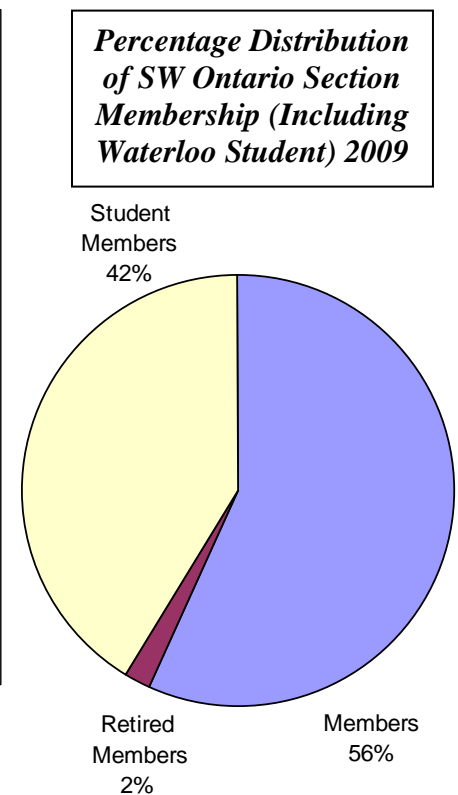
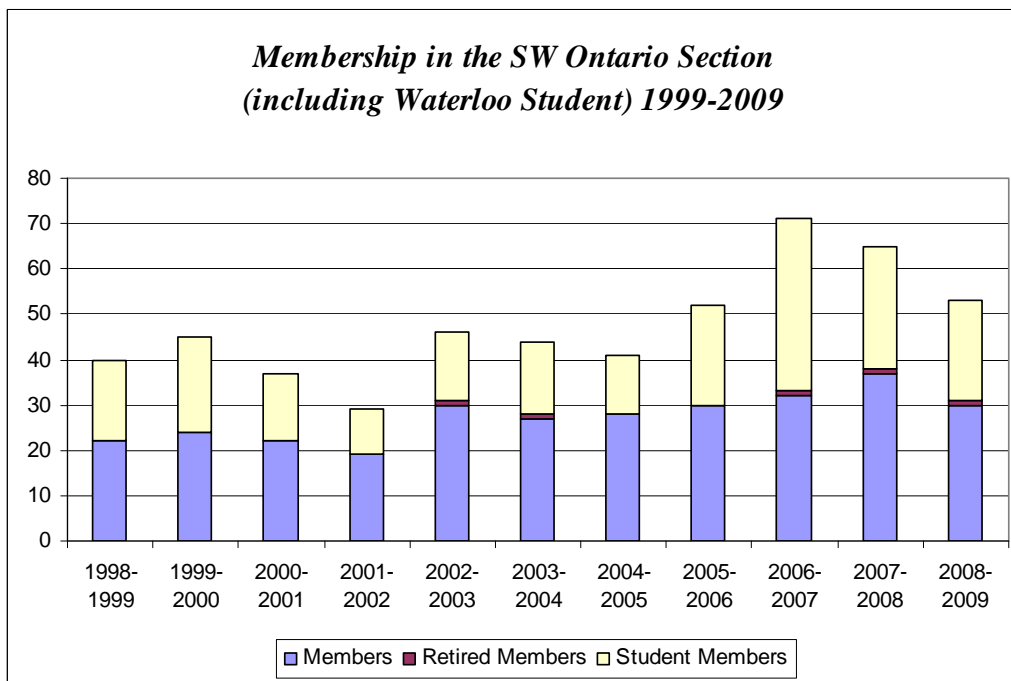
Membership Statistics by Section

SW Ontario (including Waterloo Student) Section

Over the past year, this section has experienced an 18% decrease in membership with most of the memberships gained with the hosting of CORS 2007 not being retained. Over 90% of the Student members are associated with the Waterloo Student section with only 2 Students at other institutions within the section (UWO and Windsor). This is a reversal from only a few years ago when Waterloo Students accounted for less than a quarter of the Students in the SW Ontario section.

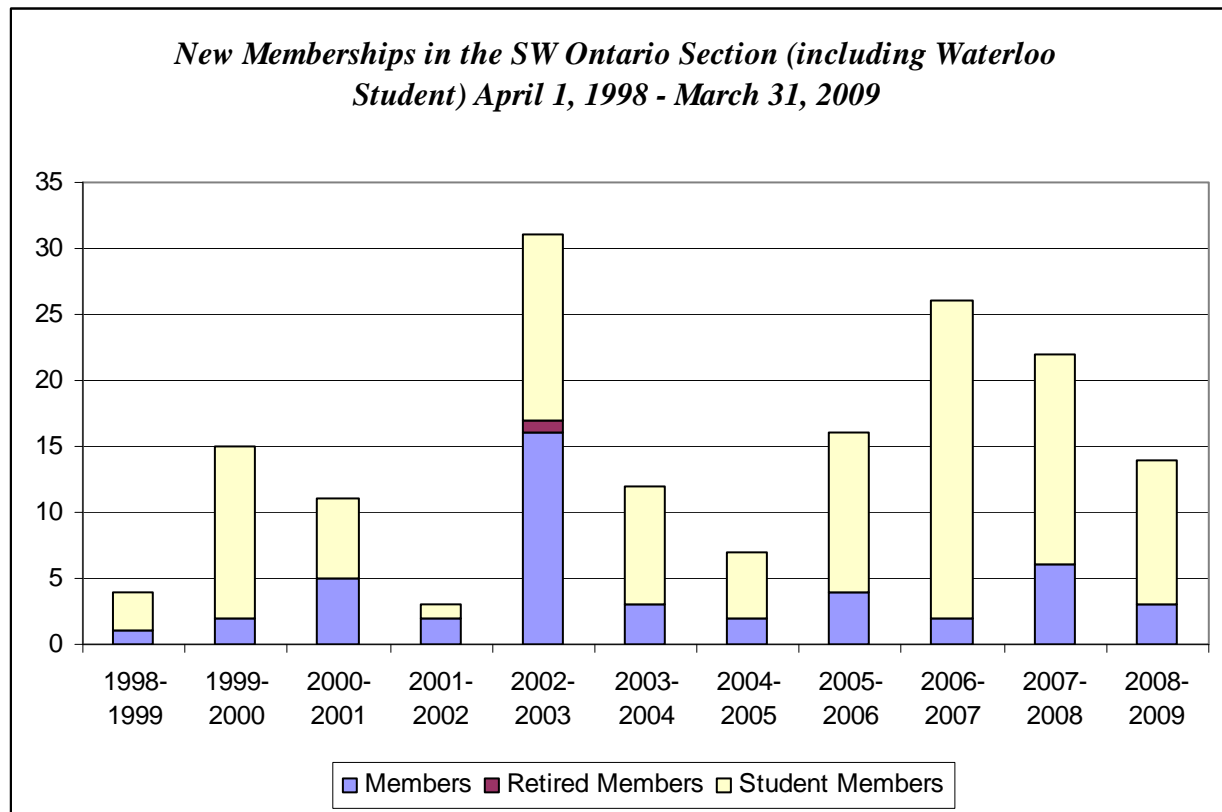
**Membership in the SW Ontario Section (Including Waterloo Student) by Member Type
1999-2009**

<i>Member Type</i>	<i>1998-1999</i>	<i>1999-2000</i>	<i>2000-2001</i>	<i>2001-2002</i>	<i>2002-2003</i>	<i>2003-2004</i>	<i>2004-2005</i>	<i>2005-2006</i>	<i>2006-2007</i>	<i>2007-2008</i>	<i>2008-2009</i>
Member	22	24	22	19	30	27	28	30	32	37	30
Retired Member	0	0	0	0	1	1	0	0	1	1	1
Student Member	18	21	15	10	15	16	13	22	38	27	22
Total	40	45	37	29	46	44	41	52	71	65	53



***New Memberships in the SW Ontario Section (Including Waterloo Student) by Member Type
April 1998 – March 2009***

<i>Member Type</i>	<i>1998-1999</i>	<i>1999-2000</i>	<i>2000-2001</i>	<i>2001-2002</i>	<i>2002-2003</i>	<i>2003-2004</i>	<i>2004-2005</i>	<i>2005-2006</i>	<i>2006-2007</i>	<i>2007-2008</i>	<i>2008-2009</i>
Member	1	2	5	2	16	3	2	4	2	6	3
Retired Member	0	0	0	0	1	0	0	0	0	0	0
Student Member	3	13	6	1	14	9	5	12	25	16	11
Total	4	15	11	3	31	12	7	16	27	32	14



***Discontinued Memberships in the SW Ontario Section (Including Waterloo Student) by Member Type
April 2002 – March 2009***

<i>Member Type</i>	<i>2002-2003</i>	<i>2003-2004</i>	<i>2004-2005</i>	<i>2005-2006</i>	<i>2006-2007</i>	<i>2007-2008</i>	<i>2008-2009</i>
Member	2	1	2	5	1	4	10
Retired Member	0	0	0	0	0	0	0
Student Member	4	3	13	6	7	27	10
Total	6	4	15	11	8	31	20

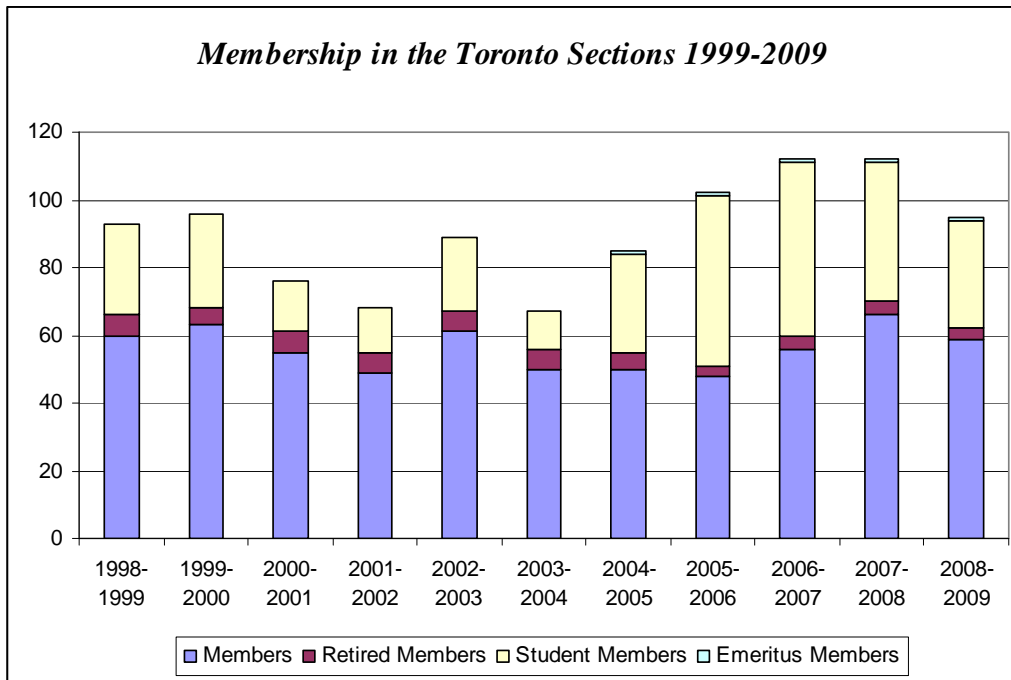
Membership Statistics by Section

Toronto and Toronto Student Sections

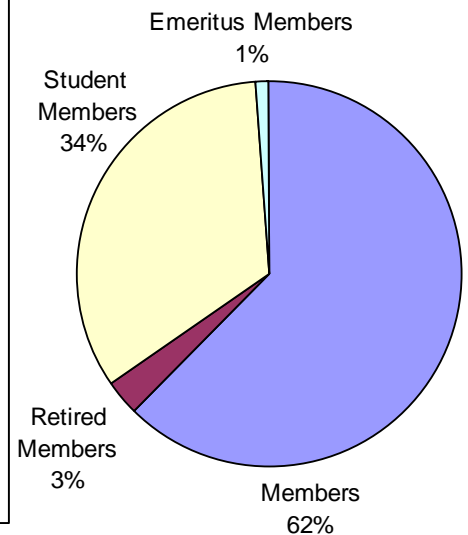
The Society's largest Section experienced a decrease in membership of 17 but overall remains vital with a total membership of 95. Efforts should be made to stem the decline in the number of Student members which has declined by 40% since 2006. While new Members continue to join the section (10) a greater number are deciding not to retain their memberships.

**Membership in the Toronto Sections by Member Type
1999-2009**

<i>Member Type</i>	<i>1998-1999</i>	<i>1999-2000</i>	<i>2000-2001</i>	<i>2001-2002</i>	<i>2002-2003</i>	<i>2003-2004</i>	<i>2004-2005</i>	<i>2005-2006</i>	<i>2006-2007</i>	<i>2007-2008</i>	<i>2008-2009</i>
Member	60	63	55	49	61	50	50	48	56	66	59
Retired Member	6	5	6	6	6	6	5	3	4	4	3
Student Member	27	28	15	13	22	11	29	50	51	41	32
Emeritus Member							1	1	1	1	1
Total	93	96	76	68	88	67	85	102	112	112	95

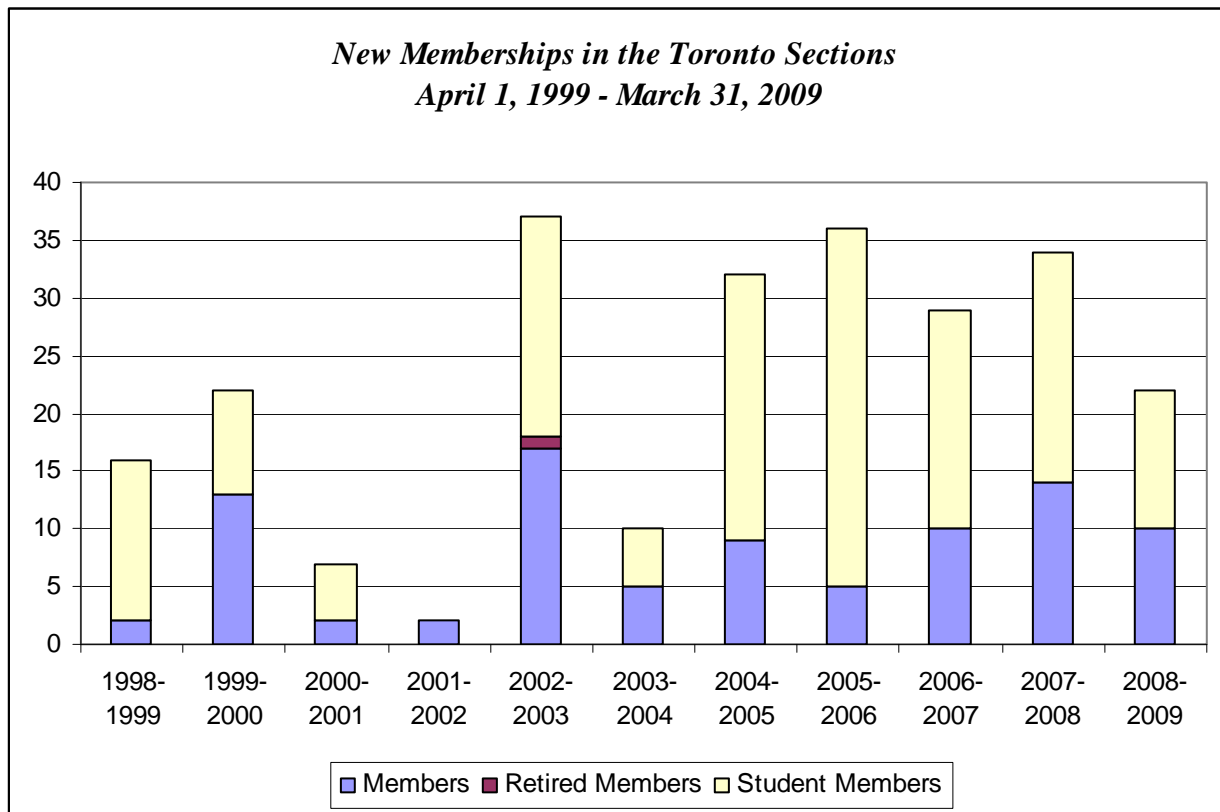


**Percentage Distribution
of Toronto Sections
Membership 2009**



*New Memberships in the Toronto Sections by Member Type
April 1998 – March 2009*

<i>Member Type</i>	<i>1998-1999</i>	<i>1999-2000</i>	<i>2000-2001</i>	<i>2001-2002</i>	<i>2002-2003</i>	<i>2003-2004</i>	<i>2004-2005</i>	<i>2005-2006</i>	<i>2006-2007</i>	<i>2007-2008</i>	<i>2008-2009</i>
Member	2	13	2	2	17	5	9	5	10	14	10
Retired Member	0	0	0	0	1	0	0	0	0	0	0
Student Member	14	9	5	0	19	5	23	31	19	20	12
Total	16	22	7	2	37	10	32	36	29	34	22



*Discontinued Memberships in the Toronto Sections by Member Type
April 2002 – March 2008*

<i>Member Type</i>	<i>2002-2003</i>	<i>2003-2004</i>	<i>2004-2005</i>	<i>2005-2006</i>	<i>2006-2007</i>	<i>2007-2008</i>	<i>2008-2009</i>
Member	10	21	6	8	8	10	15
Retired Member	1	0	1	2	0	0	1
Student Member	12	16	7	14	16	28	19
Total	22	37	14	24	24	38	35

Membership Statistics by Section

Vancouver and Vancouver Student Sections

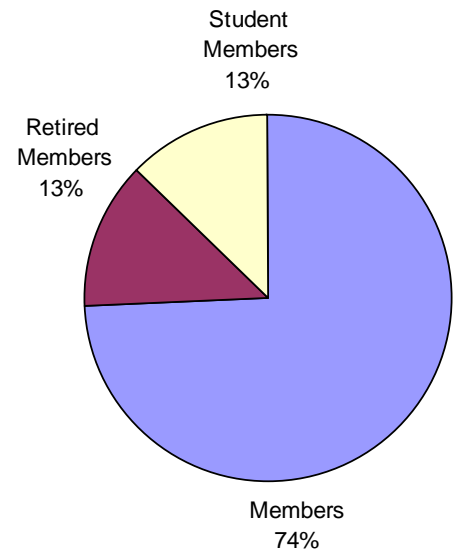
Last year, the Vancouver section experienced a decrease in membership of 4 Members reducing its total number of members to its lowest level in ten years. The number of Student members over the past few years has not warranted a Vancouver Student section and so it has officially amalgamated into the Vancouver section.

**Membership in the Vancouver Sections by Member Type
1999-2009**

<i>Member Type</i>	<i>1998-1999</i>	<i>1999-2000</i>	<i>2000-2001</i>	<i>2001-2002</i>	<i>2002-2003</i>	<i>2003-2004</i>	<i>2004-2005</i>	<i>2005-2006</i>	<i>2006-2007</i>	<i>2007-2008</i>	<i>2008-2009</i>
Member	24	24	27	25	26	21	21	20	23	27	23
Retired Member	1	0	0	0	2	3	4	5	5	4	4
Student Member	7	12	11	10	16	9	10	8	9	4	4
Total	32	36	38	35	44	33	35	33	37	35	31

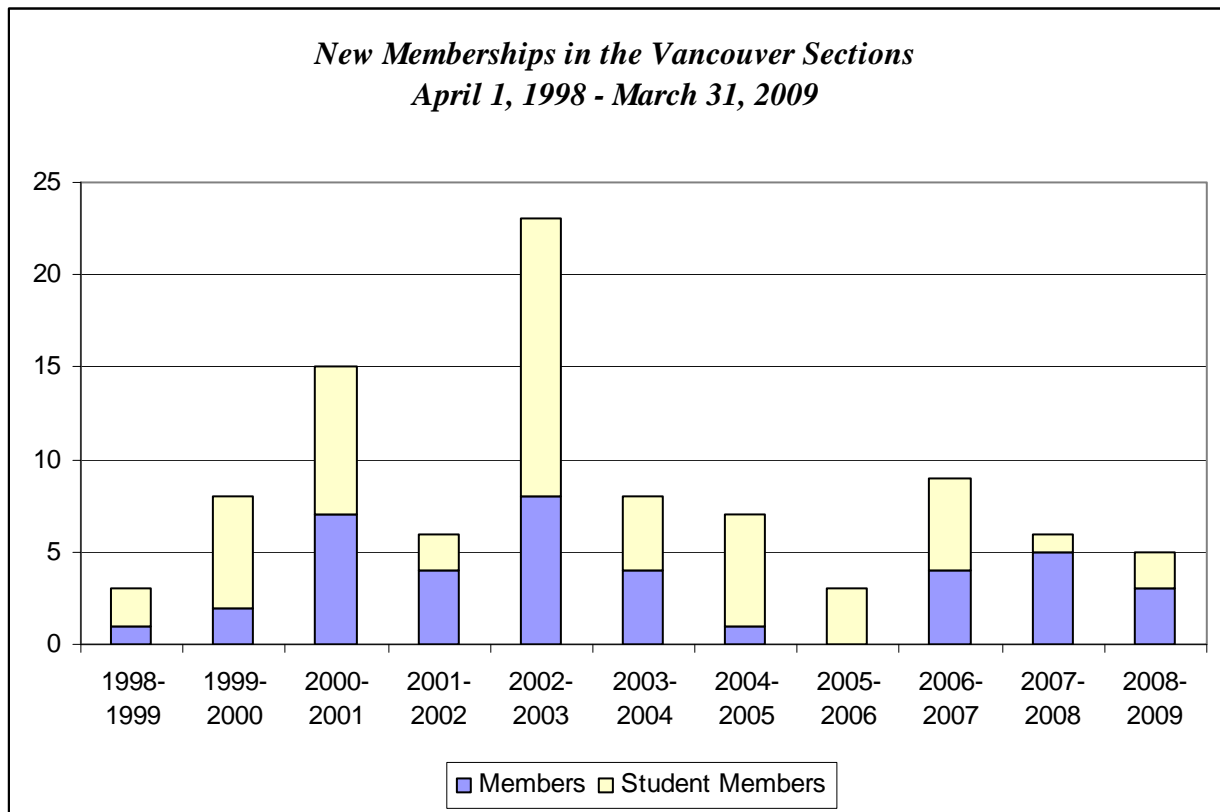


**Percentage Distribution
of Section Membership
2009**



***New Memberships in the Vancouver Sections by Member Type
April 1997 – March 2008***

<i>Member Type</i>	<i>1998-1999</i>	<i>1999-2000</i>	<i>2000-2001</i>	<i>2001-2002</i>	<i>2002-2003</i>	<i>2003-2004</i>	<i>2004-2005</i>	<i>2005-2006</i>	<i>2006-2007</i>	<i>2007-2008</i>	<i>2008-2009</i>
Member	1	2	7	4	8	4	1	0	4	5	3
Retired Member	0	0	0	0	0	0	0	0	0	0	0
Student Member	2	6	8	2	15	4	6	3	5	1	2
Total	3	8	15	6	23	8	7	3	9	6	5



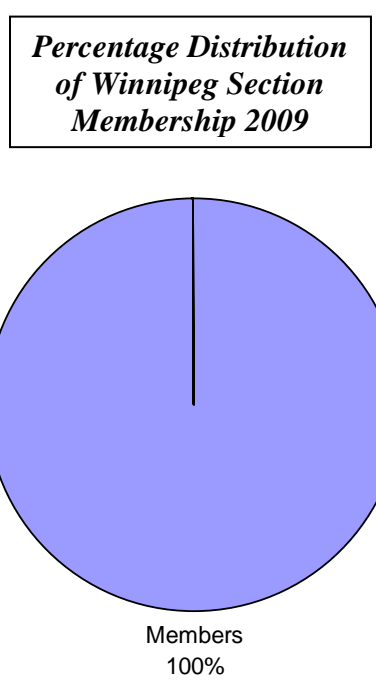
***Discontinued Memberships in the Vancouver Sections by Member Type
April 2002 – March 2009***

<i>Member Type</i>	<i>2002-2003</i>	<i>2003-2004</i>	<i>2004-2005</i>	<i>2005-2006</i>	<i>2006-2007</i>	<i>2007-2008</i>	<i>2008-2009</i>
Member	6	10	2	2	4	3	7
Retired Member	0	0	0	0	2	2	0
Student Member	9	10	4	4	5	4	6
Total	15	20	6	6	11	9	13

Although membership in the Winnipeg section increased for the first time in three years last year, it remains the smallest section in the Society with only three Members. Its membership has never exceeded 6. It has not had any Student Members for the past five years.

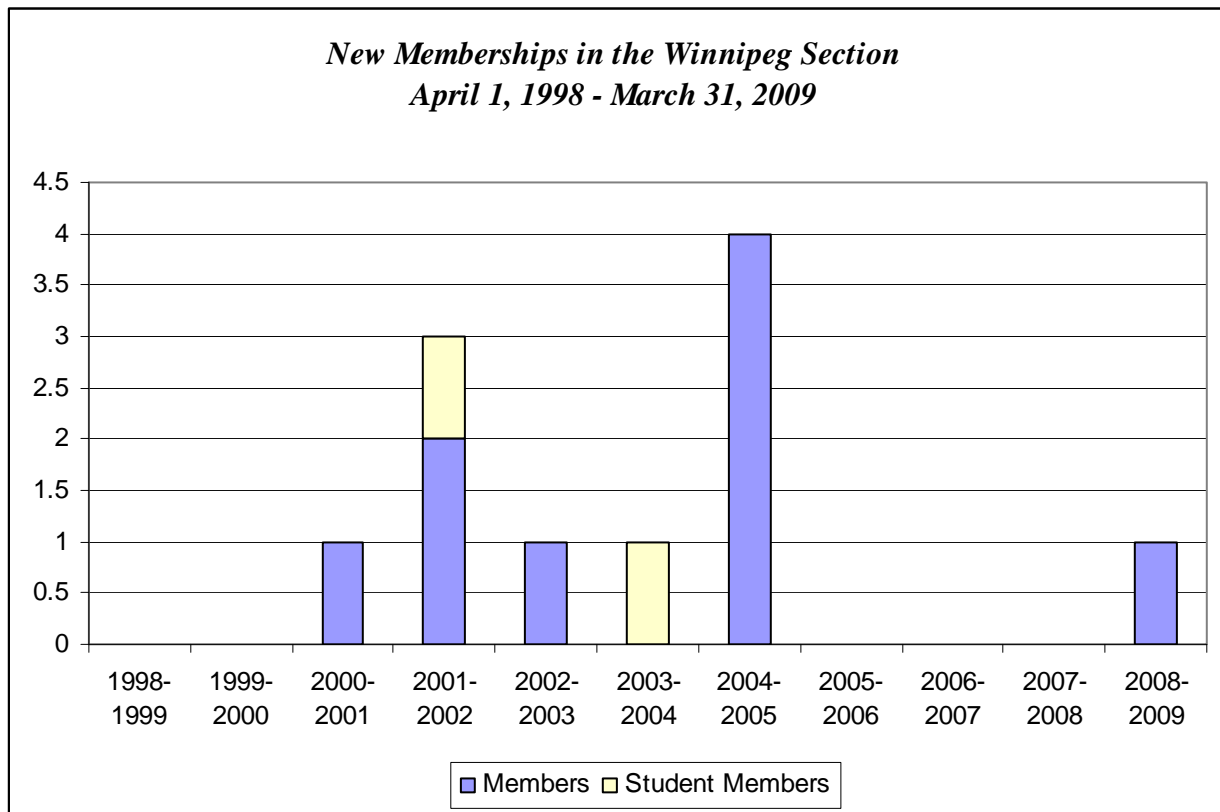
**Membership in the Winnipeg Section by Member Type
1999-2009**

<i>Member Type</i>	<i>1998-1999</i>	<i>1999-2000</i>	<i>2000-2001</i>	<i>2001-2002</i>	<i>2002-2003</i>	<i>2003-2004</i>	<i>2004-2005</i>	<i>2005-2006</i>	<i>2006-2007</i>	<i>2007-2008</i>	<i>2008-2009</i>
Member	4	3	5	5	4	3	5	3	2	2	3
Retired Member	0	0	0	0	0	0	0	0	0	0	0
Student Member	0	0	1	1	0	1	0	0	0	0	0
Total	4	3	6	6	4	4	5	3	2	2	3



*New Memberships in the Winnipeg Section by Member Type
April 1998 – March 2009*

<i>Member Type</i>	<i>1998-1999</i>	<i>1999-2000</i>	<i>2000-2001</i>	<i>2001-2002</i>	<i>2002-2003</i>	<i>2003-2004</i>	<i>2004-2005</i>	<i>2005-2006</i>	<i>2006-2007</i>	<i>2007-2008</i>	<i>2008-2009</i>
Member	0	0	1	2	1	0	4	0	0	0	1
Retired Member	0	0	0	0	0	0	0	0	0	0	0
Student Member	0	0	0	1	0	1	0	0	0	0	0
Total	0	0	1	3	1	1	4	0	0	0	1



*Discontinued Memberships in the Winnipeg Section by Member Type
April 2002 – March 2009*

<i>Member Type</i>	<i>2002-2003</i>	<i>2003-2004</i>	<i>2004-2005</i>	<i>2005-2006</i>	<i>2006-2007</i>	<i>2007-2008</i>	<i>2008-2009</i>
Member	1	1	2	1	1	0	0
Retired Member	0	0	0	0	0	0	0
Student Member	0	0	1	0	0	0	0
Total	1	1	3	1	1	0	0